

# **Manual for RIP Printing (ONYX RIP)**

---

---

## Contents

### **Before Using**

Copyrights and Trademarks. . . . .	3
Screen Appearance. . . . .	3
OS Notation. . . . .	3

### **Introduction**

What to Prepare. . . . .	4
Workflow. . . . .	5

### **Preparations for Printing**

Downloading EMX Files. . . . .	7
Registering the Media Setting Values to the Printer. . . . .	11
Doing Initial Settings for the RIP and Importing Print Information. . . . .	14
For ONYX RIP. . . . .	14
Creating Print Modes Often Used with the RIP. . . . .	21
For ONYX RIP. . . . .	21

### **Print Operations**

For ONYX RIP. . . . .	26
Printing the Print Data While Checking it. . . . .	26
Hot Folder Printing. . . . .	28
Canceling Printing. . . . .	29

### **Troubleshooting**

EMX Files Cannot Be Downloaded on the Dashboard. . . . .	31
Failed to Register the Media Setting Values/Failed to Import Print Information. . . . .	31
The Estimated Print Time Does Not Match (Windows Only). . . . .	33
The Seams between Pages Stand Out. . . . .	35
For ONYX RIP. . . . .	36
Matching the Print Results to the Displayed Color of Print Data. . . . .	37
Checking the Print Results with a Wide Color Gamut Profile in Advance on the Screen. . . . .	38
Matching Your Print Results to the Display Colors in the Image Processing Software. . . . .	39
Matching the Colors to Color Swatch Books and Samples. . . . .	42

## Before Using

---

### **Before Using**

## **Copyrights and Trademarks**

EPSON, EPSON EXCEED YOUR VISION, EXCEED YOUR VISION, and their logos are registered trademarks or trademarks of Seiko Epson.

Microsoft® and Windows® are registered trademarks of Microsoft Corporation.

Mac® and Mac OS® are registered trademarks of Apple Inc.

Adobe®, Illustrator®, Photoshop® and Adobe® RGB (1998) are either registered trademarks or trademarks of Adobe Systems Incorporated in the United States and/or other countries.

*General Notice: Other product names used herein are for identification purposes only and may be trademarks of their respective owners. Epson disclaims any and all rights in those marks.*

© 2016 Seiko Epson Corporation. All rights reserved.

## **Screen Appearance**

- The screens in this manual may slightly differ from the actual screens. Also be aware that the screens may differ due to a difference in the OS or the usage environment.
- The software RIP screens that appear in this manual use the following screens, unless otherwise specified.  
When using RIP Queue (Ver. 12) on Windows 7

## **OS Notation**

### **Notation for Windows**

In this manual, "Windows" is used as a generic name for all OS (operating systems) for Microsoft® Windows®.

### **Mac OS Notation**

In this manual, "Mac OS X" is used as a generic name for all OS (operating systems) for Mac OS X.

# Introduction

When using commercial software RIP (hereafter RIP) to print, you must register information about the media you are using to both printers and RIP. How to register and do settings differs, as seen below, according to the required print level.

## For Simple Printing

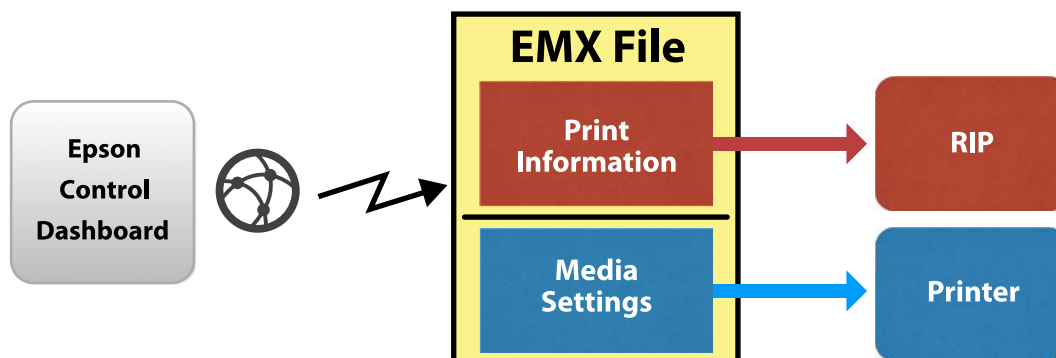
You can easily register basic media information by selecting the media type according to the media you are using in **Easy Media Setup** in the printer's settings menu. Simply setting the media type and the print mode in the RIP allows you to print.

## For the Optimal Printing on the Commercial Media You Are Using

Use the print settings files (hereafter EMX files) that Epson provides to register and do settings. EMX files are batched files that contain the following information, most suitable for the media you are using.

- ❑ Media setting values: Values for media settings (temperature of the heater, platen gap, etc.) that are registered to the printer
- ❑ Print information: Such setting information as resolution and the number of print passes and ICC profiles that are read and used by the RIP

Download and import EMX files with the Epson software, Epson Control Dashboard.



In this manual we explain the basic procedures for RIP printing that uses EMX files. Also see the supplemental manual, *Printing with WH/MS, Matching Specific Colors* (PDF) when printing with the SC-S80600 Series using White/Metallic Silver ink.

## What to Prepare

### Software RIP (Commercially Available)

Use a RIP that can be used with your printer. You can check the latest information about compatible RIP on the Software Available List (<https://bizijdevelopers.ebz.epson.net/rip/list/>).

### Epson Control Dashboard (Dashboard)

Use the Dashboard when importing setting information for the printer or RIP, or when downloading EMX files.

You can install the latest software from the Setup Navi (<http://epson.sn>).

## Introduction

### **Important:**

Install the RIP and Dashboard on a computer that satisfies the following conditions.

- It can connect to the internet. You will not be able to download EMX files if your computer cannot connect to the internet.
- There is enough space to install both the RIP and Dashboard. Separate computers cannot link correctly.

### **Print Data**

We recommend PDF (PDF/X-1a standard or PDF/X-4 equivalent) for the following points.

- Links to images do not break and the layout does not get corrupted.
- Text does not need to be outlined.
- There is no difference in appearance even if the version of the image processing software is different.

See the manual for the image processing software (Adobe Photoshop, Adobe Illustrator, etc.) you are using for how to put print data into PDF format.

## Workflow

These preparations for printing are done when printing on media for the first time or printing on new media. They do not need to be done every day for all print jobs.

\* The procedure may differ depending on the RIP you are using.

### **Preparations for Printing**

**(1) On the Dashboard, download the EMX files for the media on which you are printing.**

 ["Downloading EMX Files" on page 7](#)



**(2) Register the values of the media settings to the printer on the Dashboard.**

 ["Registering the Media Setting Values to the Printer" on page 11](#)



**(3) Load the media for printing in the printer and do Media Adjust.**

Be sure to correctly load the media for printing and do **Media Adjust** in the printer's settings menu.

See *Operator's Guide* (booklet/online manual) for details about the procedure.



**(4) Install the RIP and import print information from the EMX files to the RIP.\***

 ["Doing Initial Settings for the RIP and Importing Print Information" on page 14](#)

## Introduction



**(5) Create a print mode that is often used with the RIP.\***

 ["Creating Print Modes Often Used with the RIP" on page 21](#)

### Print Jobs

If you are printing as a continuation of the preparations for printing, you do not need to do step (1).

**(1) Load media in the printer and select the media setting number.**

Correctly load the media and select the media setting number that has been registered to the printer.

See *Operator's Guide* (booklet/online manual) for details about the procedure.



**(2) Read the print data to the RIP, and then print it.\***

 ["Print Operations" on page 26](#)

---

# Preparations for Printing

---

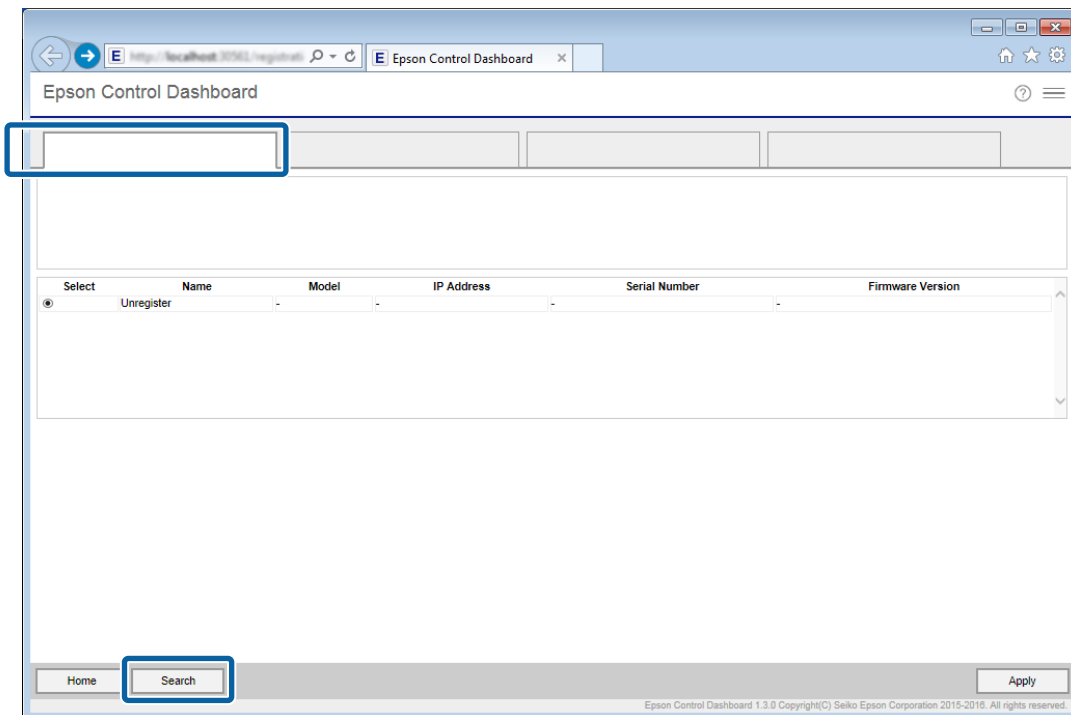
## Downloading EMX Files

In this section we explain the procedures for downloading the EMX files for the print media with the Dashboard.

EMX files differ for each model, even when they are for the same media. If you are using multiple printer models, download the EMX files that are specific to each model.


If you have finished registering your printer on the Dashboard, start from step 3.

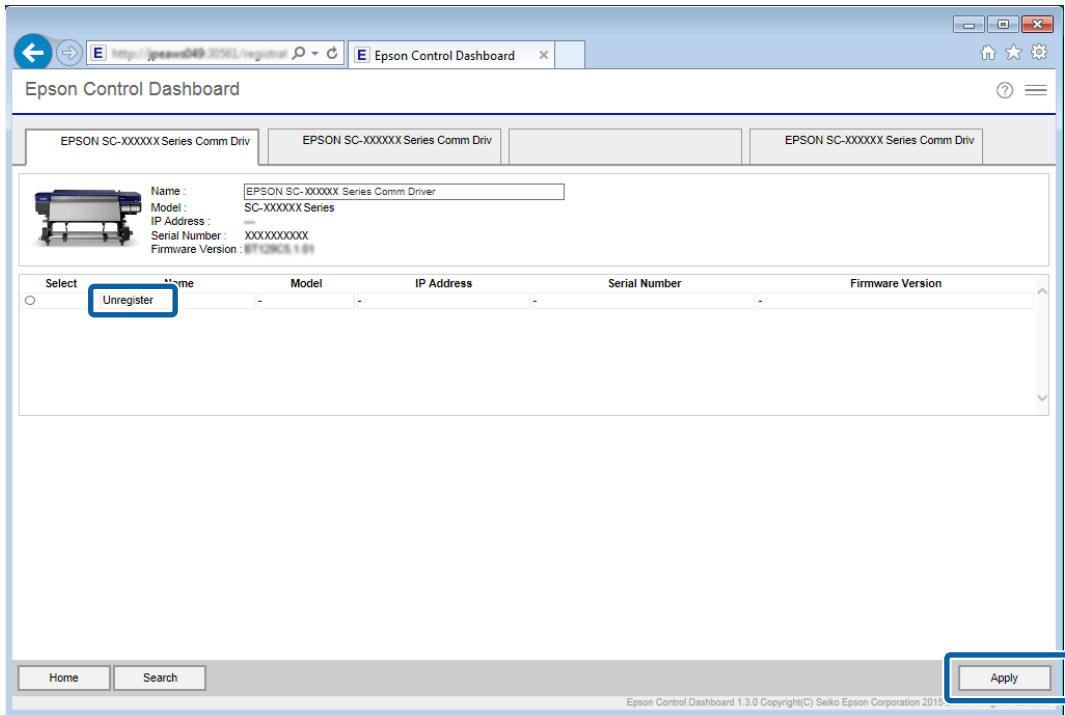
- 1 Start the Dashboard. Select the tab for registering printers, and then click **Search**.  
Any unregistered printers that are connected to the network or that are connected by USB to your computer are displayed.



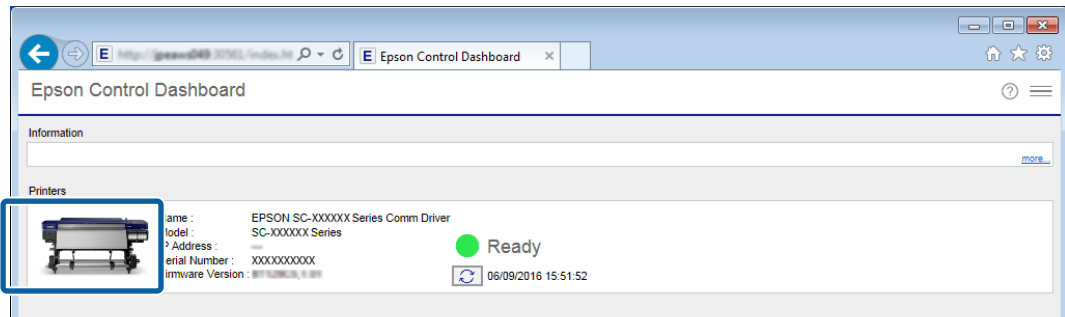
## Preparations for Printing

**2** Select the printer you want to register, and then click **Apply**.

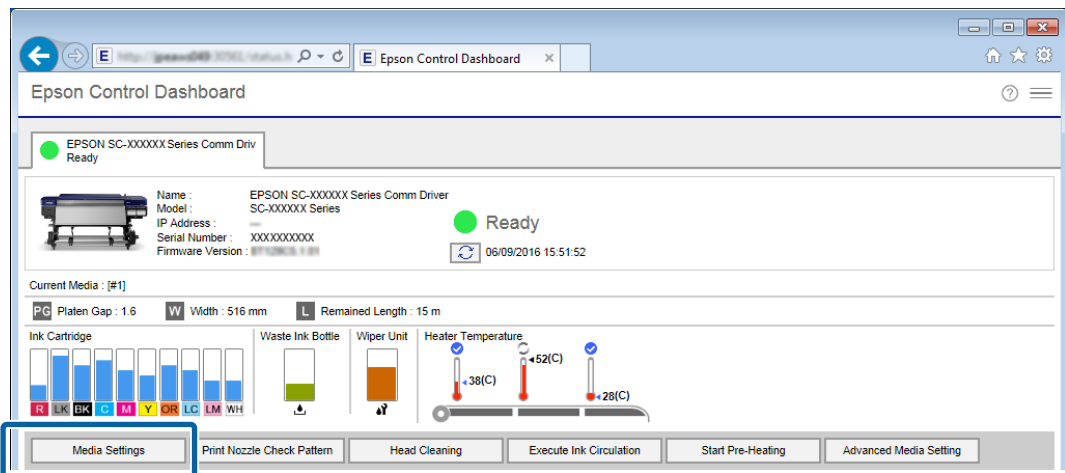
Data is being acquired from the printer while the icon that displays the printer's status icon is . Do not operate the computer.



**3** On the **Home** screen, click your printer.



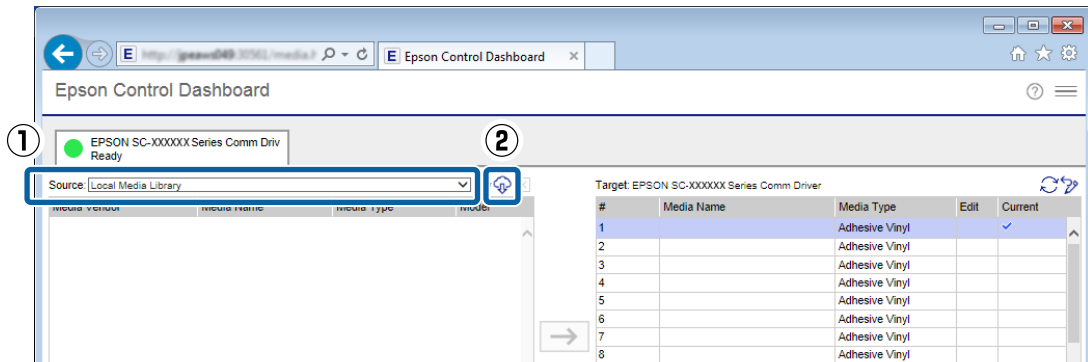
**4** Click **Media Settings**.



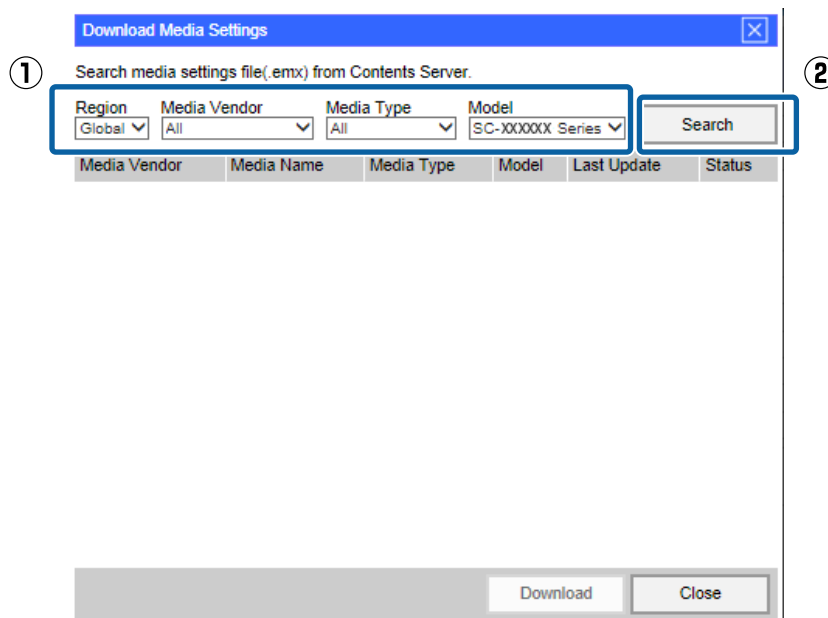


## Preparations for Printing

**5** On **Source**, select **Local Media Library**, and then click .



**6** Select the **Region**, **Media Vendor**, **Media Type**, and **Model**, and then click **Search**.  
EMX files that match your search conditions are displayed.



**7** Click the necessary EMX file, and then click **Download**.

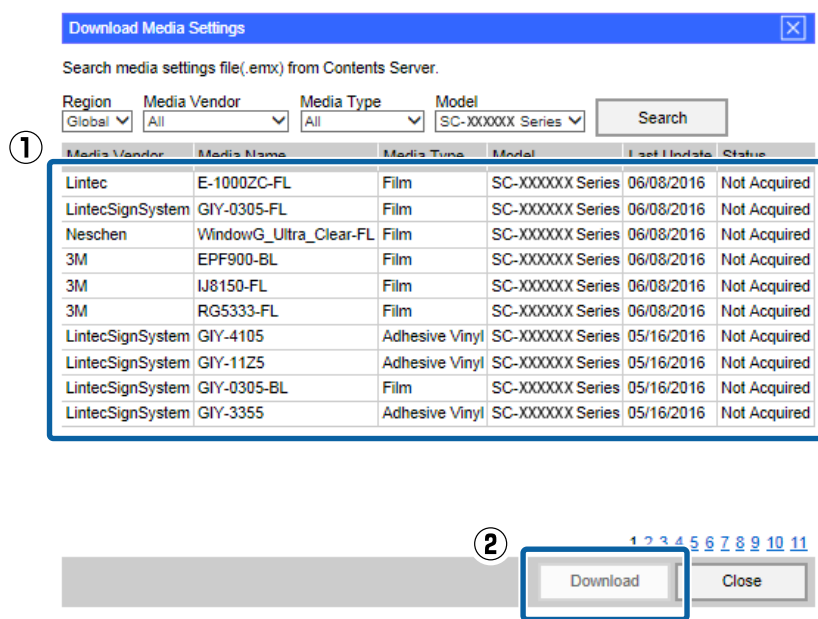
The EMX files are saved in the following locations. You cannot change the location in which they are saved.

**Windows:** %PUBLIC%\Documents\Epson\Epson Control Dashboard\XXX\*

**Mac OS X:** /Library/Caches/Epson/Epson Control Dashboard/XXX\*

\* The final XXX are the 3 characters after SC- for the model of your printer (e.g., "S80" when the model is SC-S80600 Series).

## Preparations for Printing



### Note:

The **Status** of the EMX files is indicated below.

- Not Acquired:**  
These are EMX files that have never been downloaded before.
- Acquisition Complete:**  
These are EMX files that have been downloaded and have not changed since they were downloaded.
- Update Available:**  
These are EMX files that were changed after they were downloaded. Downloading them overwrites the EMX files that have already been downloaded.

If you need several EMX files repeat steps 6 through 7 to download them one at a time.

8

Click **Close**.

The EMX files are imported and the list of source media settings is displayed. You cannot click **Close** while downloading EMX files. Wait until the button becomes enabled.

Next, register the media setting values to the printer.

[“Registering the Media Setting Values to the Printer” on page 11](#)

### Important:

Be sure to register the media setting values to the printer in advance. The RIP checks the media settings registered to the printer. You cannot use the function for automatically importing print information from the EMX files.

## Preparations for Printing

# Registering the Media Setting Values to the Printer

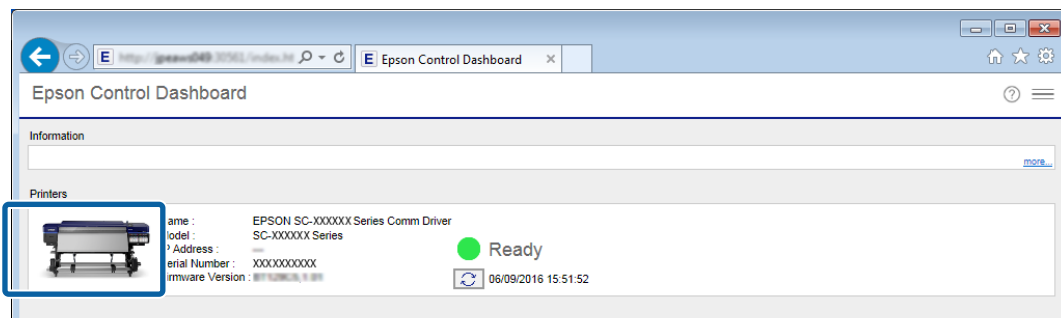
In this section we explain the procedures for registering the media setting values for the print media with the Dashboard.

### **!** Important:

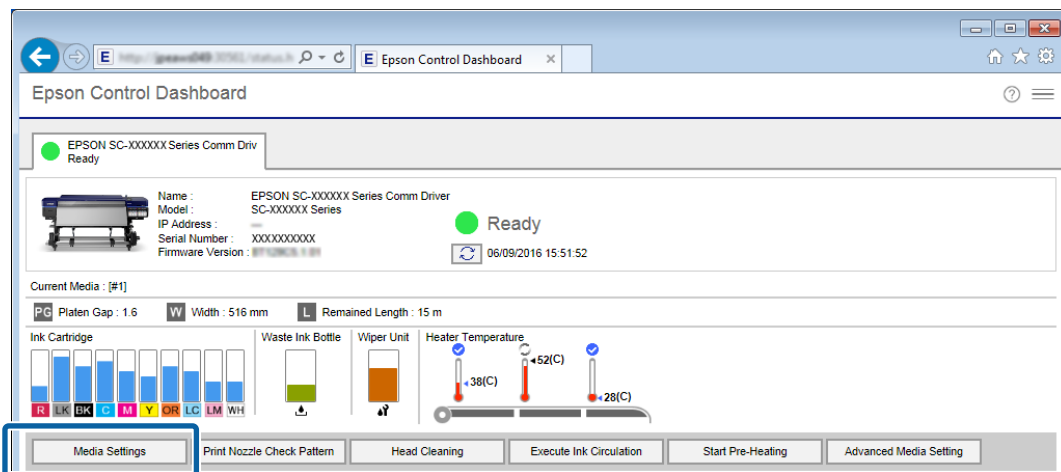
- ❑ **Be sure to exit the RIP before starting an operation.**  
*If the Dashboard goes offline, you may not be able to automatically import print information to the RIP, or the operation may be unsuccessful.*
- ❑ **Do not do other operations on the printer while registering the media setting values.**  
*Printing may be interrupted, or registration of the media setting values may be unsuccessful, if you operate the printer's control panel or print while registering. We recommend telling those around you before you start registration when there are several users sharing the printer.*

If you are continuing to register after downloading the EMX files, start from step 3.

- 1** Start the Dashboard. On the **Home** screen, click your printer.



- 2** Click **Media Settings**.

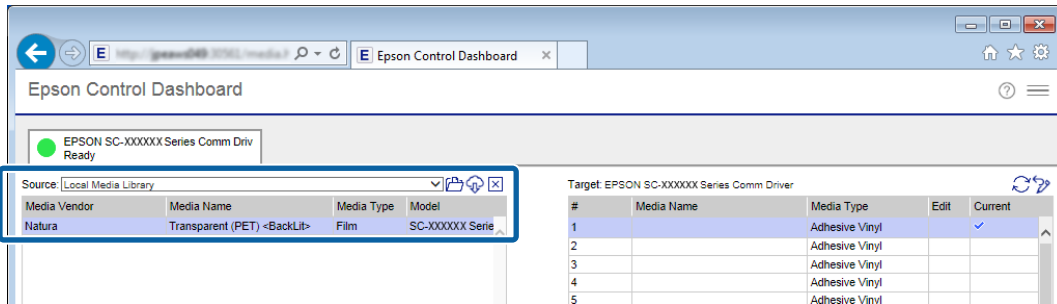


- 3** In **Source**, select one of the following, and then click the media settings you want to set.


- ❑ EMX files downloaded with your computer:  
**Local Media Library**
- ❑ Setting backup file (cpb) of other printer:  
**Custom Media Backup (cpb)**

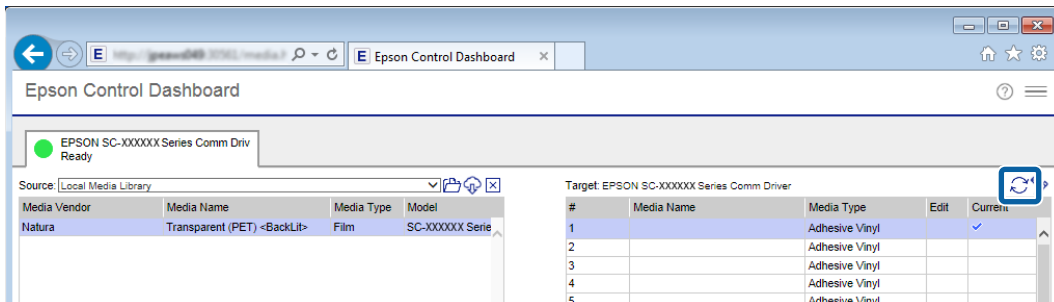
### Preparations for Printing

- Media settings of other printers registered to the Dashboard:  
Name of the printer you want to register



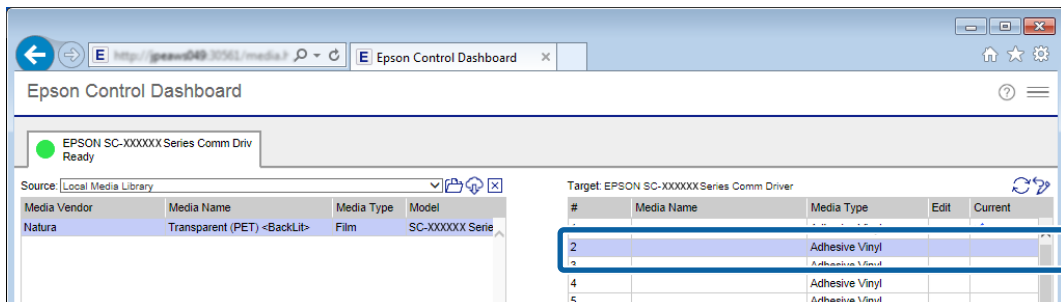
If the printer is connected by USB, proceed to step 4. If the printer is connected by any other means, proceed to step 5.

- 4 Click  to update to the latest printer status.




- 5 In **Target**, click the media setting that writes the settings.

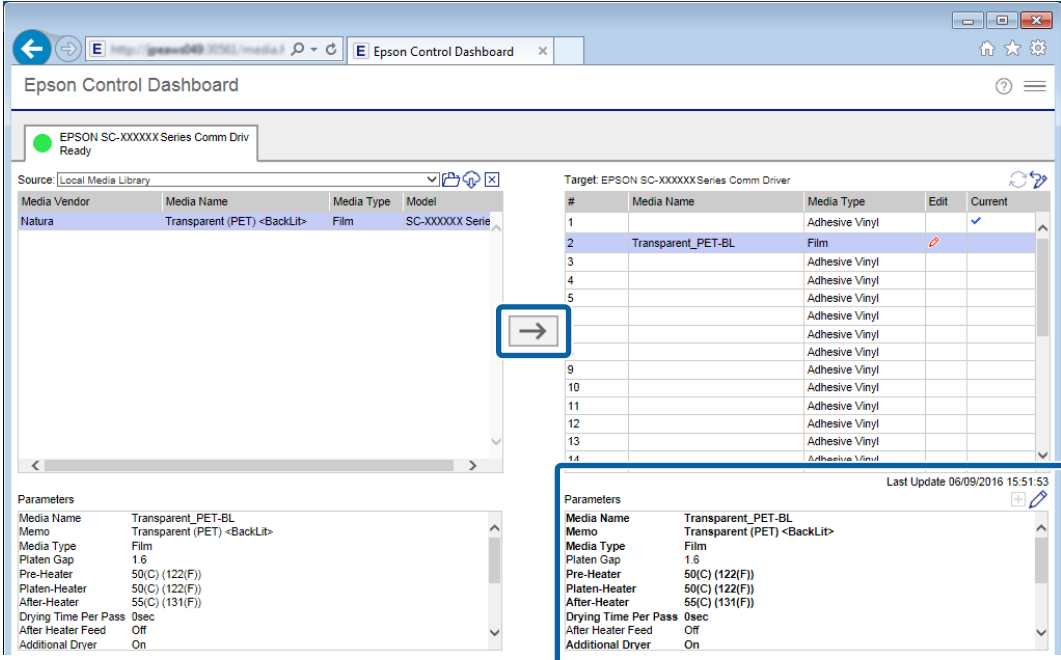
Be aware that the values for the settings are overwritten if you select media settings to which settings have already been saved.



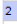
## Preparations for Printing

6 Click .

The display for media settings in **Target** is updated. You can check the details of the updates in Parameters under the list. If you need to customize the settings before writing to the printer, click  to edit the settings.

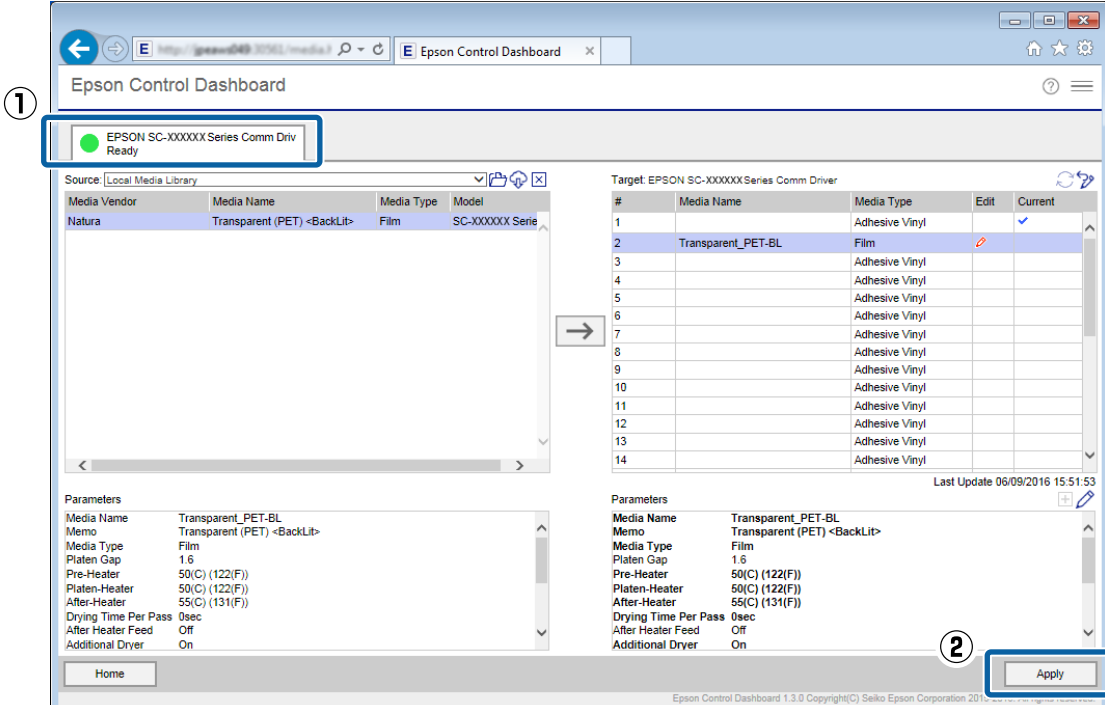


The screenshot shows the Epson Control Dashboard interface. The 'Source' tab is selected, and the 'Target' tab is highlighted with a blue box. An arrow points from the 'Source' tab to the 'Target' tab. The 'Parameters' section for the target media is also highlighted with a blue box.

#	Media Name	Media Type	Edit	Current
1		Adhesive Vinyl		✓
2	Transparent_PET-BL	Film		
3		Adhesive Vinyl		
4		Adhesive Vinyl		
5		Adhesive Vinyl		
9		Adhesive Vinyl		
10		Adhesive Vinyl		
11		Adhesive Vinyl		
12		Adhesive Vinyl		
13		Adhesive Vinyl		
14		Adhesive Vinyl		

7 Check that the icon that displays the printer's status is  (Ready), and then click **Apply**.

The media setting values are written to the printer.



The screenshot shows the Epson Control Dashboard interface. The printer status is 'Ready' (green dot). The 'Apply' button is highlighted with a blue box and a circled '2'.

If you are using multiple printers of the same model, or if you are using multiple models, register the media settings to all of the printers using the same steps.

## Preparations for Printing

Next, do **Media Adjust** in the printer's settings menu. The print results may be grainy or have banding if Media Adjust is not done. When doing Media Adjust, correctly load the media while paying attention to the following points.

- ❑ Load media in the same way as which it will actually be used.
- ❑ On the **SelectMedia** screen, select the number to which the values of the media settings are registered.  
See *User's Guide* (online manual) for details about the procedure.

# Doing Initial Settings for the RIP and Importing Print Information

## For ONYX RIP

Install ONYX RIP on the computer on which the Dashboard is installed, and then do the initial settings. After that, ONYX RIP checks the media setting currently selected on the printer and automatically imports the print information from the EMX files.

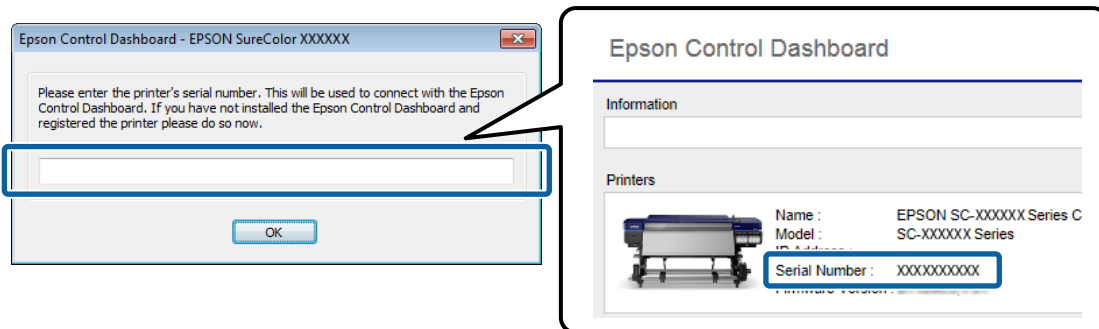
## Initial Settings for the RIP

After installing ONYX RIP, copy the Epson special profile for wide color gamut printing to the appropriate folder. If you have finished installing ONYX RIP, start from step 2.

1

Install ONYX RIP and the printer driver (.PrnInst) for ONYX RIP.

If the following screen appears during installations, copy and input the Serial Number for the printer that is displaying the **Home** screen for the Dashboard.



If you are using multiple models, install the printer driver (.PrnInst) for all models, and then correctly input the Serial Number of your printer.

2

Copy the Epson special profile for wide color gamut printing to the following folder.

**Source:**  
%PUBLIC%\Documents\Epson\Control Dashboard\Profile

**Target:**  
Installation folder for ONYX RIP - profiles - CMYK

## Preparations for Printing

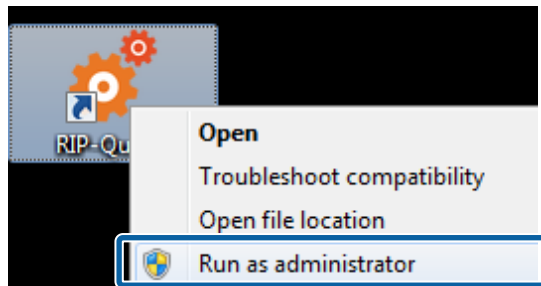
**Note:**

If you cannot find the folder, search the folder for the Source, "EpsonWideCMYK", and the Target, "OnyxCMYK".

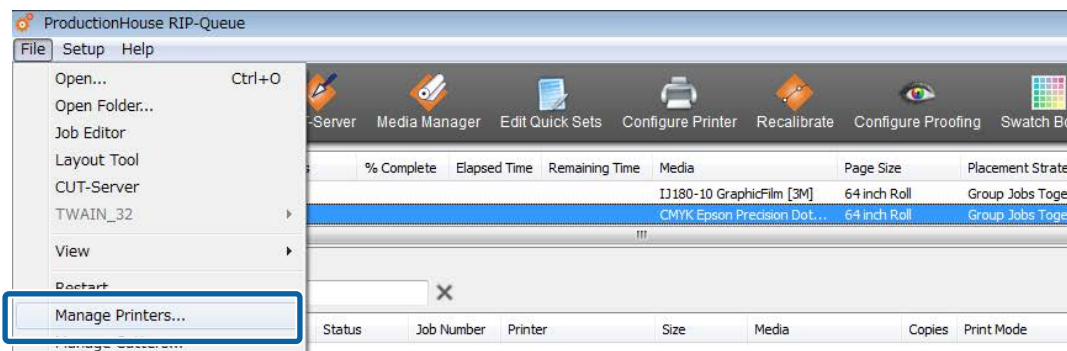
If you are using several of the same model of printer, add the printers using the following procedure.

### Adding Printers

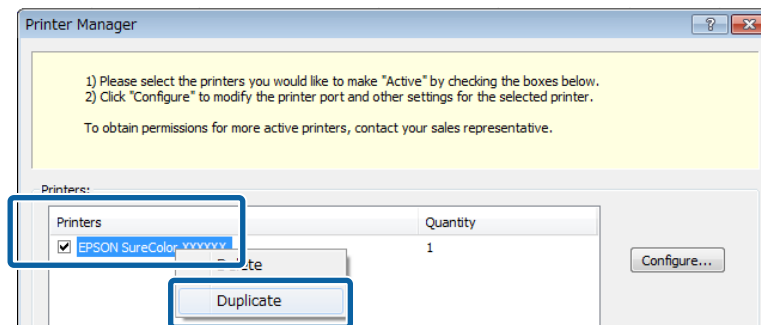
- 1 Right click the RIP Queue icon and select **Run as administrator**.  
Be sure to start using administrator mode.



- 2 Click in the order of **File - Manage Printers**.

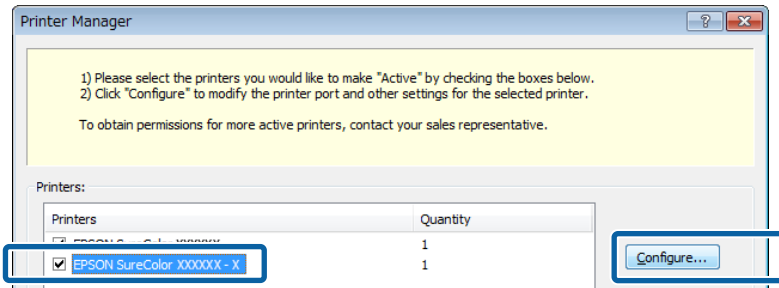


- 3 Select the printer you want to add, and then right click and select **Duplicate**.

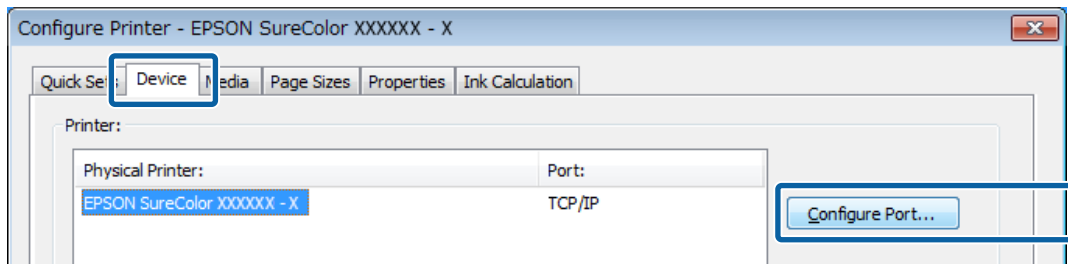


### Preparations for Printing

**4** Select the printer that was just added and click **Configure**.

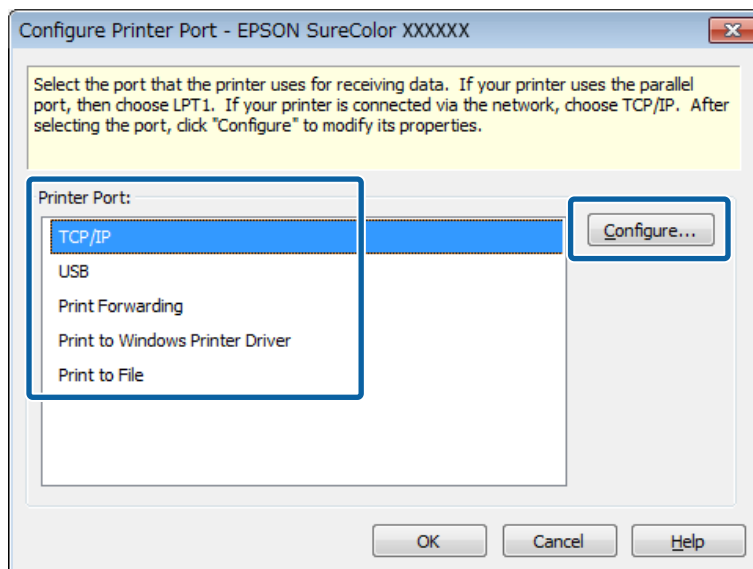


**5** On the **Device** tab, click **Configure Port**.



**6** Select **Printer Port**, and then click **Configure**.

- With USB connection:  
Select **Print to Windows Printer Driver** and select your printer.
- With network connection:  
Select **TCP/IP** and input the IP address displayed on the Home screen of the Dashboard to **Host name or IP address**.

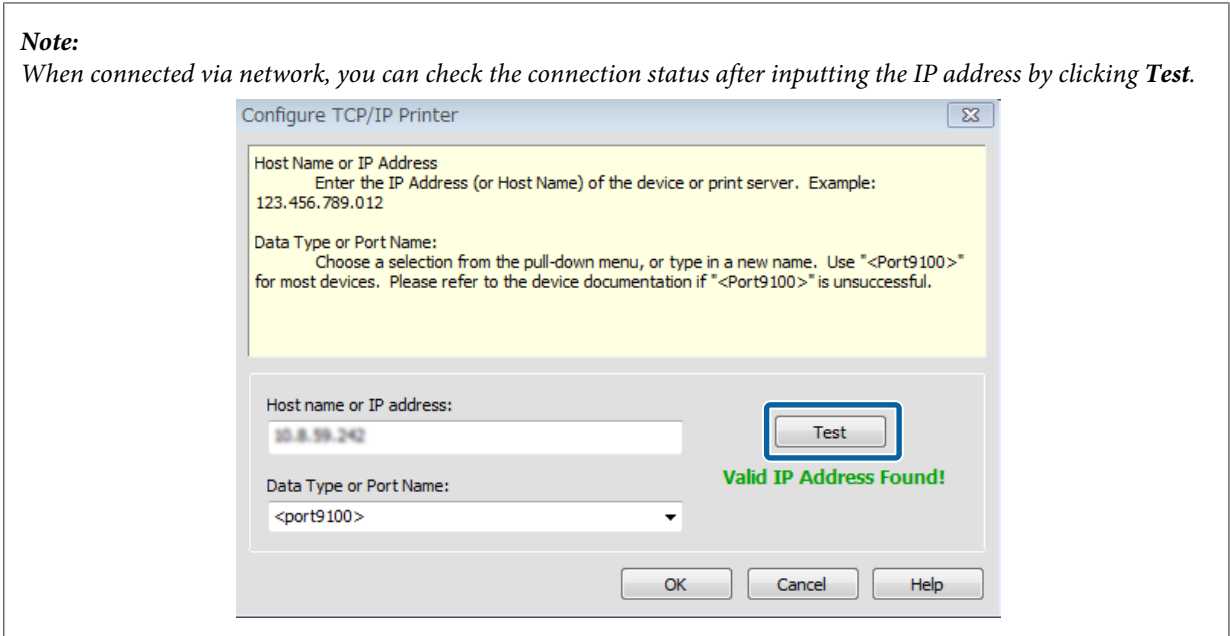




### Preparations for Printing

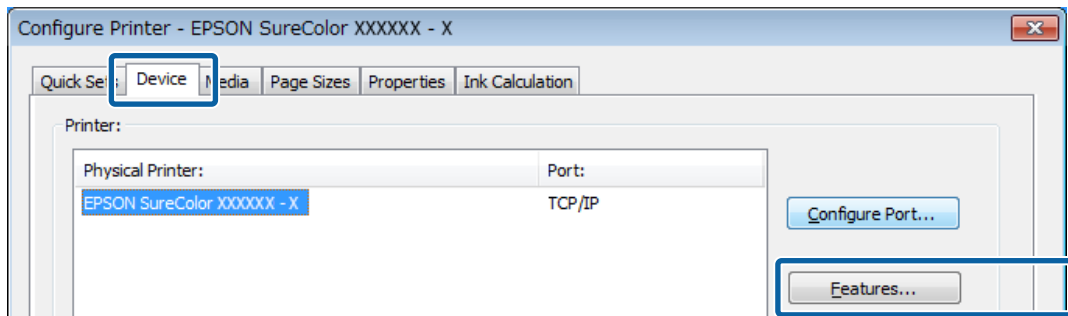
**Note:**

When connected via network, you can check the connection status after inputting the IP address by clicking **Test**.

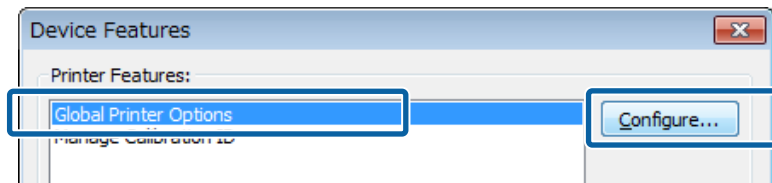


Once you have finished doing the settings, click **OK** to return to the **Device** tab.

- 7 On the **Device** tab, click **Features**.



- 8 Select **Global Printer Options** and click **Configure**.

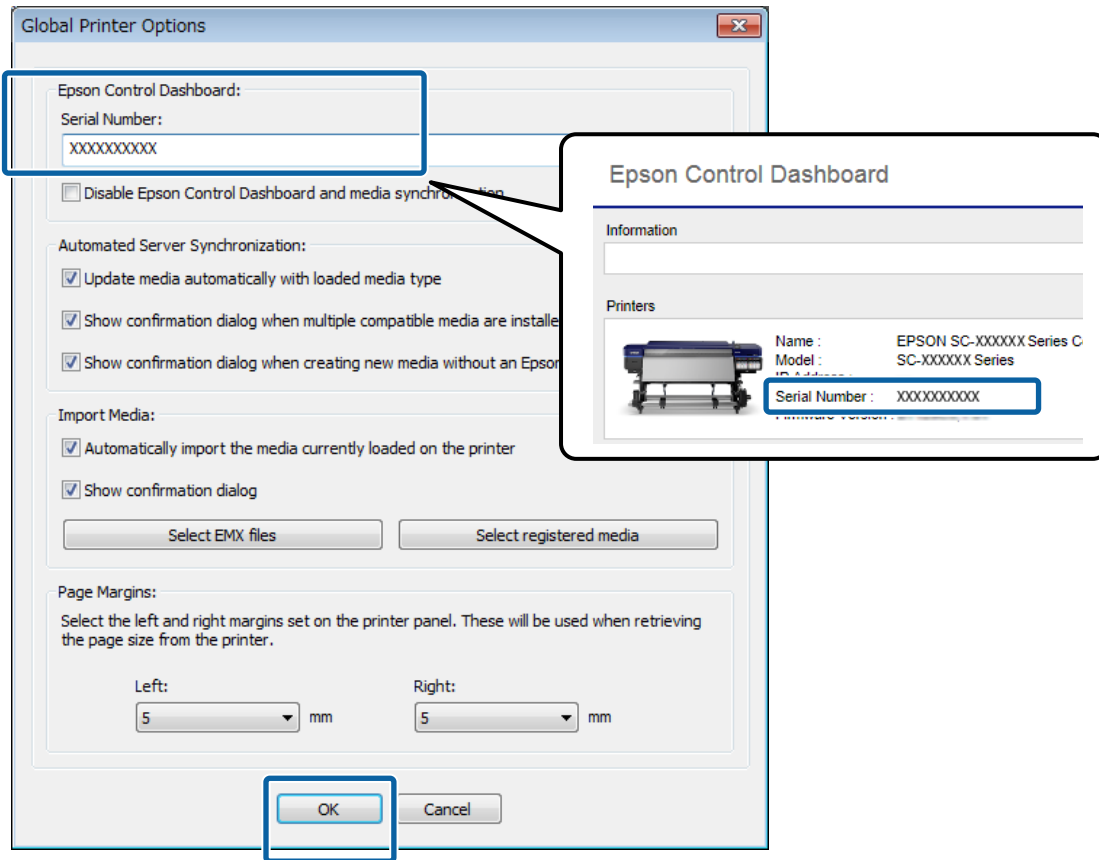


## Preparations for Printing

9

Input the Serial Number for the your printer, and then click **OK**.

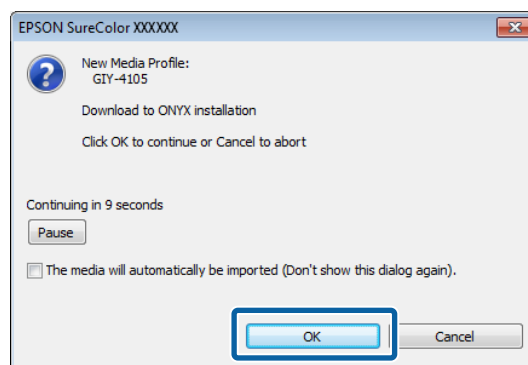
You can check the printer's Serial Number on the **Home** screen of the Dashboard.



## Automatically Importing Print Information

A confirmation screen appears in the following instances. Click **OK** to automatically import the print information to the RIP.

- If you are starting the RIP for the first time
- If, on the printer, you selected a media settings number for media that does not have print information imported to the RIP



After you select **The media will automatically be imported**, the print information is automatically imported without displaying a confirmation screen.

## Preparations for Printing

If you are importing print information for several media at once, see the following and import manually.

[“Manually Importing Print Information” on page 19](#)

### Manually Importing Print Information

In this section we explain how to manually import print information from EMX files to the RIP. On the Dashboard, register the values of the media settings to the printer ahead of time and do **Media Adjust** in the printer's settings menu.

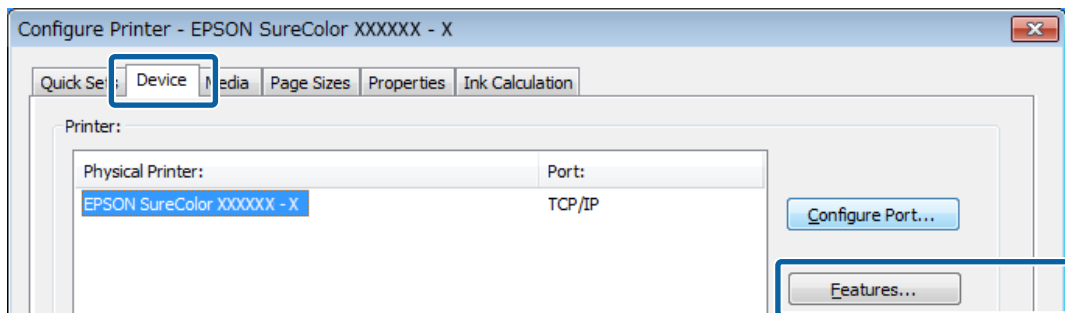
- 1 Double click the RIP Queue icon.



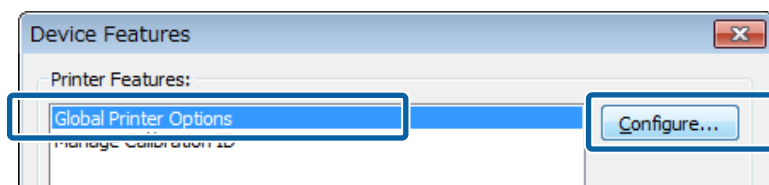
- 2 Click **Configure Printer** in the toolbar.



- 3 On the **Device** tab, click **Features**.



- 4 Select **Global Printer Options** and click **Configure**.



- 5 Select one from **Import Media** according to the status of the EMX file.

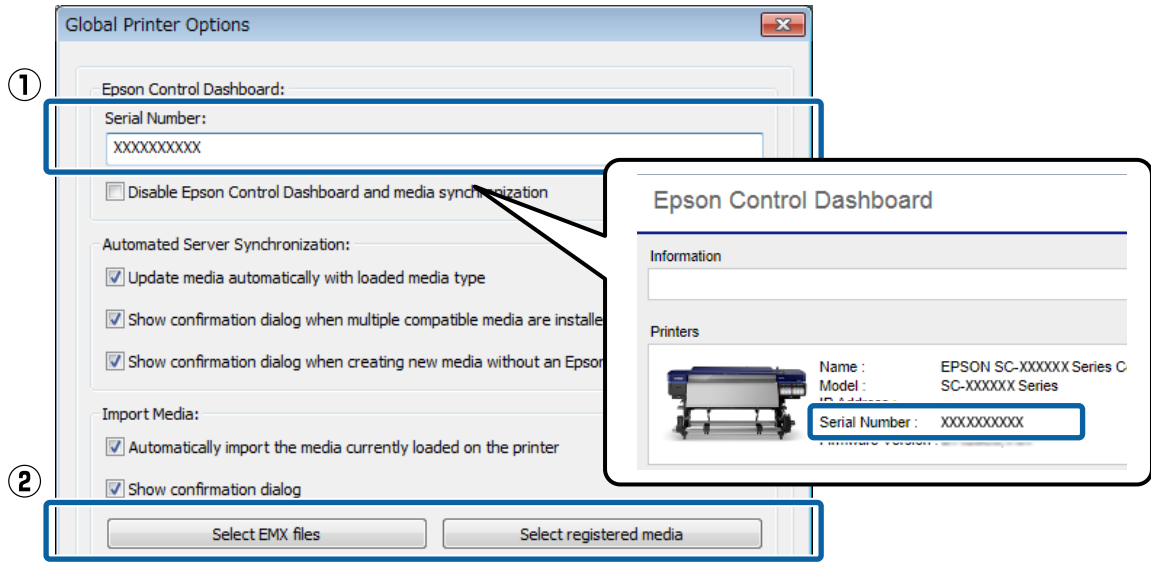
**EMX files copied from another computer:**

In (2), select **Select EMX files** and select the file that you want in the folder that stores EMX files.

**EMX files downloaded with your computer:**

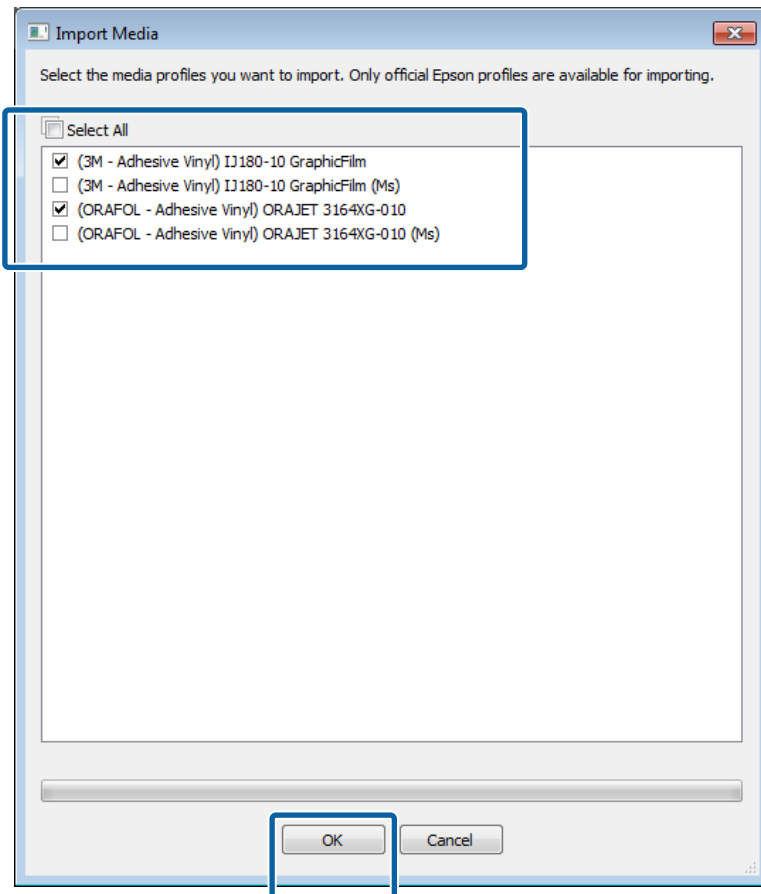
In (1), check whether the Serial Number for your printer is displayed in **Serial Number**, and then select **Select registered media** in (2). You can check the printer's Serial Number on the **Home** screen of the Dashboard.

### Preparations for Printing



**6** Select the print information you want to import and click **OK**.

This displays a list of the print information from the EMX files you selected in step 5. Select the necessary items. You can import all of the displayed print information if you select **Select All**.



## Preparations for Printing

# Creating Print Modes Often Used with the RIP

## For ONYX RIP

There is some software bundled with ONYX RIP (such as RIP Queue, Media Manager, and Job Editor — the contents differ depending on the RIP you are using). From now, we will explain how to setup RIP Queue, which can do print job management and print mode settings, below.

In RIP Queue, you can save print modes that you often use as a preset called quick set.

By creating a quick set, you do not need to do bothersome printer settings every time. You can print using the same print mode simply by reading the print data and selecting the quick set.

[🔗 “Creating Quick Sets” on page 21](#)

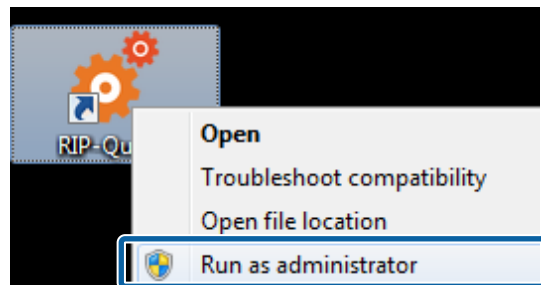
A hot folder with the same name is also automatically made when you create a quick set. If you do the following preparations, you can easily print just by dragging and dropping the print data to the shortcut icon for the hot folder.

[🔗 “Preparations for Hot Folder Printing” on page 25](#)

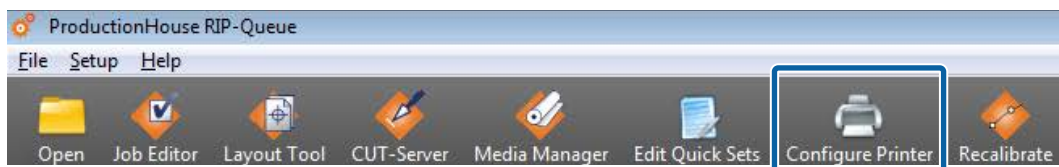
## Creating Quick Sets

- 1 Right click the RIP Queue icon and select **Run as administrator**.

Always start the software in administrator mode when you update or create new quick sets.

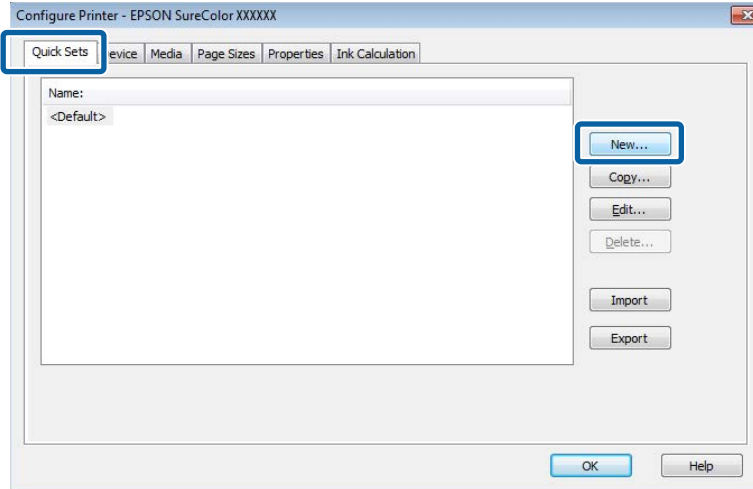


- 2 Click **Configure Printer** in the toolbar.



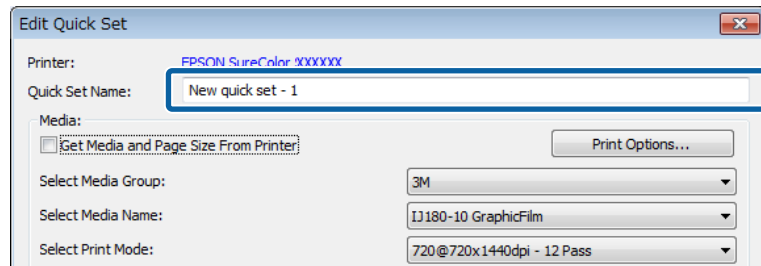
## Preparations for Printing

- 3** In the **Quick Sets** tab, click **New**.

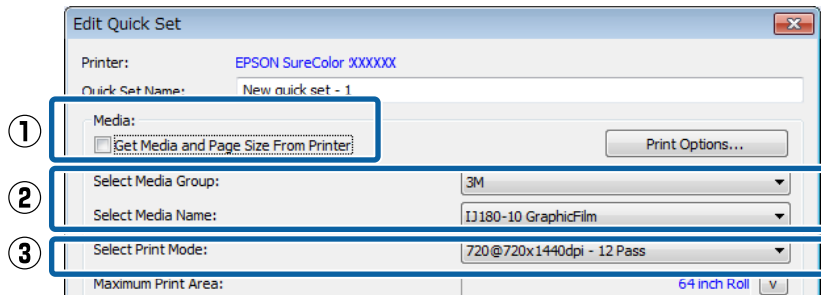


- 4** Input the **Quick Set Name**.

We recommend using a name that is easy to understand for the other person that is printing something.



- 5** Clear (1) and do the print settings in (2) and (3).



If you plan on printing immediately after doing the settings, in (2), be sure to select the same media and the media setting values (the media setting of the media on which you are going to print now) that are selected on the printer's control panel. See below for the parameters for (3).

### How to Read Print Mode

In the following settings, the print data (input resolution of 360 dpi) undergoes output processing at 720 x 1440 dpi and is printed in 32 passes. The following table describes the meanings of the setting names ① through ③.

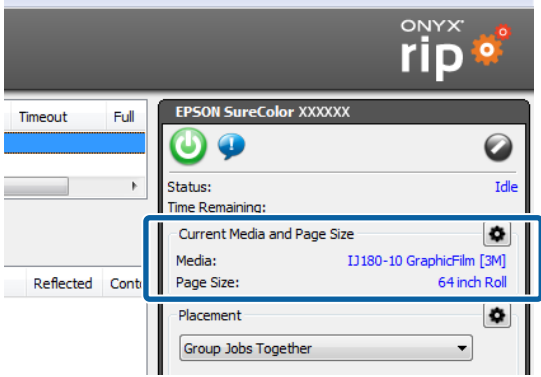
360 @ 720x1440dpi - 32 Pass  
①
②
③

- |          |   |
|----------|---|
| <b>①</b> | Indicates the input resolution. You can select either 360 or 720 dpi. |
|----------|---|

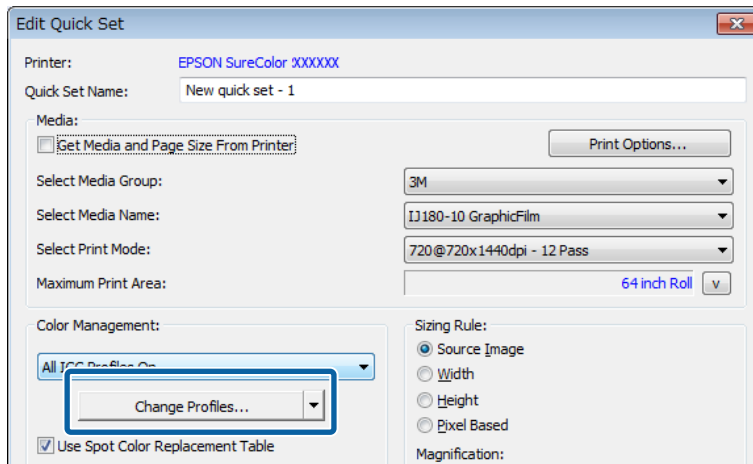
### Preparations for Printing

②	Indicates the output resolution of the RIP. The higher the number the better the print quality, but the printing speed decreases.
③	Indicates the print passes (how many times printing is split for one interval). The higher the number the better the print quality, but the printing speed decreases. Depending on the media you are using, the term High Quality may appear following the name of the media. This setting helps prevent the occurrence of uneven density and banding with the number of passes set, but it reduces the print speed.

**Note:**  
 If you select (1), the Media and Page Size in **Current Media and Page Size** on the Print Status screen that is displayed on the right side of the RIP Queue screen are displayed and you can only select the settings for **Select Print Mode**.



### 6 Click Change Profiles in Color Management.



### 7 See the following table when setting (1) through (3) in the Profiles tab. Click OK.

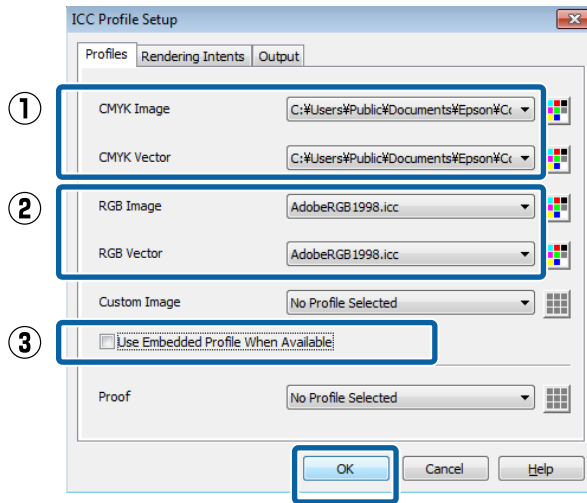
Ordinarily, do not change any settings other than (1) through (3). Doing so makes it difficult to match the colors as intended.

(1)	Select the profile for CMYK. Select EpsonWideCMYK_Ver2.icc if you want to do brightly colored printing with a wide color gamut for signs, etc. Select FOGRA, SWOP, or GRACoL, etc., if you want to print in colors used in general printing, such as offset printing.
(2)	Select the profile for RGB. We recommend AdobeRGB1998.icc if you want to do brightly colored printing with a wide color gamut for signs, etc. We recommend sRGB.icc if you want to print in colors used in general printing, such as offset printing.
(3)	Specify the processing for when profiles are embedded in the print data. Selecting this references the input colors of the embedded profile.

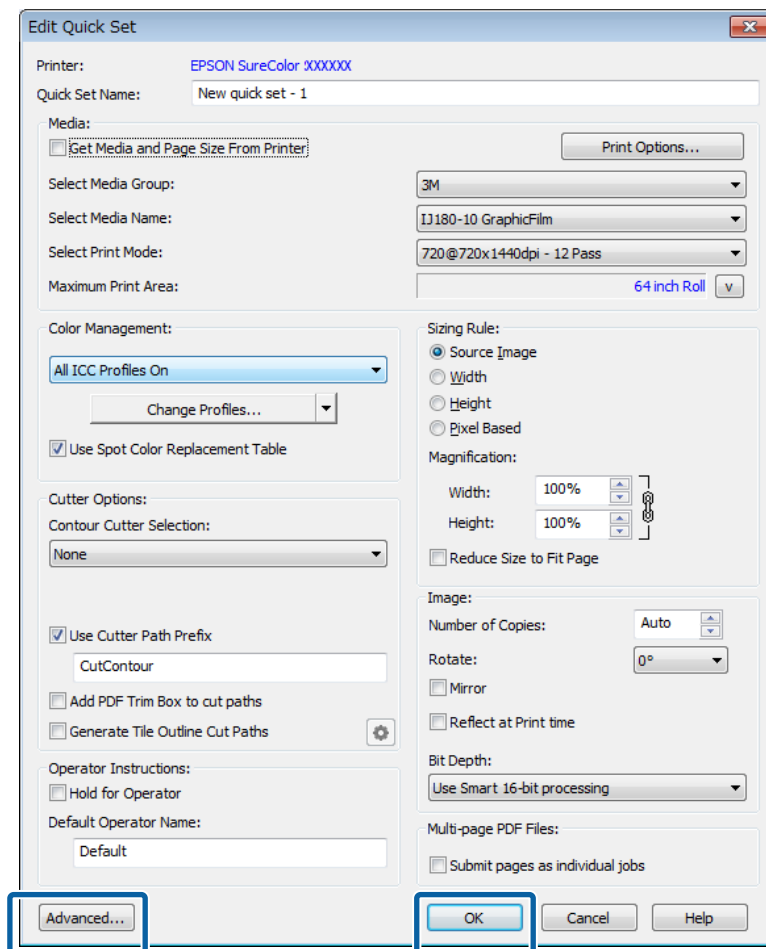
## Preparations for Printing

See the following for settings for printing with the display colors in the image processing software and how to check print results in advance.

 “Matching the Print Results to the Displayed Color of Print Data” on page 37



- 8** Do the other settings as needed. Click **OK**.  
 If you want to do advanced settings, click **Advanced** on the bottom left of the screen.



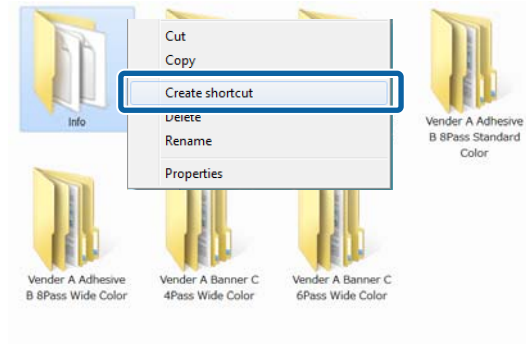


## Preparations for Printing

### Preparations for Hot Folder Printing

- 1 Right click the icon of the hot folder that you want to use and select **Create shortcut**.  
Hot folders are automatically created in the following location when quick sets are saved.

**Installation folder for ONYX RIP - input - inside the printer name folder**



**Note:**

*If you want to do hot folder printing through the network from another computer, consult with the network administrator, and then create a shortcut using the following procedure.*

- (1) Share the hot folder that you want to use.*
- (2) Create a shortcut on the **Map Network Drive**.*

- 2 Move the shortcut icon that you created to the desktop.

---

# Print Operations

---

In this section we explain how to print one print data as one job. See the manual for the RIP for how to automatically layout several print data and print them all at once, or for how to add margins and marks and print.

## For ONYX RIP

We recommend reading the print data in the RIP Queue to confirm the preview and then using a quick set to print it.

 [“Printing the Print Data While Checking it” on page 26](#)

Hot folder printing is useful when you do not need to check the print data.

 [“Hot Folder Printing” on page 28](#)

---

## Printing the Print Data While Checking it

**1** Correctly load the media into the printer.  
See *Operator's Guide* (booklet/online manual) for the procedure for loading media.

**2** Double click the RIP Queue icon.



**3** On the toolbar, click **Open**.



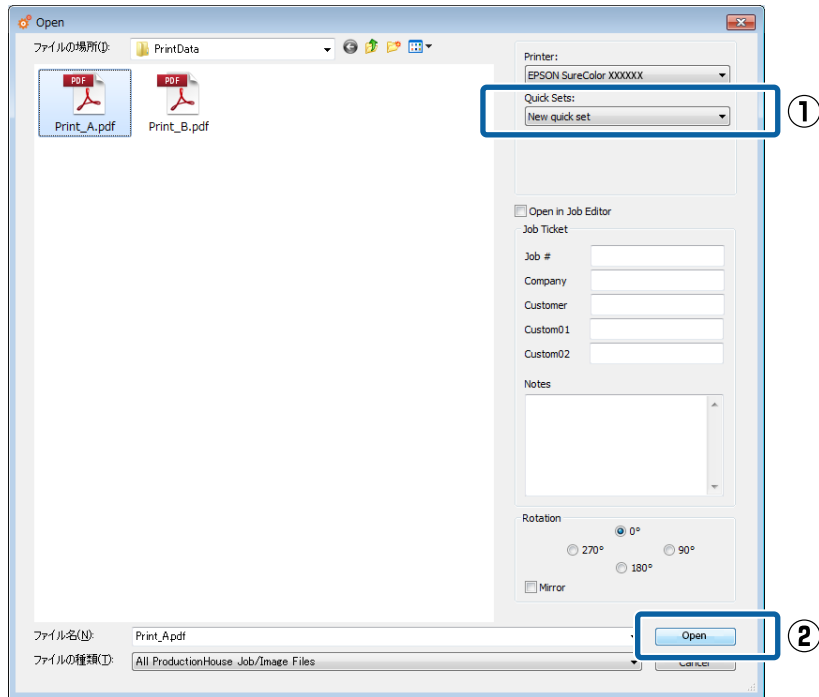
**4** Select the print data and quick set.

(1) Select a quick set for the same media as the media setting selected on the printer in **Quick Sets**.

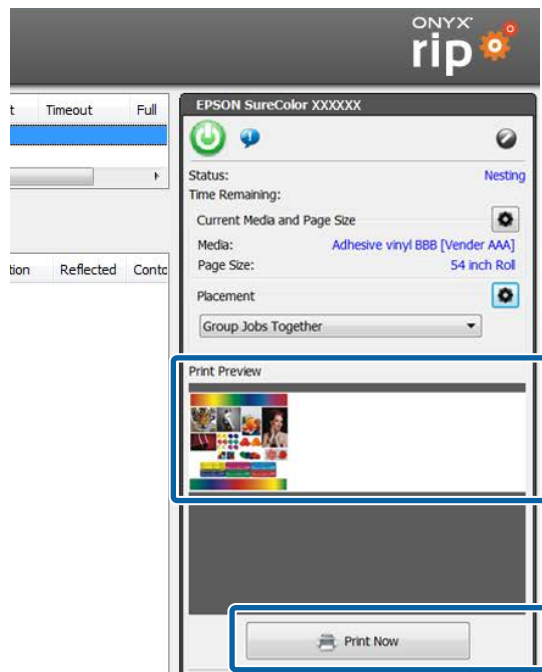
If you are using multiple printers, select the printers you are using on **Printer**, and then select **Quick Sets**.

(2) Select the print data on the preview screen on the left side. Click **Open**.

## Print Operations




- 5 On the Dashboard, check whether your printer is ready to print.  
If the status is anything other than Ready, check the details on the **Home** screen and do the necessary measures.
- 6 Check the print data in **Print Preview** on the right side of the screen. Click **Print Now**.



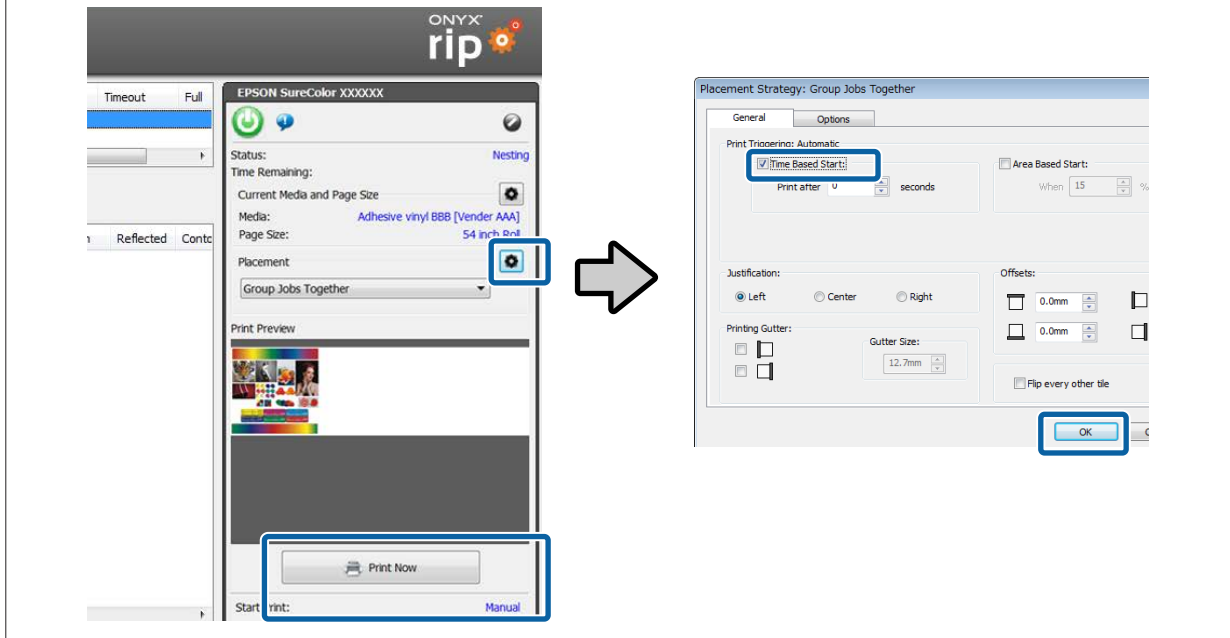
## Print Operations

### Note:

If a **Time** appears on the bottom right under **Print Now**, printing automatically begins after the set time after the print data is read. See the following procedure if you are disabling automatic printing.

(1) In **Placement**, click .



(2) Clear **Time Based Start** in the **General** tab, and then click **OK**.



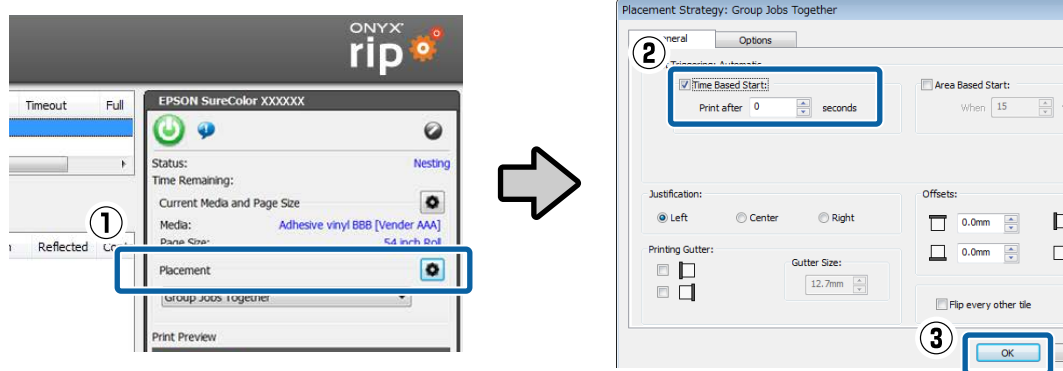
## Hot Folder Printing

### Important:

Do not do other operations with the RIP if you are doing hot folder printing. If you do RIP processing, etc., at the same time, printing may be interrupted.

- 1 Correctly load the media into the printer.  
See *Operator's Guide* (booklet/online manual) for the procedure for loading media.
- 2 Double click the RIP Queue icon.  

- 3 Set so that printing starts automatically.
  - (1) Click  in **Placement** in the printer status on the right side of the Rip Queue screen.
  - (2) Select **Time Based Start** in the **General** tab and set **Print after** to 0 seconds.
  - (3) Click **OK**.

## Print Operations




- 4 On the Dashboard, check whether your printer is ready to print.  
If the status is anything other than Ready, check the details on the **Home** screen and do the necessary measures.
- 5 Drag and drop the print data to the shortcut icon for the hot folder.

## Canceling Printing

Generally, software RIP executes printing while spooling the data to the computer and printer. Therefore, even if printing is canceled on either the computer or the printer, the data remaining on the other side continues to print.

If you are canceling printing completely, use the following steps to cancel both sides of the data spooled to the computer and printer.

- 1 Press the  button on the printer's control panel.  
The printing is paused.
- 2 Cancel the job being printed with the RIP and hold all the successive jobs.  
See the manual for the RIP that you are using for more details on the settings.

### When sending data from the RIP to the printer is complete

Printing cannot be cancelled from the RIP. Proceed to step 3 to cancel printing on the printer.

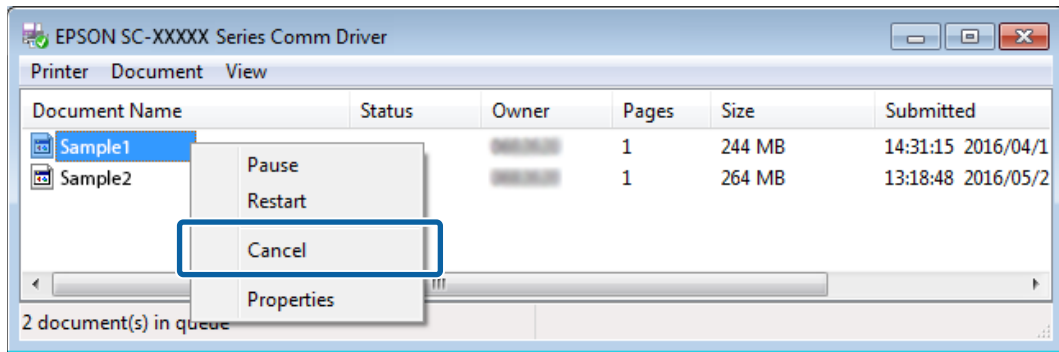
### When the data size for the job is large (Windows only)

In Windows (especially when connected via USB), jobs may also be spooled to the communication driver.

See the following steps to check the status of the communication driver and cancel the job that is being spooled.

- (1) Click in the order of **Start - Devices and Printers**.
- (2) Click the icon for your printer.
- (3) Right click on the job that you want to cancel printing. Click **Cancel**. If the job that you want to cancel is not on the list, the data has been sent to the printer. Proceed to step 3 to cancel printing on the printer.

## Print Operations



**Note:**

By doing the following settings, print data is sent directly to the printer without being spooled to the communication driver.

 [“The Estimated Print Time Does Not Match \(Windows Only\)” on page 33](#)

**3**

On the printer’s control panel screen, select **Job Cancel** and press the OK button.

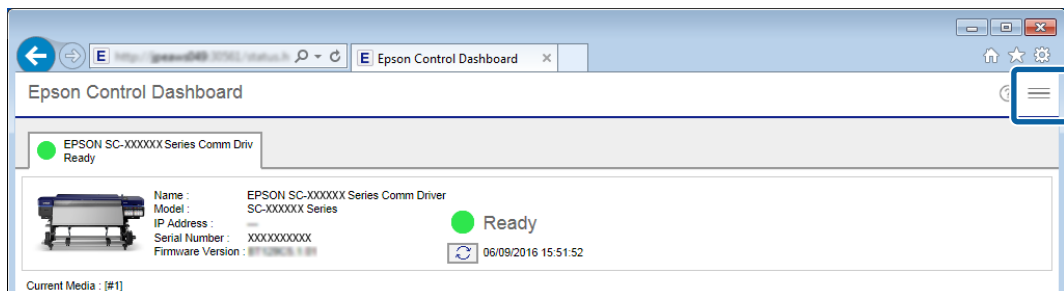
The job that is being printed is canceled. It may take some time before you are able to print again after a job has been canceled.

# Troubleshooting

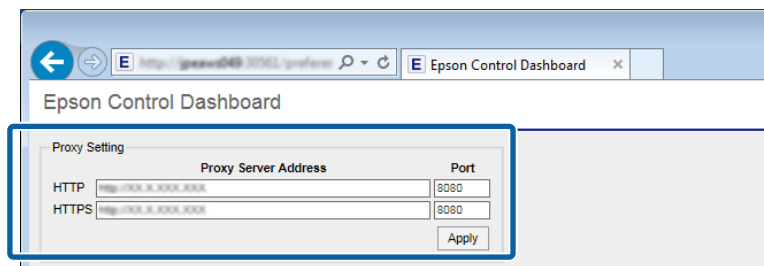
## EMX Files Cannot Be Downloaded on the Dashboard

See the following if a message is displayed when you click **Download** and you cannot download EMX files.

- 1 Select **Preferences** in ≡ (menu) on the Dashboard.



- 2 Check whether the **Proxy Setting** is correct.  
Check with the network administrator for details on proxy settings.



If you have changed the settings, restart your computer.

## Failed to Register the Media Setting Values/Failed to Import Print Information

Check the following.

### Were the media setting values from the EMX files on the Dashboard registered to the printer?

Print information is not automatically imported to the RIP just by downloading the EMX files on the Dashboard. If you are importing print information to the RIP, first register the values of the media settings to the printer.

[🔗 “Registering the Media Setting Values to the Printer” on page 11](#)

### Did you write the values of the media settings to the printer while the RIP was running?

If you are registering values of the media settings to the printer, quit the RIP until completing the registration and restart it again. Because RIP cannot automatically import print information without acquiring the information for the media setting values of the printer, the operation will fail if Dashboard is offline.

## Troubleshooting

### Are you accessing one printer from multiple computers on which the Dashboard is installed?

The printer may not operate correctly if you install the Dashboard on each of multiple computers, and then register the same printer on all of them. We recommend installing the Dashboard on only one computer if multiple computers are sharing the printer. If you are checking the status and media settings on another computer, use the Dashboard via remote access. You can remotely access the Dashboard by doing the following procedure.

- 1 Start the browser on another computer from which you want to access the Dashboard.
- 2 Input the following in the address bar.  
http://(name or IP address of the computer on which you installed the Dashboard):30561

### Is your printer added to the RIP correctly?

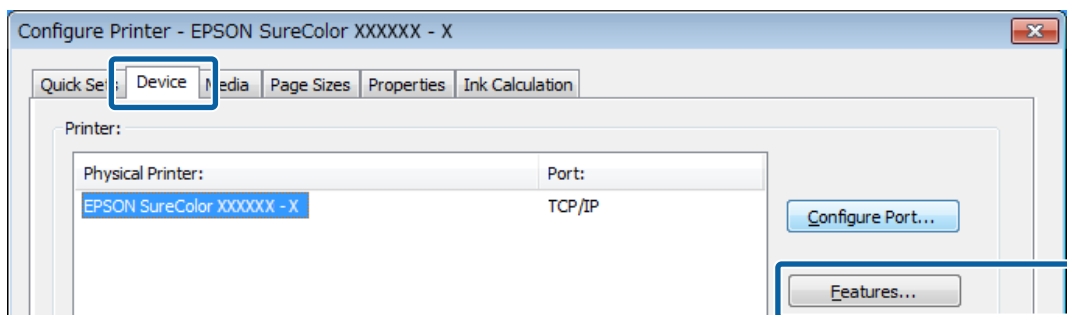
Check the settings for your RIP using the following procedure.

#### For ONYX RIP

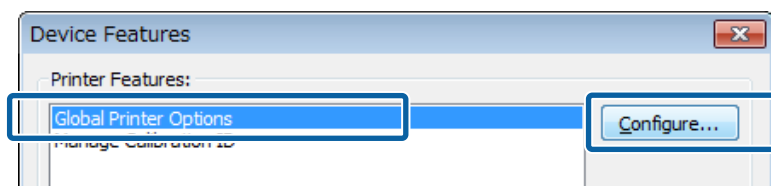
- 1 Start RIP Queue. Click **Configure Printer** in the toolbar.



- 2 On the **Device** tab, click **Features**.



- 3 Select **Global Printer Options** and click **Configure**.

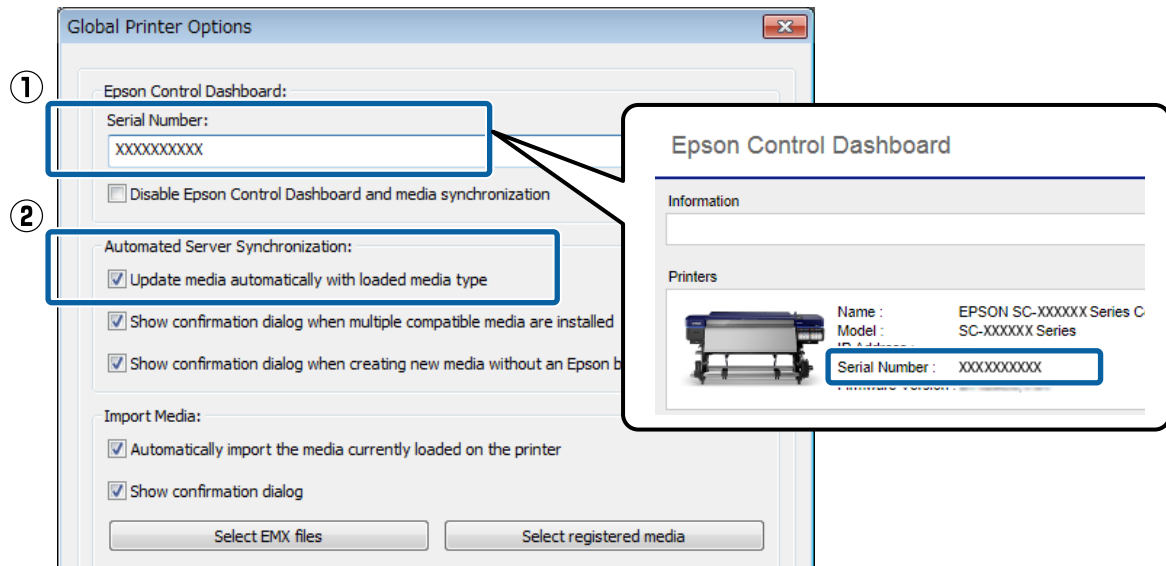


- 4 Check the following.
  - ❑ In (1), check that the Serial Number for your printer is displayed correctly. You can check the printer's Serial Number on the **Home** screen of the Dashboard.



## Troubleshooting

- ❑ Check that (2) is selected.



## The Estimated Print Time Does Not Match (Windows Only)

If the estimated print time does not match the actual time it takes, do the following settings in the communications driver.

By doing this, the print data is sent directly from the RIP to the printer.

### **Important:**

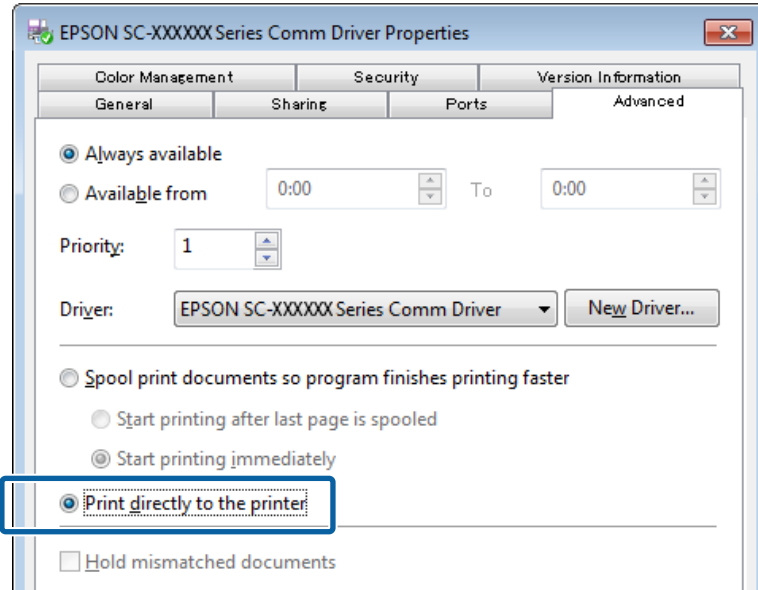
*If you change this setting, the printheads may stop and move while printing, and printing may be interrupted. If printing is interrupted, the colors before and after the interruption may change.*

- 1 Right click the icon for your printer in **Devices and Printers** in the Start menu. Select **Printer Properties**.

## Troubleshooting

2

In the **Advanced** tab, select the spooling method **Print directly to the printer**.



## Troubleshooting

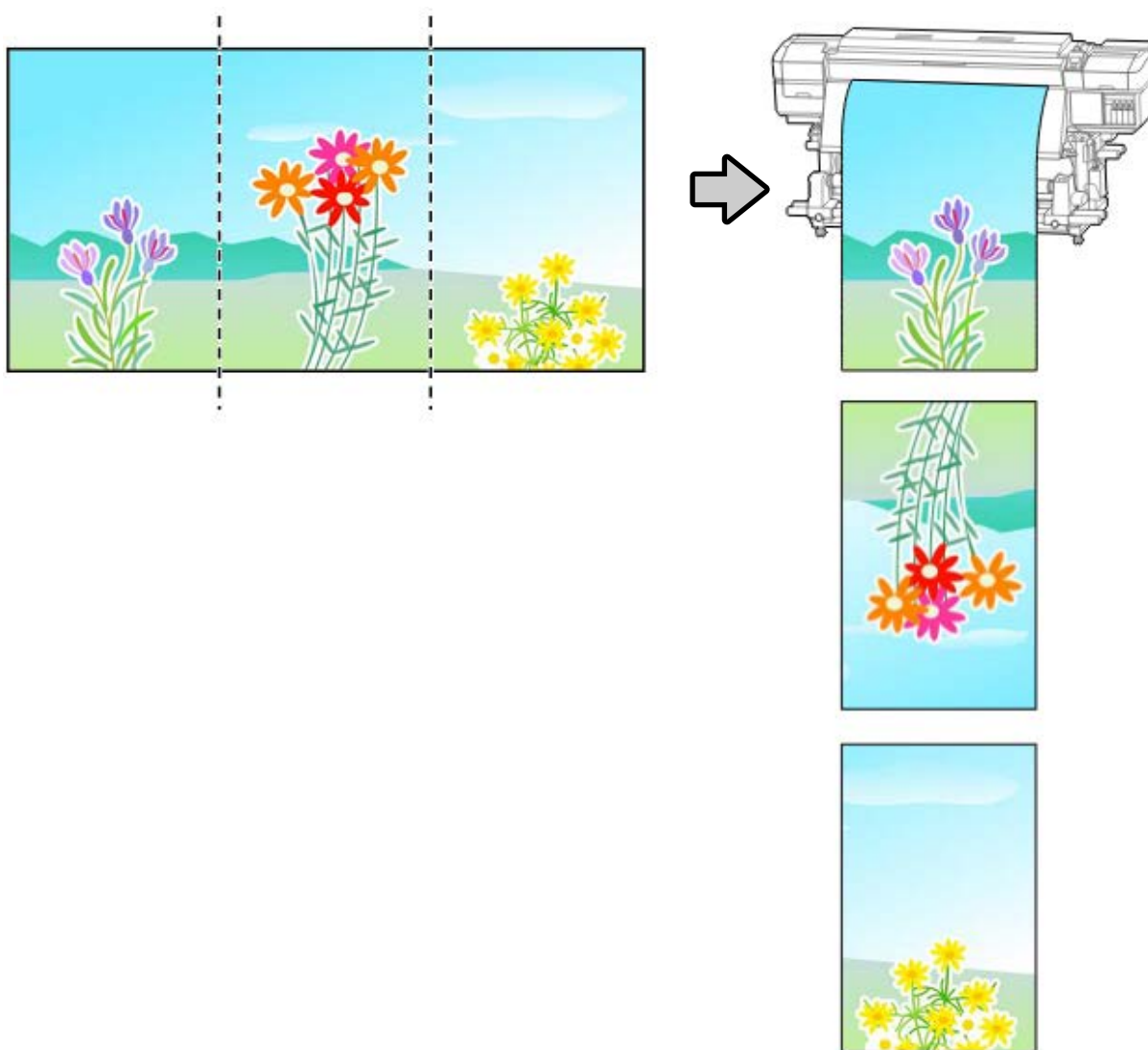
# The Seams between Pages Stand Out

If you divide an image into multiple pages, and then print it so that the pages alternatingly flip vertically, as shown, the seams where the pages are joined will not stand out.

### Tiled Printing (or Panel Printing)

See the following for the procedure for doing tiled printing with the RIP, from dividing the image to printing it so that they alternatingly flip vertically.

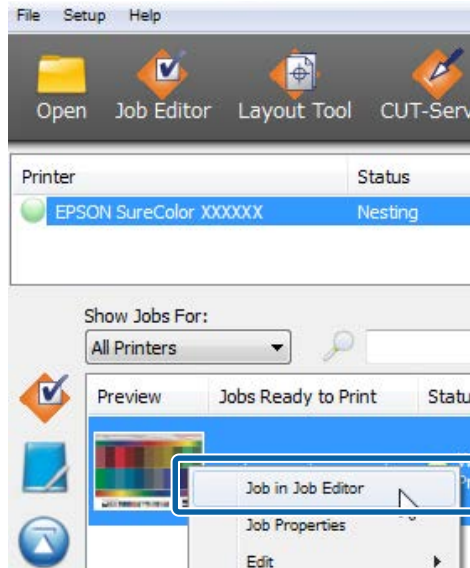
ONYX RIP  [“For ONYX RIP” on page 36](#)



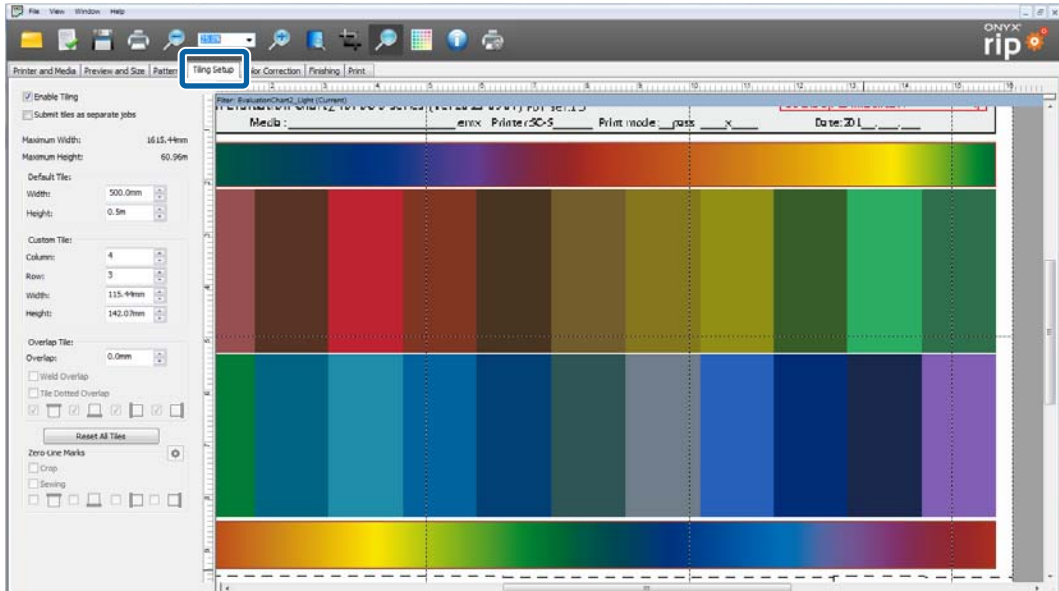
## Troubleshooting


### For ONYX RIP

- 1 Read the print data with RIP Queue. Right click **Preview**, and then select **Job in Job Editor**.




- 2 Do the settings for tiled printing in the **Tiling Setup** tab. See the manual for the RIP for details on these settings.

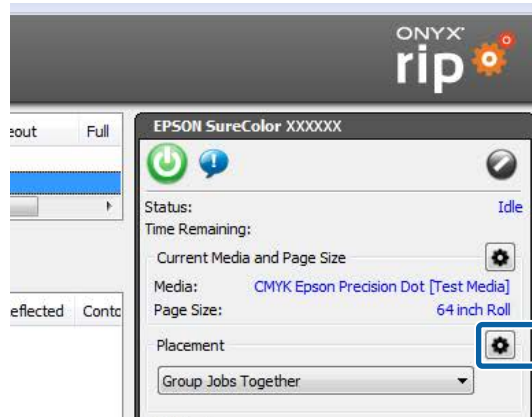


- 3 Once you finish doing the settings for tiled printing, click . This takes you back to the RIP Queue screen.

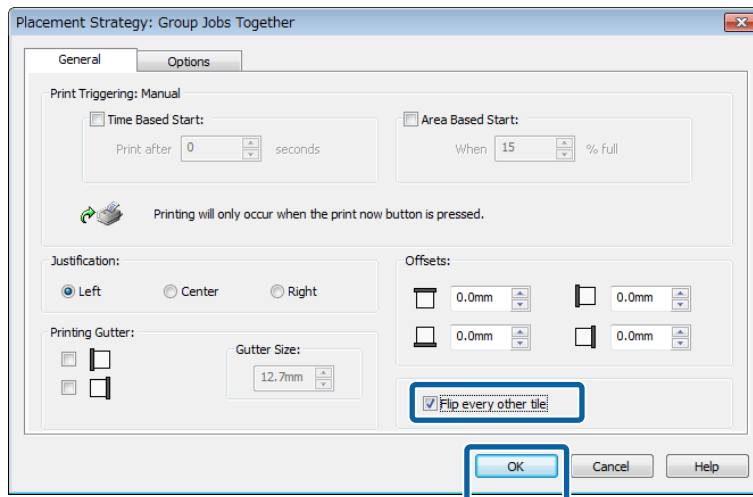


## Troubleshooting

- 4 Click  in **Placement** on the right side of the screen.



- 5 Select **Flip every other tile** and click **OK**.



After doing that, specify the quick set to use for printing, and then print.

## Matching the Print Results to the Displayed Color of Print Data

You need to match the settings of an image processing software (Adobe Photoshop, Adobe Illustrator, etc.) to those of the RIP profile to print the print data in the colors you expect. Do the setting with a method, according to your purpose, from below.

**Note:**

*We recommend doing monitor matching (color management for the screen) for the print color to be as close as possible to the colors displayed on the computer screen. See the manuals for your computer and monitor for details.*

### Checking the print results with a wide color gamut profile in advance on the screen

You can print in a wider color gamut than typical print colors by using the wide color gamut profile (EpsonWideCMYK\_Ver2.icc) that Epson provides. We recommend these when you want to do brightly colored printing, such as for signs. Do the following settings to check the print results before printing.

## Troubleshooting

🔗 “Checking the Print Results with a Wide Color Gamut Profile in Advance on the Screen” on page 38



### Matching your print results to the display colors in the image processing software

If you want to print the display colors that you adjusted with the image processing software as they are, or if you are printing profile-embedded data, use the following procedure to unify the input color settings for the RIP and the settings for the image processing software.

🔗 “Matching Your Print Results to the Display Colors in the Image Processing Software” on page 39



## Checking the Print Results with a Wide Color Gamut Profile in Advance on the Screen

In this section we explain how to change the preview display colors for the print data without changing the settings for Working Spaces to check the print results. The examples used in following explanation are when using Adobe Illustrator CC(2015) in Windows 7.

**Note:**

When selecting the input profile you want in step 4, you can also check the print results if you have set the profile in the RIP you are using to something other than EpsonWideCMYK\_Ver2.

**1**

Right click the Epson special profile for wide color gamut printing (EpsonWideCMYK\_Ver2.icc) that is in the following folder. Select **install**.

%PUBLIC%¥Documents¥Epson¥Control Dashboard¥Profile

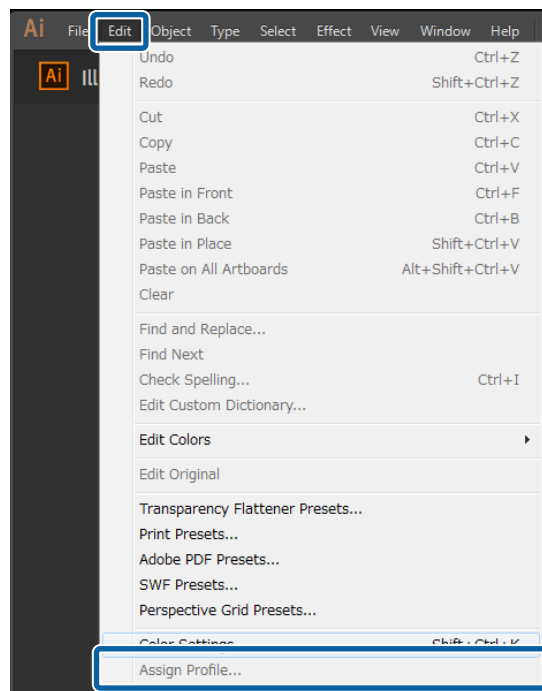
## Troubleshooting

### Note:

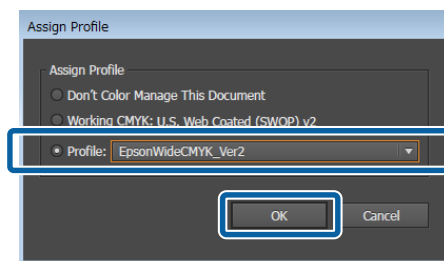
- ❑ If you cannot find the folder, search for the "EpsonWideCMYK" profile.
- ❑ On Mac OS X, copy *EpsonWideCMYK\_Ver2.icc* to the following folder.  
**Source: Library - Caches - Epson - Epson Control Dashboard - Profile**  
**Target: Library - ColorSync - Profile**

**2** Start Adobe Illustrator and open the print data.

**3** Click in the order of **Edit - Assign Profile**.



**4** Select *EpsonWideCMYK\_Ver2.icc* in **Profile**, and then click **OK**.



This update is applied to the display colors in the preview. We recommend closing Adobe Illustrator without saving the print data after you are done checking. If you save the changes, the color input settings for the print data change.

## Matching Your Print Results to the Display Colors in the Image Processing Software

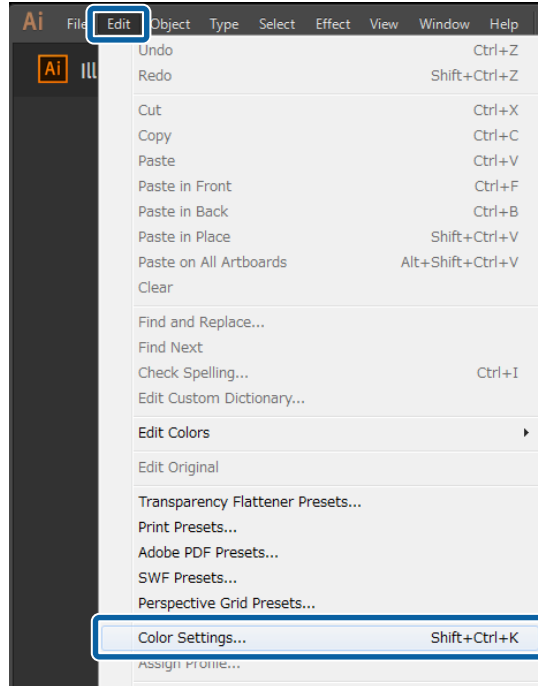
Use the follow procedure to check the display colors of the image processing software and to unify the input color settings for the RIP.

## Troubleshooting

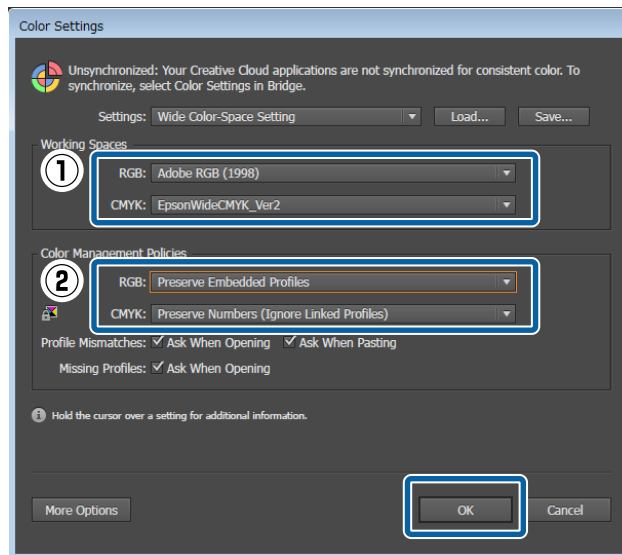
### How to Check the Settings in Image Processing Software

In this section, the examples used in our explanation are when using Adobe Illustrator CC(2015) in Windows 7.

- 1 Start Adobe Illustrator. Click in the order of **Edit - Color Settings**.



- 2 Check the setting for both RGB and CMYK in (1) and (2), and then click **OK**.



### How to Change the Input Color Settings of the RIP

#### For ONYX RIP

Use the following procedure to change the **Profiles** that you set when creating the quick set.

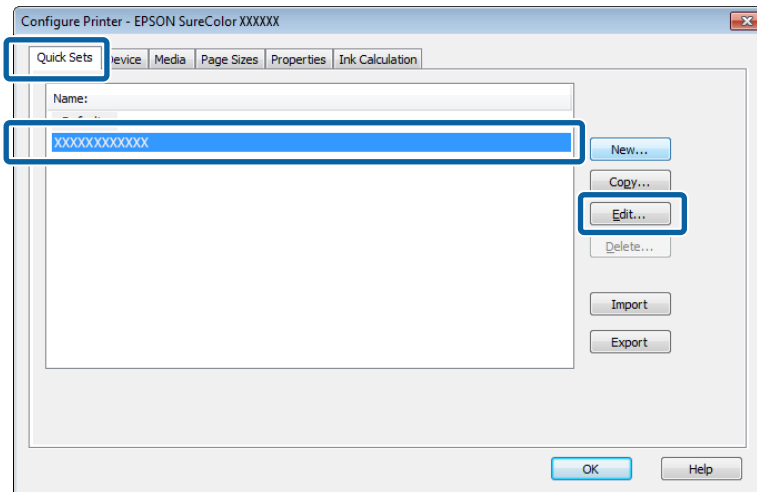


## Troubleshooting

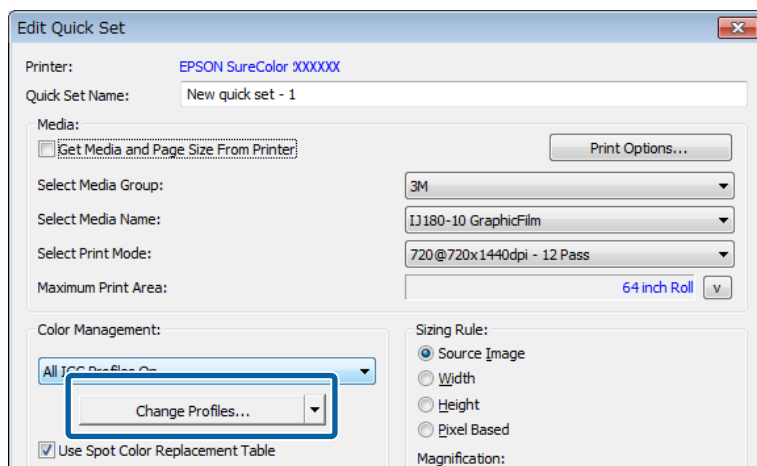
- 1 Start RIP Queue in administrator mode. Click **Configure Printer** in the toolbar.



- 2 Select the quick set to use when printing from the **Quick Sets** tab. Click **Edit**.

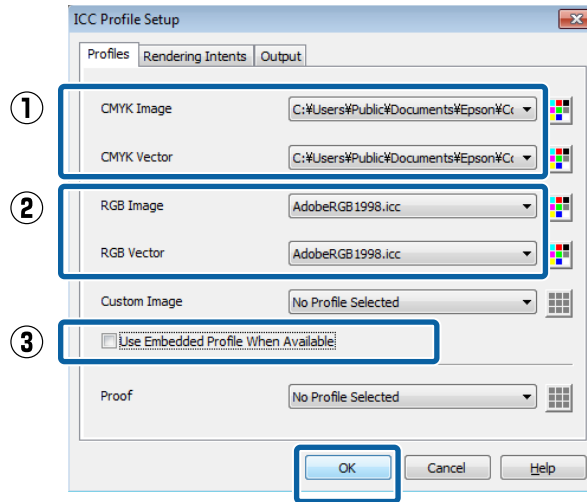


- 3 Click **Change Profiles** in Color Management.



## Troubleshooting

- 4** Change (1) through (3) in the **Profiles** tab to match the settings of the image processing software, and then click **OK**.



(1)	Select the profile* that is selected in <b>CMYK</b> in <b>Working Spaces</b> .
(2)	Select the profile* that is selected in <b>RGB</b> in <b>Working Spaces</b> .
(3)	Select this only when <b>Preserve Embedded Profiles</b> is selected in <b>Color Management Policies</b> .

\* If the profile you want to use does not appear in the selection menu, copy it from the following folder to the input color folder in the **profiles** folder for ONYX RIP.

Windows: System Folder:\Windows\System32\spool\drivers\color

Mac OS X: **Library - ColorSync - Profile**

- 5** Click **OK** on the **Edit Quick Set** screen to save the quick set.

## Matching the Colors to Color Swatch Books and Samples

Matching specific color, such as spot colors (PANTONE, DIC Color, etc.) and corporate colors, using the RIP. See the supplemental manual, *Printing with WH/MS, Matching Specific Colors* (PDF), for details.