

Printing with WH/MS, Matching Specific Colors (Caldera RIP)

Before Using

Before Using

Copyrights and Trademarks

EPSON, EPSON EXCEED YOUR VISION, EXCEED YOUR VISION, and their logos are registered trademarks or trademarks of Seiko Epson.

Microsoft® and Windows® are registered trademarks of Microsoft Corporation.

Mac® and Mac OS® are registered trademarks of Apple Inc.

Adobe®, Illustrator®, Photoshop®, and Adobe® RGB (1998) are either registered trademarks or trademarks of Adobe Systems Incorporated in the United States and/or other countries.

General Notice: Other product names used herein are for identification purposes only and may be trademarks of their respective owners. Epson disclaims any and all rights in those marks.

© 2016 Seiko Epson Corporation. All rights reserved.

Screen Appearance

- ❑ The screens in this manual may slightly differ from the actual screens. Also be aware that the screens may differ due to a difference in the OS or the usage environment.
- ❑ The software RIP screens that appear in this manual use the following screens, unless otherwise specified.
When using Caldera RIP (Ver. 10.2) on Mac OS X Yosemite

OS Notation

Notation for Windows

In this manual, "Windows" is used as a generic name for all OS (operating systems) for Microsoft® Windows®.

Mac OS Notation

In this manual, "Mac OS X" is used as a generic name for all OS (operating systems) for Mac OS X.

Contents

Contents

Before Using

Copyrights and Trademarks.	2
Screen Appearance.	2
OS Notation.	2

Introduction

What to Prepare.	4
Workflow.	6

Processing Print Data

Illustrator Settings.	7
Photoshop Settings.	10

Print Settings in the RIP

Settings in Caldera RIP.	15
----------------------------------	----

Matching Specific Colors

Settings in Caldera RIP.	29
----------------------------------	----

Troubleshooting

WH/MS does not Print.	36
Color and WH/MS Overlapping Parts Do Not Print Correctly.	36
Gradation Skipping Occurs When Printing at High Densities.	37

Introduction

Introduction

When using White ink (hereafter WH) or Metallic Silver ink (hereafter MS) for RIP printing, some additional work, apart from that needed to print with only other color inks, is needed. This manual explains the procedures and workflow for WH/MS printing.

In addition, it also presents the method for matching specific colors, such as corporate colors or spot colors (PANTONE or DIC Color).

See the *Manual for RIP Printing* (PDF), which also has the basic information on RIP printing.

What to Prepare

Software RIP (hereafter RIP)

Use a RIP that supports WH/MS. Check the web site of the manufacturer regarding the information on supported RIP.

Epson Control Dashboard(Dashboard)

Use the latest version of Dashboard. (Update as soon as possible if you are notified of new information.)

Use when importing setting information for the printer or RIP, or download an EMX file for printing with WH/MS. For more information, see the *Manual for RIP Printing* (PDF).

Print data (PDF)

 **Important:**

When printing with WH/MS, it is necessary to do the following process with image processing software before reading the data to be printed with the RIP.

For example, when printing with WH, the RIP does not automatically process WH as the print area by just putting all the print objects on a specified layer named “White” for WH in the print data.


Specify the areas printed in WH/MS as spot colors.

This section explains examples when printing with WH. The white (RGB = all 255 or CMYK is all 0%) in the print data is processed by the RIP as an area in which ink does not need to be applied, the same as when printing with other color inks only. Because of this, the RIP cannot automatically process the parts that look white on screen = WH in print areas even when using a printer that supports WH.

We recommend first splitting the areas to be printed using color ink and the areas to be printed using WH/MS into layers.

Specify the order in which inks are layered (print order). (Adobe Illustrator only)

We recommend splitting the layers for color ink and for WH/MS so you can more easily specify the order in which inks are layered during printing.

Details about processing procedures  [“Processing Print Data” on page 7](#)

Introduction

Image processing software

Use this for processing data to print. In this manual, we explain the procedures for Adobe Illustrator and Adobe Photoshop. In either case, we recommend version CS1 or later.

Introduction

Workflow

Follow the steps below to perform printing work.

For the first time only, see “1. Prepare Printing” in the *Manual for RIP Printing* (PDF).

1. Perform Change Color Mode on the printer.

Proceed to step 2 if you have installed the ink cartridge to be used for printing.

If you have not installed it, be sure to perform **Change Color Mode**. See the *User's Guide* (PDF) for more information.



2. Load media in the printer and select the media setting number.

Load the media correctly and select the media setting number which has been registered to the printer.

See the *User's Guide* (PDF) for more information about loading media and selecting media setting number.



3. Check the data to be printed, and process it for WH/MS printing.

Open the print data in the image processing software. Make such settings as how to layer the ink and the specified spot colors for the areas to print with WH/MS.

Proceed to step 4 if you are using a RIP that can print unprocessed data the same as processed data by using the print settings.

 [“Processing Print Data” on page 7](#)



4. Read the print data to the RIP, and then print it. (The procedure varies depending on the RIP that is used.)

Open the print data in the RIP and select the print mode according to the colors of ink being used and make the print settings.

We recommend that you always check the data in a preview before you start printing.

 [“Print Settings in the RIP” on page 15](#)

Processing Print Data

Processing Print Data

In this section we present the procedure to process the print data, including the parts that are printed with WH/MS, using Adobe image processing software. Use Adobe Illustrator (hereafter Illustrator) to process vector data, in which the object and text are the main thing, as in diagram A. Use Adobe Photoshop (hereafter Photoshop) to process raster data, in which photos and graphics are the main thing, as in diagram B. See the following for the processing procedure.

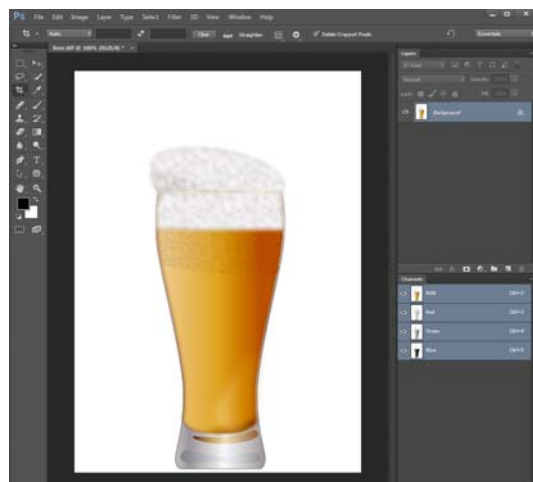
[🔗 “Illustrator Settings” on page 7](#)

[🔗 “Photoshop Settings” on page 10](#)

Diagram A



Diagram B

**Note:**


- When the print data includes no parts that are printed with WH/MS, write the data with the image processing software before processing.
- You can also do WH/MS printing just by doing simple settings while checking the unprocessed data. See the following for details.
 - [🔗 “Settings in Caldera RIP” on page 15](#)

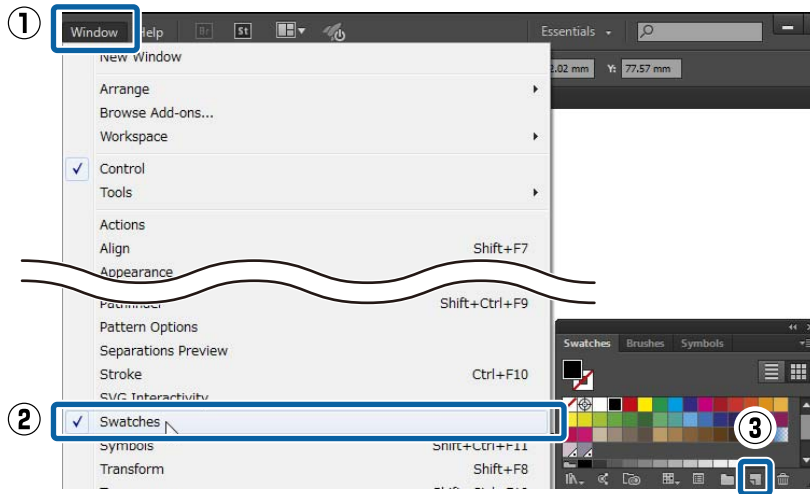
Illustrator Settings

This section uses an example of data that includes WH to explain the data processing procedure of Adobe Illustrator CC(2015) in Windows 7.

- 1** Start Illustrator and open the print data.

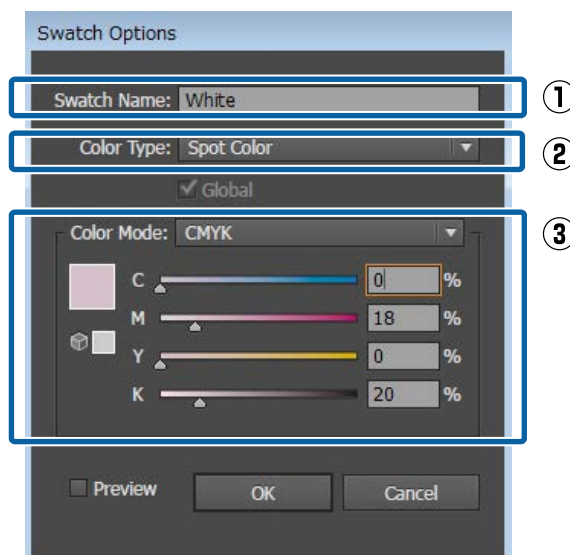
Processing Print Data

2 Click **Window - Swatches**, and then click  (New Swatch).



3 Refer to the following table and specify the color to be used for areas printed with WH, and then click **OK**.

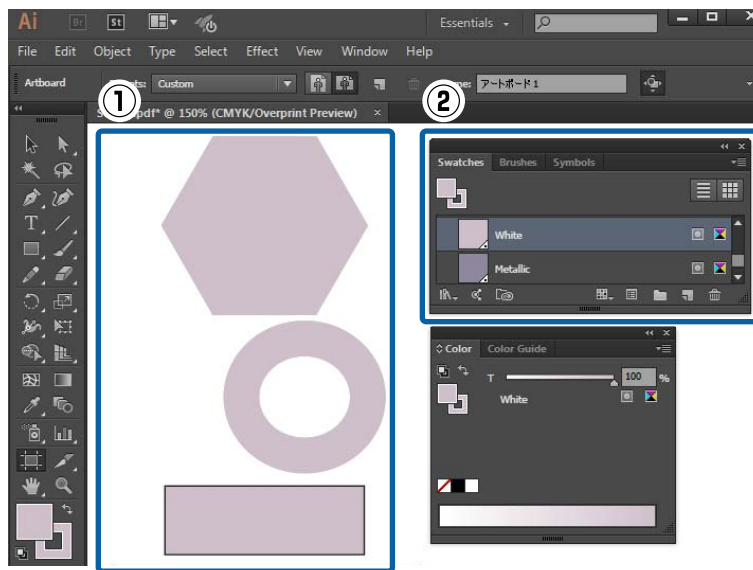
(1)	Swatch Name	Input the name of the spot color in single-byte characters. We recommend using names that allow you to identify the color of the ink, such as "White" for printing with WH and "Metallic" for printing with MS. Use the names that are assigned here when making print settings in the RIP. Keep a record of the names, so you do not mistake the upper and lower cases.
(2)	Color Type	Select Spot Color .
(3)	Color Mode	Select CMYK and specify the color to print. We recommend specifying a bright color that is not used in the image for checking because it is difficult to identify the background color if you use white (all CMYK at 0%). (In the example diagram, the color is set as a very light ash gray.)



In the following, the parts of the image that are specified with the color from the swatch are printed in WH.

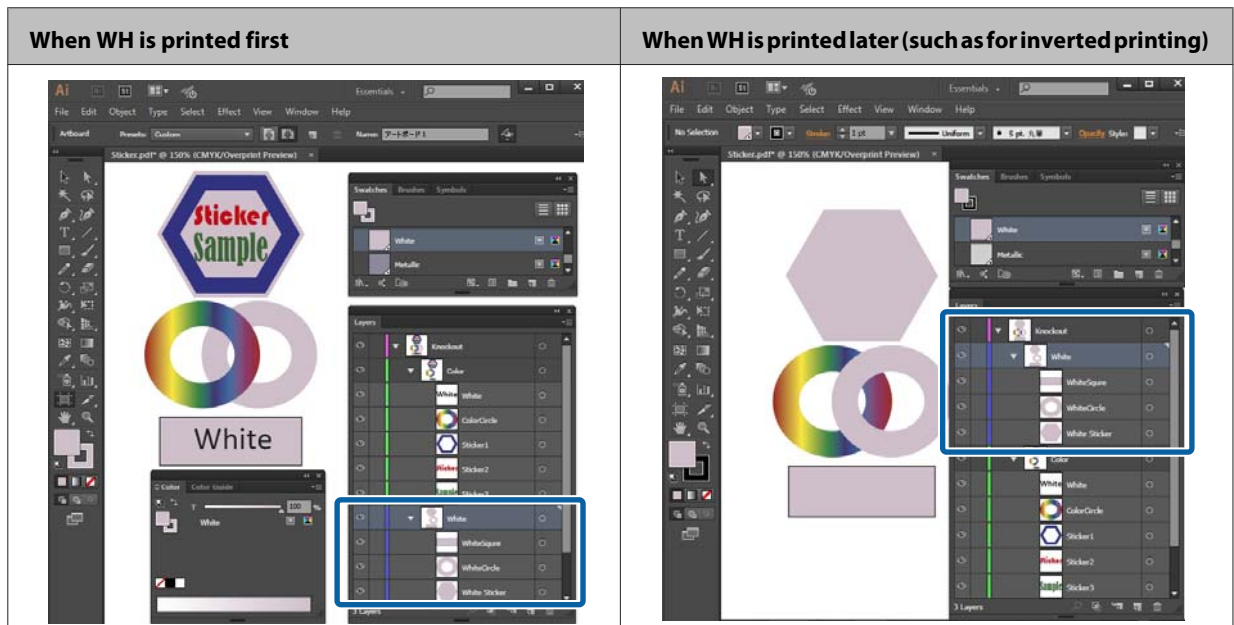
Processing Print Data

- 4** Select the objects to print with WH, and specify the spot color you saved to the swatch in step 3 to color them.



- 5** Click **Window - Layer**, and then specify the order of the layers of ink (print order).
When all of the objects are on the same layer, the lower objects are printed first.

When you divide the layers on which there are objects printed in WH, the lower layer are printed first.



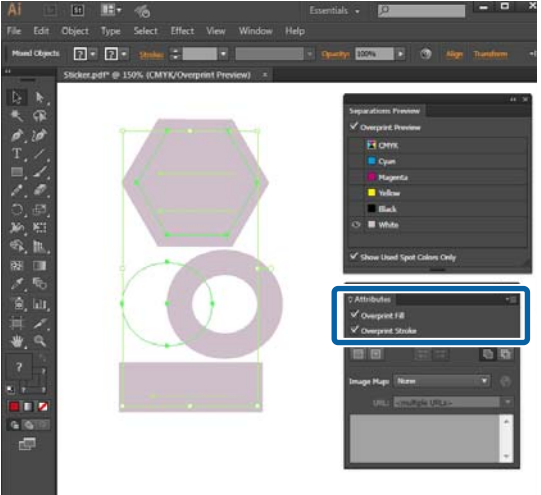
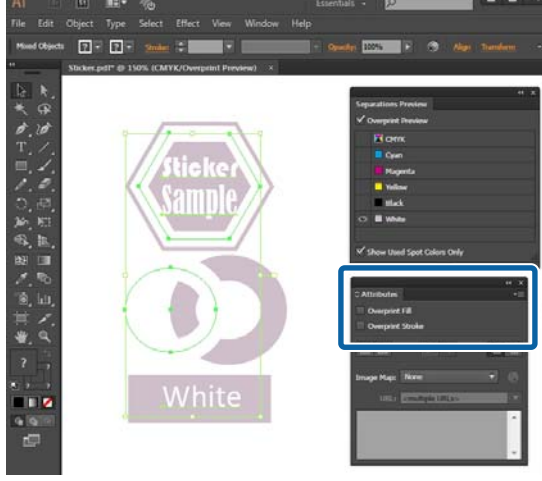
Note:

Depending on the RIP you are using, the print order set in the RIP may have priority over the print order that is decided here. See the manual supplied with the RIP for more details.

- 6** Click **Window - Attributes**, and then make the settings according to the print results of the parts where objects overlap.

Refer to the following table and make the settings while the object that will be on top when they overlap is selected.

Processing Print Data

When checked	When not checked
<p>The shapes of the objects are printed as they appear using colors or WH according to the order of layers. (Overprint is enabled.)</p> 	<p>When they overlap, the parts on the lower layer are not printed. (Overprint is disabled.)</p> 

Note:

- ❑ The diagrams in the table are when **Overprint Preview** is selected in **Separations Preview**, and the CMYK plates are not displayed, so it is easy to understand the results of printing with WH. **Separations Preview** is displayed by clicking **Separations Preview** in the **Window**.
- ❑ With **Overprint**, you can get the same effect as with **Transparency**. (To overprint, select **Multiply**. And, to not overprint, select **Normal**.) For more information, see the online help for Illustrator.

7 When you have set all the objects the same way, save the data in PDF format.



In **Compatibility**, we recommend **Acrobat 4 (PDF 1.3)** or **Acrobat 5 (PDF 1.4)**.

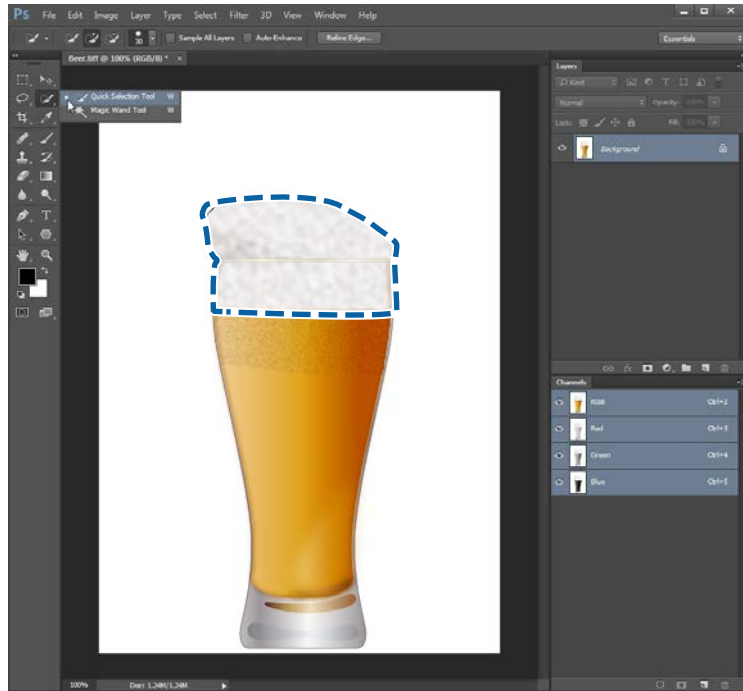
Photoshop Settings

This section uses an example of data that includes WH to explain the data processing procedure of Adobe Photoshop CC(2015) in Windows 7.

- 1** Start Photoshop and open the print data.
- 2** Click **Window - Layer**.
- 3** Right click on a layer that includes parts that are printed in WH, and then click **Duplicate Layer**.
The image is copied and there are now two image layers.
- 4** On the **Layer**, select the original image layer, and then delete the part that is printed in WH.
There are two ways to select only the part that is printed in WH. For more information, see the online help for Photoshop.

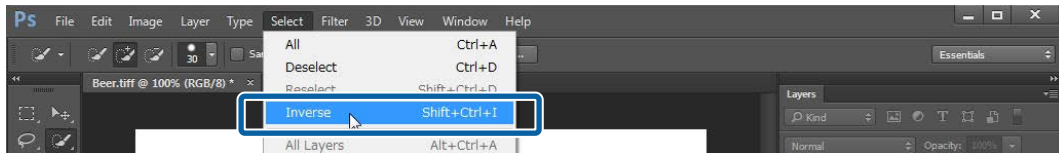
Processing Print Data

- ❑ Use the  (Quick Selection tool) or  (Magic Wand tool) for selecting things.
- ❑ After using the **Select** tool to select an area that includes WH, use **Select - Color Range** to specify the color for WH.




- 5** On the **Layer**, select the copied layer and click **Select - Inverse**, and then delete all the parts except those printed in WH.

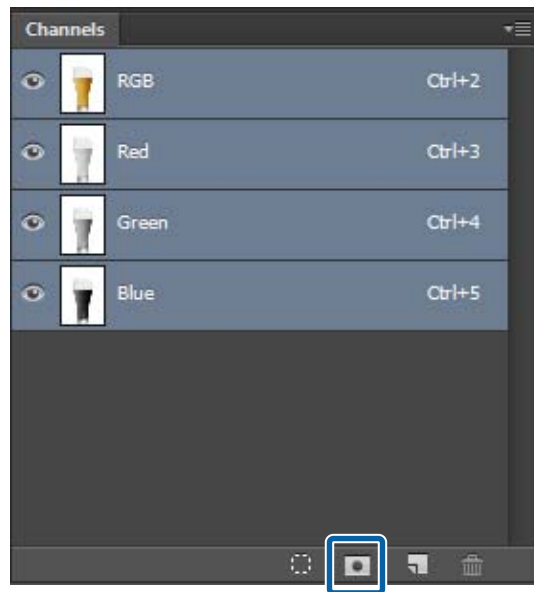
The parts that are not printed in WH disappear so that parts where there is nothing are selected.



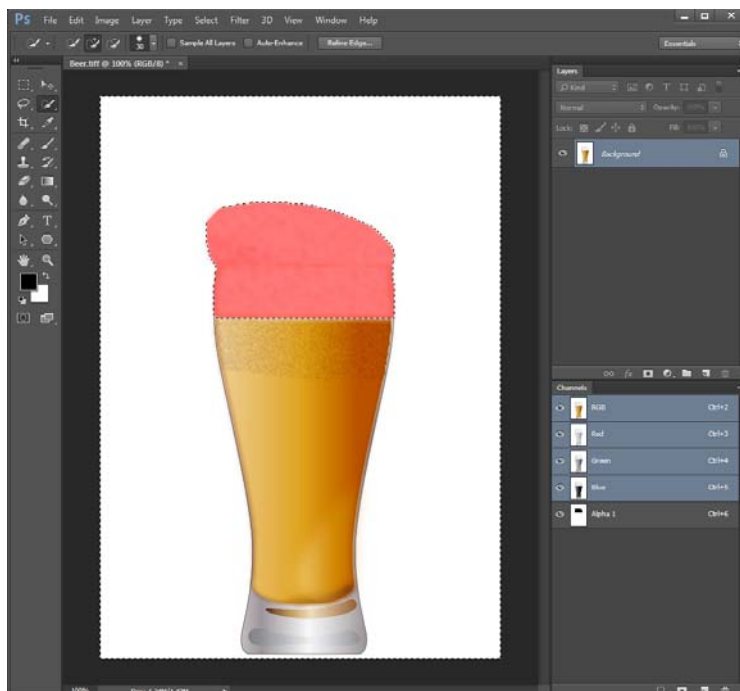
- 6** Click **Window - Channel**.

Processing Print Data

7 Click  (Save selection as channel).

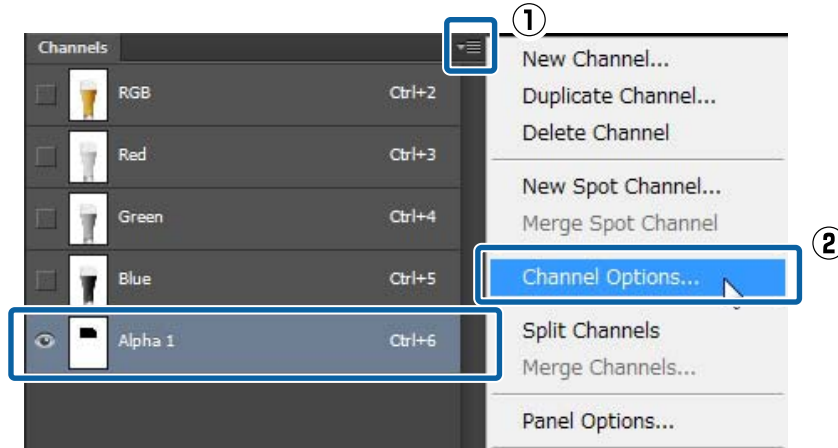


The parts that are printed in WH are masked. (The red colored parts are the masked areas.)



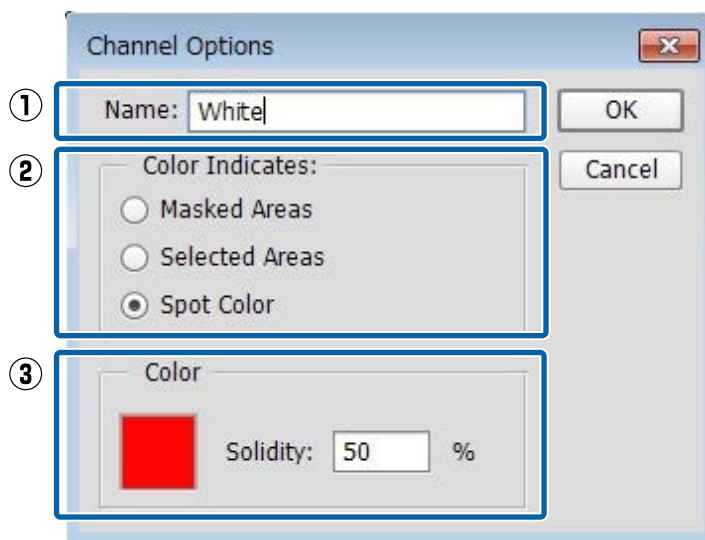
Processing Print Data

8 While **Alpha channel** is selected click the menu and then click **Channel Options**.



9 Refer to the following table and set (1) to (3), and then click **OK**.

(1)	Name	Input the name of the channel in single-byte characters. We recommend using names that allow you to identify the color of the ink, such as "White" for printing with WH and "Metallic" for printing with MS. Use the names that are assigned here when making print settings. Keep a record of the names, so you do not mistake the upper and lower cases.
(2)	Color Indicates	Select Spot Color .
(3)	Color	Specify the color in which to display parts that are printed in WH. (In the example diagram, the red colored parts are printed in WH.)



When printing the image on this layer using only WH/MS:

Hide the copied layer so you do not use color ink unnecessarily when printing. (Make the setting while the copied layer is selected using **Window - Layer**.) Only the alpha channel remains and printing can be done using only WH/MS.

When color ink overlaps with WH/MS:

Proceed to step 10.

Processing Print Data

10

Save the data in PDF format.

In **Compatibility**, we recommend **Acrobat 4 (PDF 1.3)** or **Acrobat 5 (PDF 1.4)**.

Print Settings in the RIP

Print Settings in the RIP

When printing with WH/MS, it is necessary to check the print data in the RIP as you make the settings. We do not recommend printing without checking the print data as in hot folder printing.

See the following for details.

Settings in Caldera RIP

 **Important:**

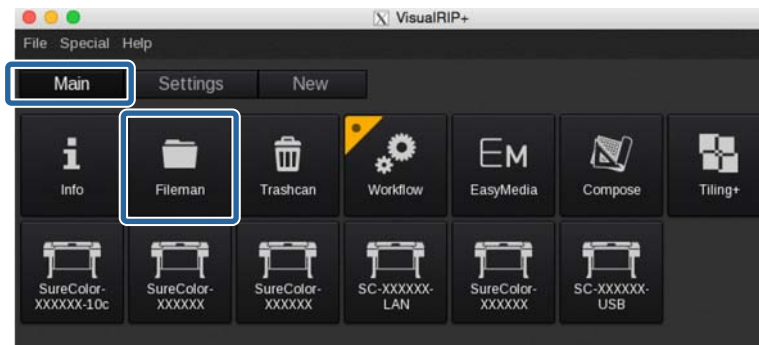
See the *Manual for RIP Printing (PDF)* before you start the following tasks, from “Install and Connect” to “Create Configuration (Print Settings)”.

This section explains the procedure for printing in Caldera RIP (Ver. 10.2) on a Mac OS X.

- 1 Start Caldera RIP.

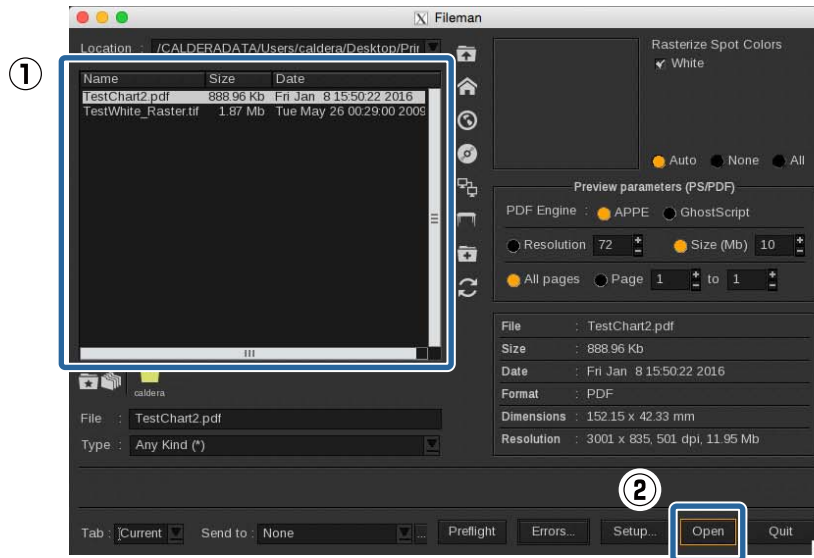


- 2 In the **Main** tab, click **Fileman**.



Print Settings in the RIP


3 Select a file to print, and then select **Open**.

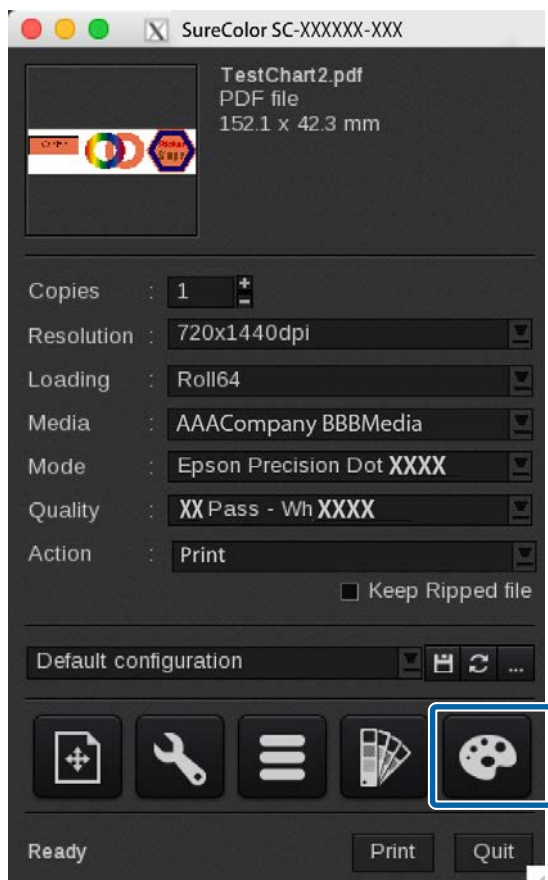


4 Drag and drop an image from **Default** to the preview area in the printer dialog box.



Print Settings in the RIP

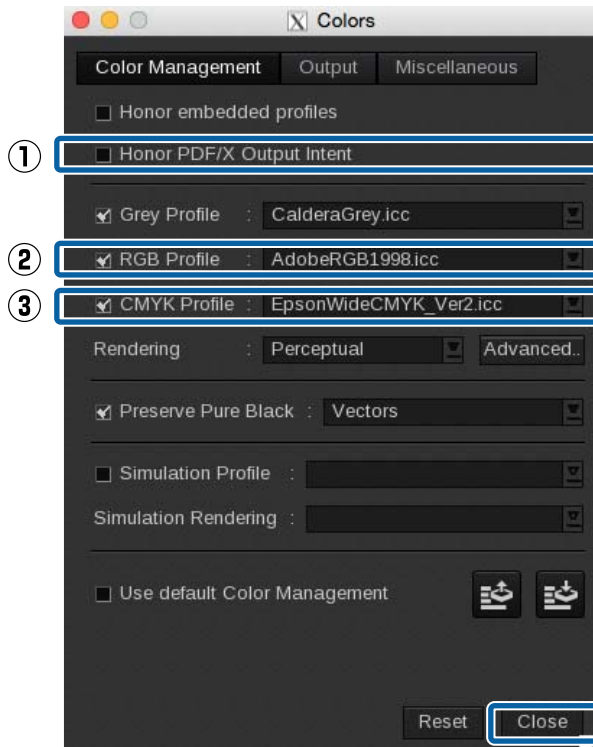
5 Click  (Colors) in the printer dialog box.



6 Refer to the following table and set (1) to (3) in the **Color Management** tab, and then click **Close**.

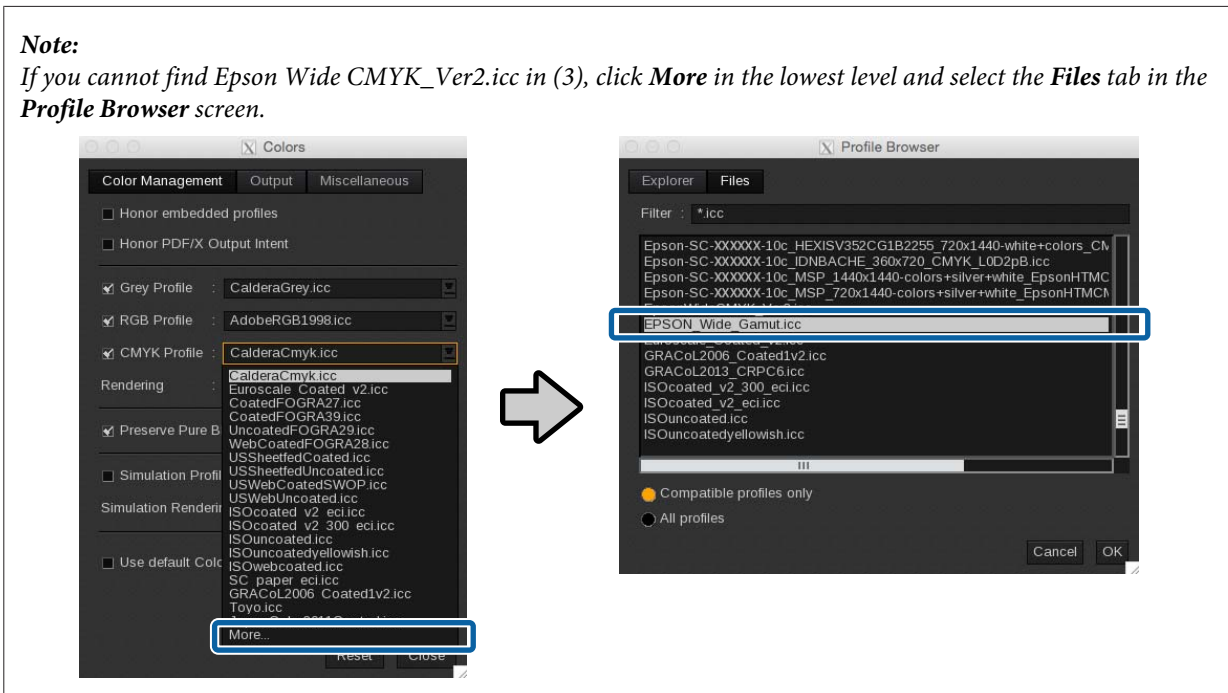
	For printing with a wide color gamut	For general printing
(1)	Not checked	Checked
(2)	AdobeRGB1998.icc	sRGB.icc, etc.
(3)	EpsonWideCMYK Ver2.icc	Select general profile for printing.

Print Settings in the RIP



Note:

If you cannot find *Epson Wide CMYK_Ver2.icc* in (3), click **More** in the lowest level and select the **Files** tab in the **Profile Browser** screen.



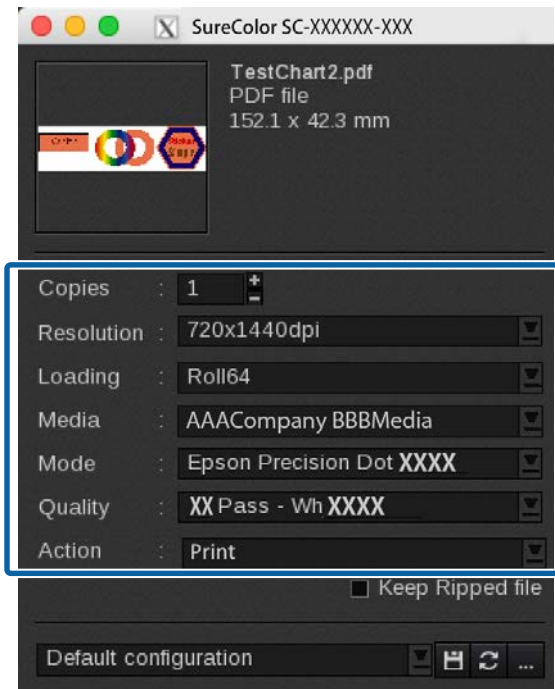
Refer to the following also when matching spot colors.

 [“Matching Specific Colors” on page 29](#)

Print Settings in the RIP

7 Do the print settings in the printer dialog box.

The white text settings are the recommended settings. Print quality cannot be guaranteed for settings other than the white text.



See the following table for a summary of the setting items. (See the manual supplied with the RIP for more details.)

Copies	Specify the number of copies.
Resolution	Specify the print resolution for the image.
Loading	Select the width of the media that has been loaded in the printer.
Media	Select the type of the media that has been loaded in the printer.
Mode	If you are using print information that is imported from an EMX file, select a setting that includes Epson Precision Dot CMYK in its name.
Quality	Select this according to the number of print passes and layers. The recommended settings for each print pass are indicated by an "*" (asterisk). See the supplementary table for details.
Action	Normally, select Print . Printing starts automatically when the settings are complete.

How to Read Quality

The following settings are for 32 passes bidirectional printing of WH and color. Descriptions of the settings from ① to ④ are shown in the following table.

32 Pass -
 Wh -
 2L -
 Bid
 ① ② ③ ④

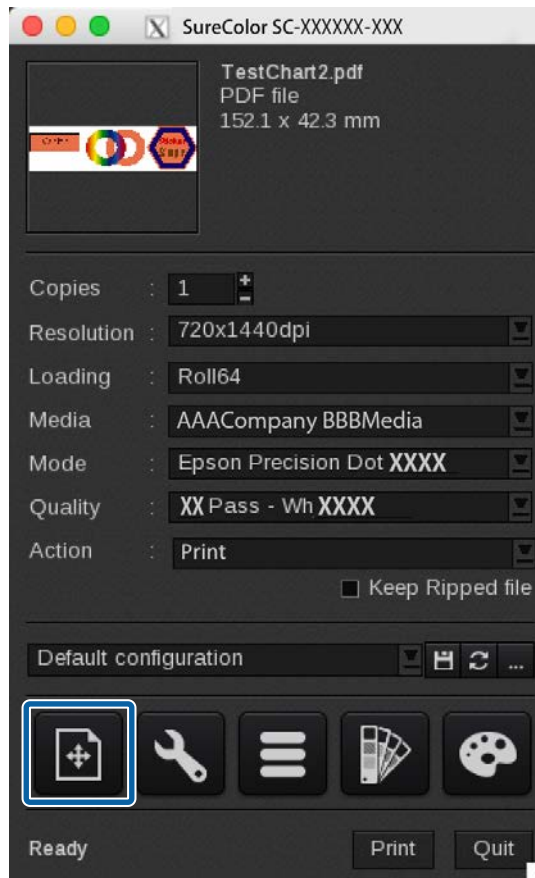
①	Indicates print passes (how many times printing is split for one interval). The higher the number the better the print quality, but the printing speed decreases. Depending on the media you are using, the term High Quality may appear following the name of the media. This setting helps prevent the occurrence of uneven density and banding from the setting of the same number of passes, but it reduces the print speed.
----------	--

Print Settings in the RIP

2	<p>Indicates spot colors used for printing. Select from those below.</p> <ul style="list-style-type: none"> <input type="checkbox"/> When printing with WH and color ink that overlap: Wh <input type="checkbox"/> When printing with WH and color ink at the same time, that do not overlap: (Wh) <input type="checkbox"/> When printing with MS (either overlapping or not): Ms <input type="checkbox"/> When printing with only color ink and a low number of print passes: mode that does not have 2 or 3. <input type="checkbox"/> When printing with only color ink and a high number of print passes: mode that has (Wh) in 2 that does not have 3.
3	<p>Indicates number of print layers. When printing with WH/MS and color ink at the same time, that do not overlap, select a mode that does not have 3. When printing with WH/MS and color ink that do overlap, select 2L or 3L*. (3L can be selected only when printing with WH.) When you select 3L, you also need to select how the print results appear.</p> <ul style="list-style-type: none"> <input type="checkbox"/> Printouts that appear correct from just either the front or back side: 1 Way <input type="checkbox"/> Printouts that appear correct from both sides: 2 Way
4	<p>Indicates the method in which printing is done. The printhead prints while moving both left and right; or the printhead prints while moving in only one direction. You can select one of the following.</p> <ul style="list-style-type: none"> <input type="checkbox"/> Bid: The print head prints while moving both left and right, so printing can be done quickly. <input type="checkbox"/> Unid: Printing is done only in one direction. The print quality increases, but the printing speed decreases.

* Depending on your country or region, you may not be able to select 3L. For more details, contact your dealer or Epson Support.

8 Click  (**Page Setup**).



Print Settings in the RIP

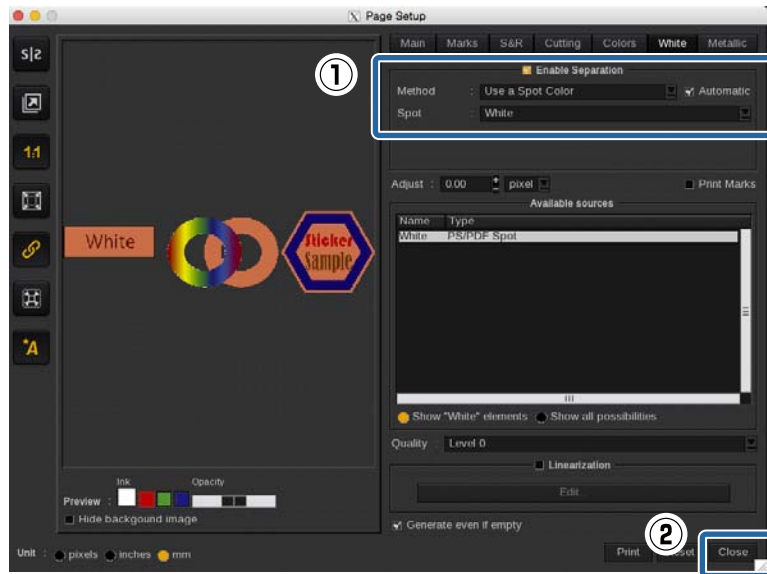
9 Select the **White** or **Metallic** tab and select **Enable Separation**.



Note:

Printing may not be done correctly if **Enable Separation** is selected in both the **White** and **Metallic** tabs. Clear the selections in tabs for colors of ink that are not being used for printing.

10 If necessary for the print data, set (1) and then click **Close**.



Processed print data

Method	Select Use a Spot Color . Select Automatic to automatically set Spot .
Spot	Select a name (White or Metallic) that is saved in a spot color swatch (Illustrator) or spot color channel (Photoshop).

Unprocessed print data (when you want to specify WH/MS print areas in the RIP settings)

Method	Select Generate from CMYK data .
Computation	Select one of the following as the part you want to print with WH/MS. <input type="checkbox"/> Parts that have images and objects: Generate where there is some ink <input type="checkbox"/> Parts that do not have images and objects: Generate where there is no ink
Density	Set the ink density for WH/MS.

Unprocessed print data (when WH/MS is printed all over)


Method	Select Fill page coverage .
Density	Set the ink density for WH/MS.

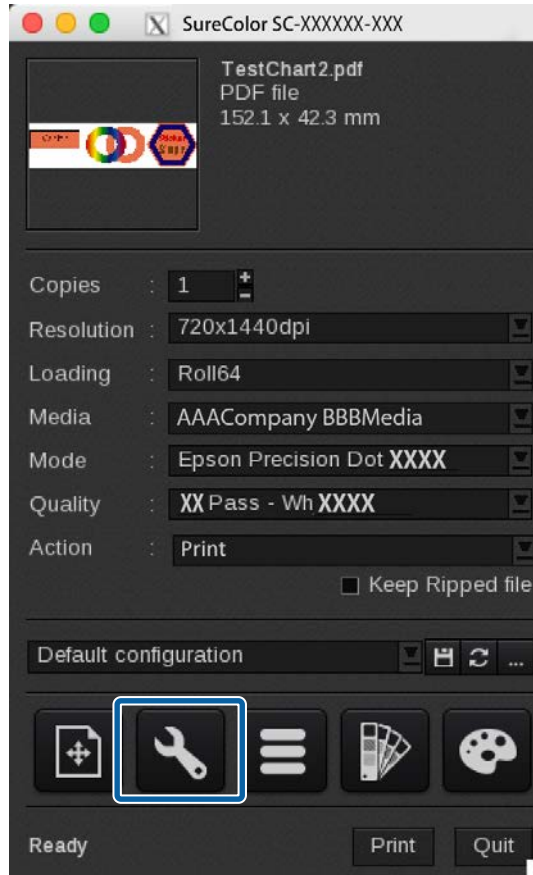
Print Settings in the RIP

Note:

When printing something other than PDF format data in the channel for printing WH/MS, select **Use Extra Channel** for **Method** and then select the ink color for **Channel**. See the manual supplied with the RIP for more details.

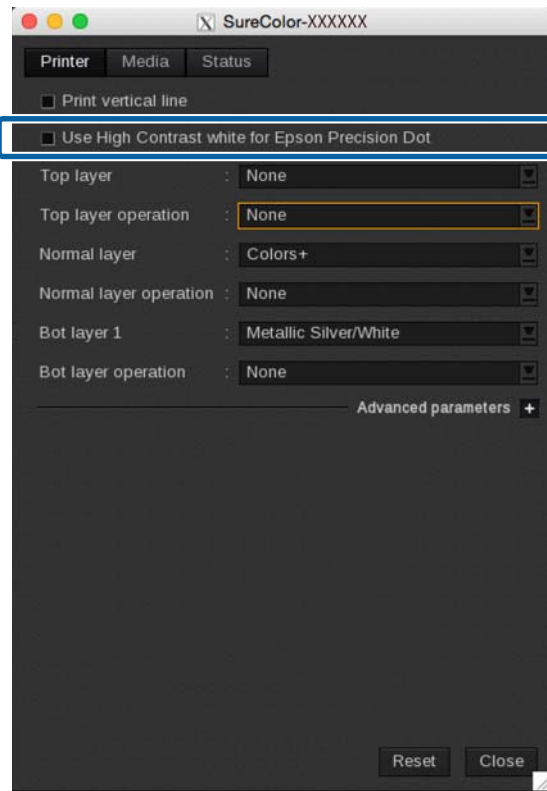
11

Click  (Advanced settings).

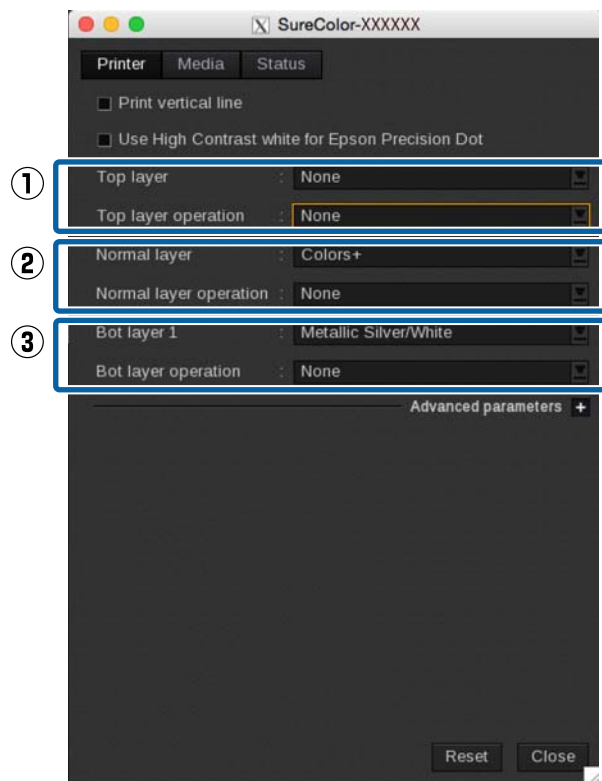


Print Settings in the RIP

- 12** Check that the following item is not selected in the Printer tab.
Select this only when the print data has parts that are printed all over (solid printing) with WH.



- 13** Set the print order and ink colors used for each layer.
The settings vary depending on the number of print layers. See the following for details.



Print Settings in the RIP

When printing only in color ink or when printing colors and WH/MS without overlapping

Select **None** for everything in (1) and (3). Set (2) according to the following table.

(2)	Normal layer	Colors+
	Normal layer operations	The setting is different from where to see the print results. <input type="checkbox"/> Front: None <input type="checkbox"/> Back: Mirrored (when printing inverted)/ None (when printing normally)

When 2L is selected

The settings vary depending on the print order of WH/MS and color ink.

When printing WH/MS on top (when the print results can be seen from the back side)

Set (1) and (2) according to the following table. Select **None** for everything in (3).

(1)	Top layer	Metallic Silver/White
	Top layer operations	None
(2)	Normal layer	Colors+
	Normal layer operations	Mirrored (when printing inverted)/ None (when printing normally)

When printing WH/MS on bottom (when the print results can be seen from the front side)

Select **None** for everything in (1). Set (1) and (2) according to the following table.

(2)	Normal layer	Colors+
	Normal layer operations	None
(3)	Bot layer	Metallic Silver/White
	Bot layer operations	None

When 3L is selected

The settings vary depending on the print order of WH and color ink.

When printing color ink two times with WH in between (when the print results can be seen from both sides)

(1)	Top layer	Colors
	Top layer operations	None
(2)	Normal layer	Metallic Silver/White
	Normal layer operations	None
(3)	Bot layer	Colors
	Bot layer operations	Mirrored

Print Settings in the RIP

- When printing WH two times overlapping on color ink (when the print results can be seen from the back side)**

(1)	Top layer	Metallic Silver/White
	Top layer operations	None
(2)	Normal layer	Metallic Silver/White
	Normal layer operations	None
(3)	Bot layer	Colors
	Bot layer operations	Mirrored (when printing inverted)/ None (when printing normally)

- When printing WH two times overlapping under color ink (when the print results can be seen from the front side)**

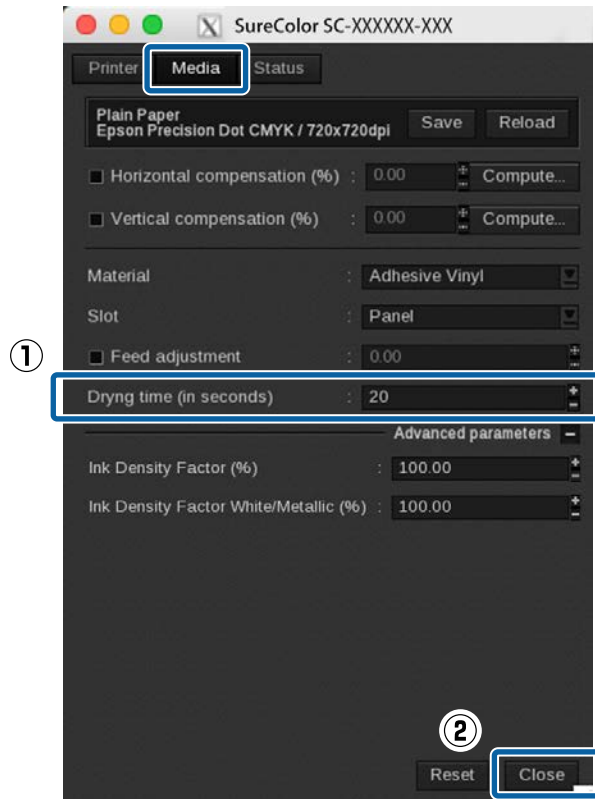
(1)	Top layer	Colors
	Top layer operations	None
(2)	Normal layer	Metallic Silver/White
	Normal layer operations	None
(3)	Bot layer	Metallic Silver/White
	Bot layer operations	None

Print Settings in the RIP

14

In the **Media** tab, set **Drying time (in seconds)** and click **Close**.

Set the drying time in which additional drying is done by the drying fan and heater after a job has finished printing.

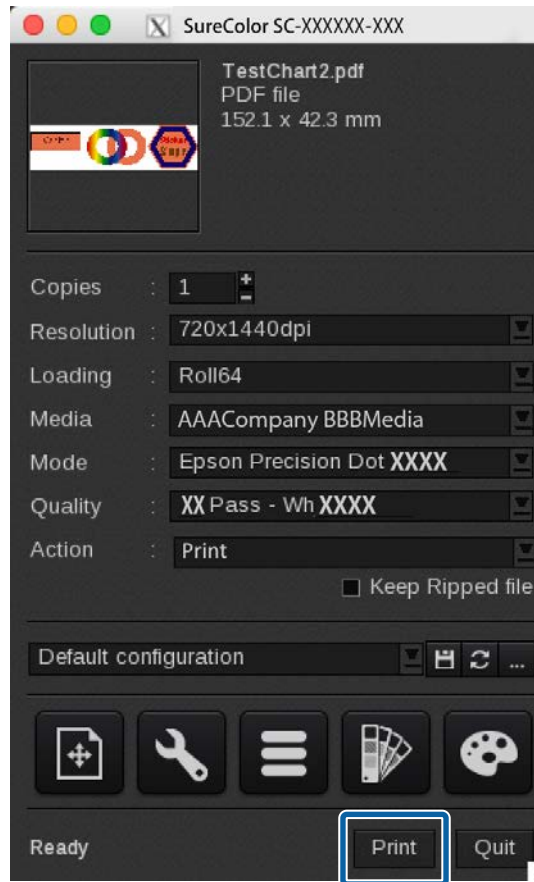


Note:

- ❑ When printing in layers of color inks and WH/MS, if the printed surface is rolled up before it has sufficiently dried, the printed surfaces may stick together. The appropriate drying times vary depending on the media you are using. However, we recommend setting a little longer time than when printing with color ink only.
- ❑ Set the **Drying Time Per Pass** on the control panel menu of the printer for banner print jobs (length rolled before additional drying after a print job). See the User's Guide (PDF) for more information.


Print Settings in the RIP

- 15** When all the settings are complete, click **Print** in the printer dialog box. Printing starts automatically.

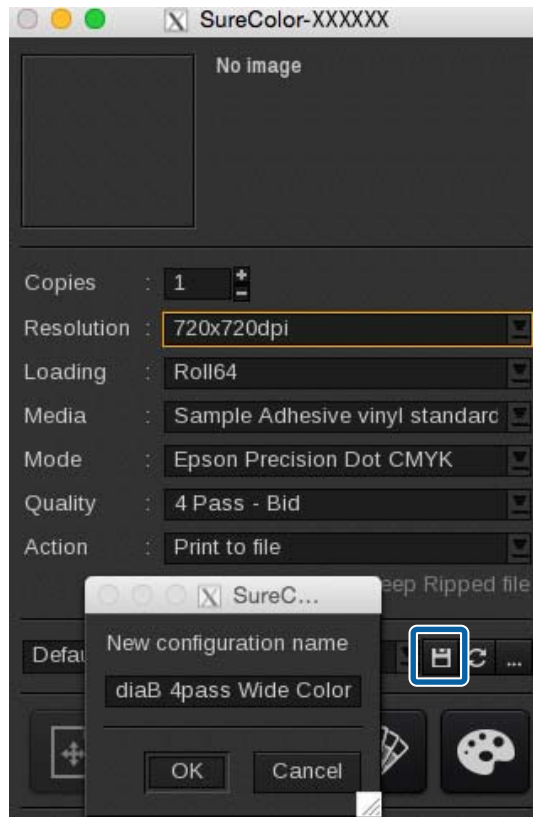


Print Settings in the RIP

Note:

Click  to save the setting. Then you can print by recalling the settings next time.

We recommend using a name for the settings that is easy to understand for other people that are printing something.



Matching Specific Colors

Matching Specific Colors


When matching specific colors, such as spot colors or corporate colors, determine the optimum value by comparing the target to the printed color sample (Color Books) created with a RIP. The target differs according to the color being matched.

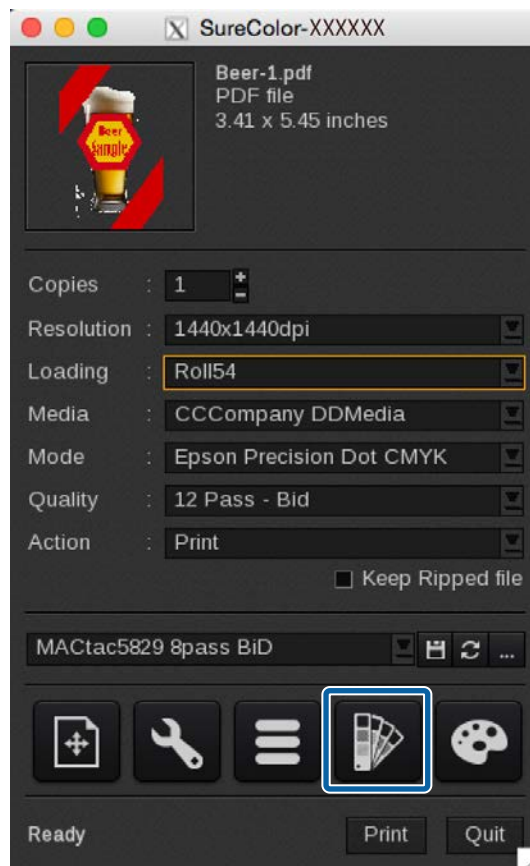
Spot color*	Commercially available color books, such as PANTONE and DIC
Other than spot colors	Actual printed materials and sample goods

* Indicates named colors specified in the swatch library of the image processing software.

See the following for how to do the settings.

Settings in Caldera RIP

1 Click  (Spot Colors) in the printer dialog box.

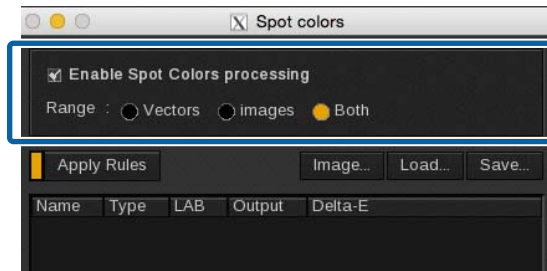


2 Select **Enable Spot Colors processing**, and then specify the area to match colors in **Range**.

- Vectors:** Only areas that include vector data, such as objects or text
- Images:** Only areas of raster data, such as photos

Matching Specific Colors

Both: Both Vectors and Images

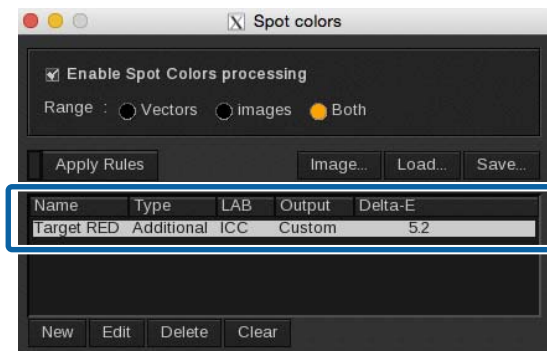


3

Select and register the target color according to the matching color.


Spot color

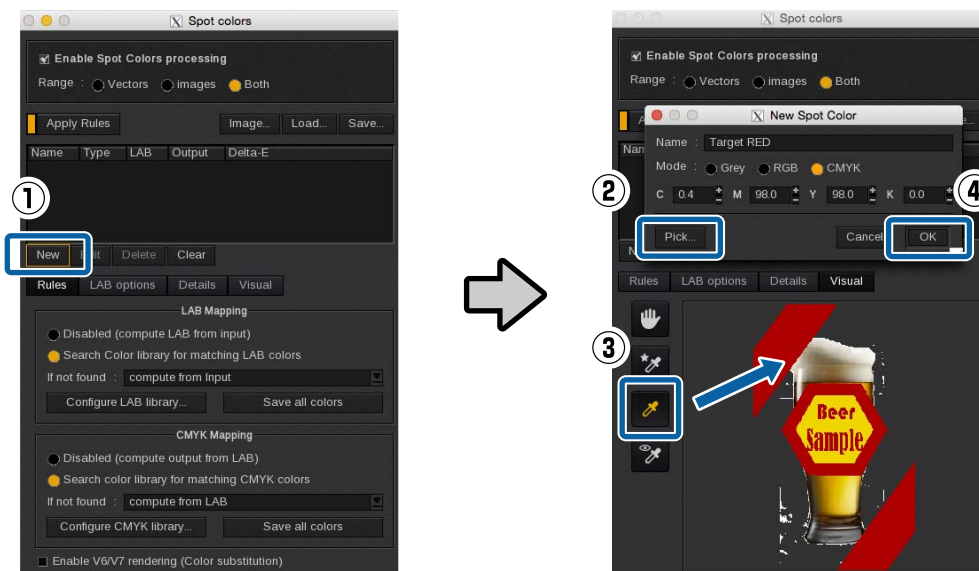
Select a name for the spot color. If the data contains multiple spot colors, select the correct colors for matching colors.



Other than spot colors

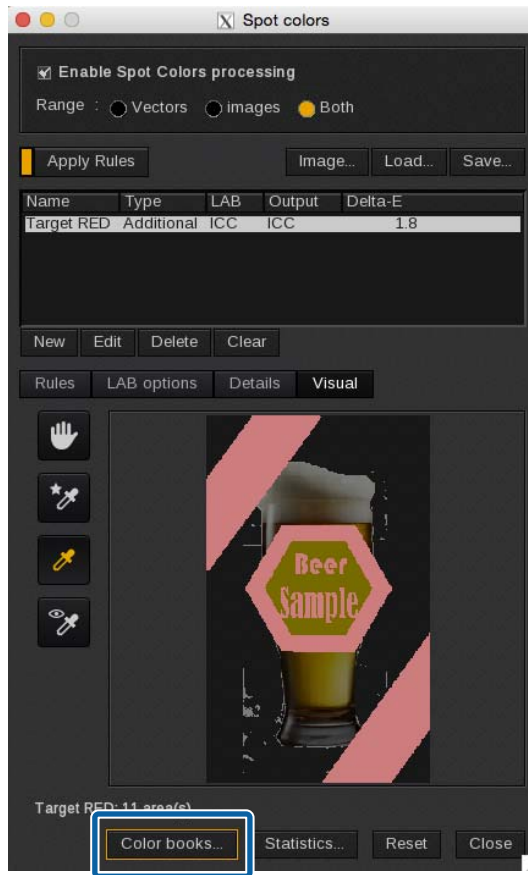
Use the following procedure to register colors for matching colors as new spot colors.

- (1) Click **New**.
- (2) Click **Pick** in **New Spot Color**.
- (3) Click  in **Preview**, then select the color for the matching color.
- (4) Click **OK** in **New Spot Color**.



Matching Specific Colors

4 Click **Color books**.

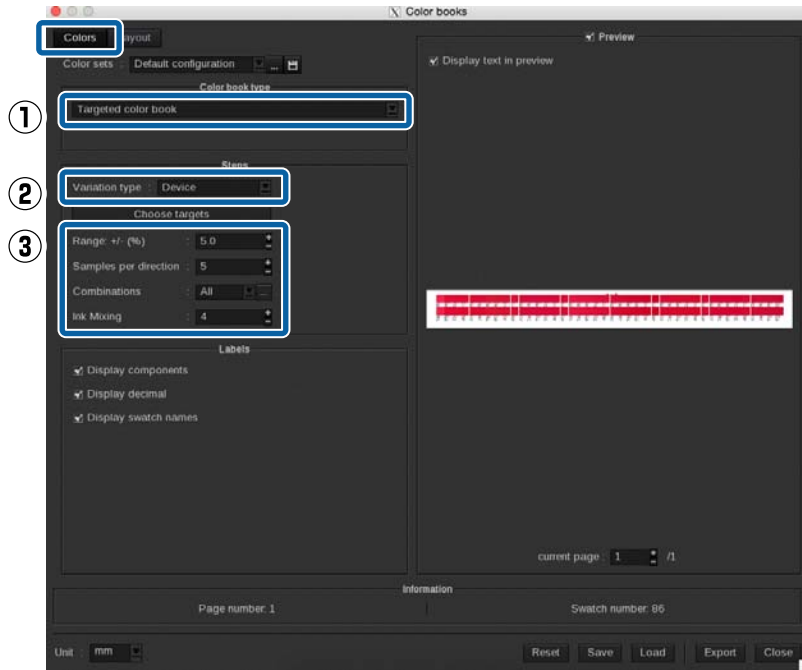


5 Click the **Colors** tab, and then use the following procedure to set the color swatch book data.

- (1) Select **Targeted color book**.
- (2) Select from **Device** (input CMYK color) or **LCH** (Lightness, Chroma, and Hue) for the elements in which to change values. (The following explanation uses an example of when **Device** is selected.)
- (3) Refer to the following table to set the various items. See the manual supplied with the RIP for more details.

Range	Set the percentage (positive or negative) to change the value.
Samples per direction	Set the number of patches to create per line.
Combinations	Select the combinations of colors to change. When you select Custom and click ..., you can select detailed combinations.
Ink Mixing	Select the number of colors for which to change values.

Matching Specific Colors

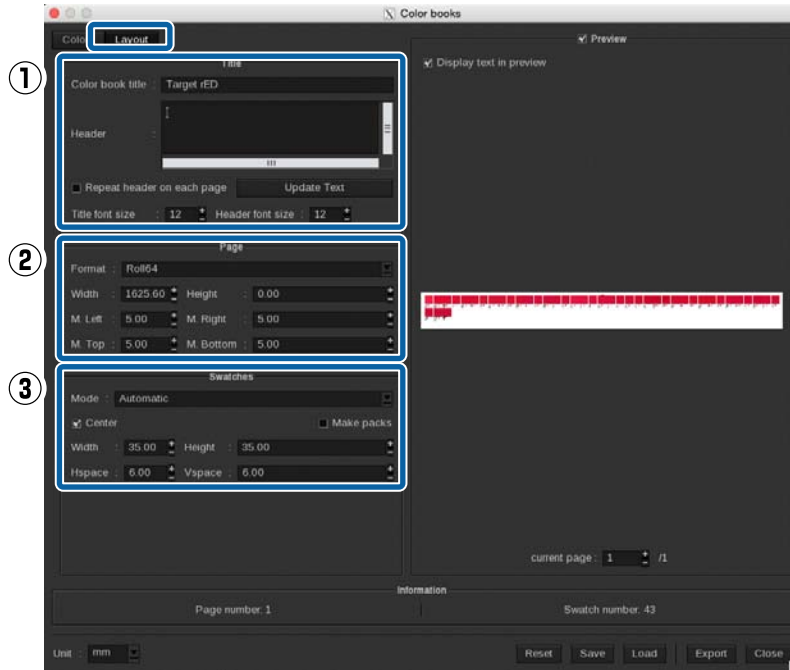


6

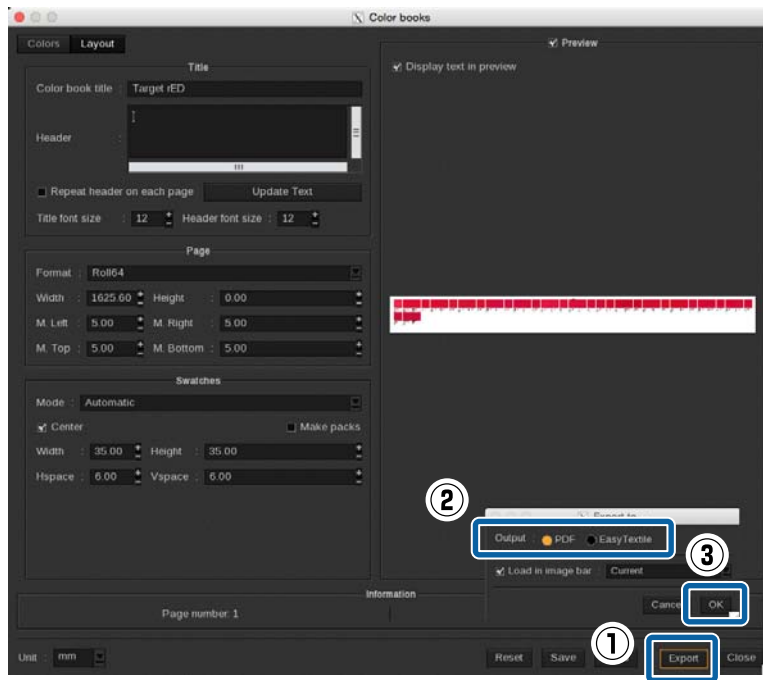
Refer to the following table to set the print settings for the patches in the **Layout** tab. See the manual supplied with the RIP for more details.

(1)	You can print the name of the color book, comments and other information in the header. Select Repeat header on each page to print the header on each page.
(2)	<input type="checkbox"/> Format: Select the width of the roll paper on which to print the color patches. <input type="checkbox"/> Width: Specify the print width per one line of color patches. <input type="checkbox"/> M. Left - M. Bottom: Set the top, bottom, left, and right margins.
(3)	<input type="checkbox"/> Width/Height: Set the height and width of the patch. We recommend over 20 mm. <input type="checkbox"/> Hspace/Vspace: Specify the vertical and horizontal margins between the patches. <input type="checkbox"/> Mode: Normally automatically set to 1 line. Select Center to print the patches in the center of the media. Select Make packs to block the patches for each element that has a changed value when printing them.

Matching Specific Colors

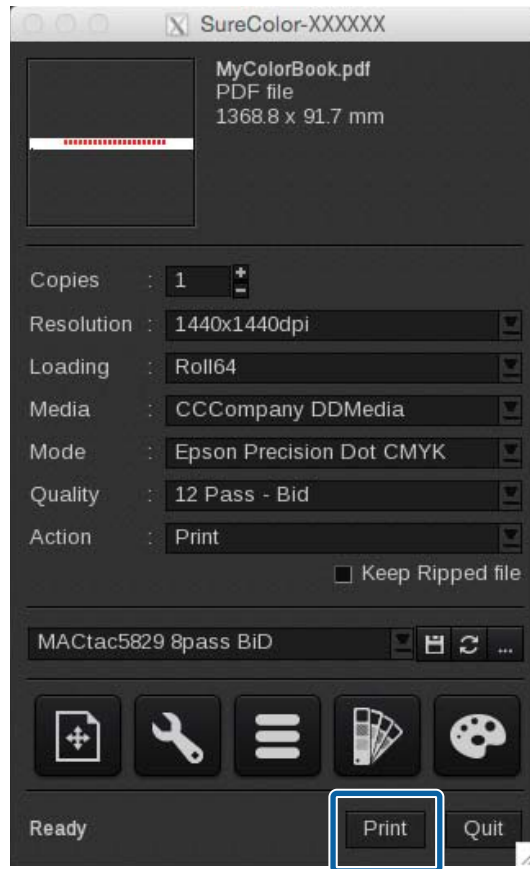


7 Click **Export** and then select **PDF** in **Output** and then click **OK**.



Matching Specific Colors

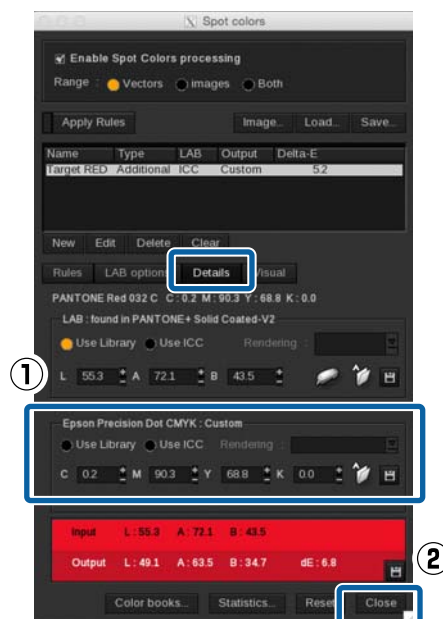
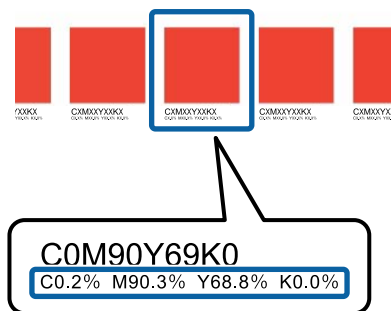
8 Click **Print** in the printer dialog box.



9 Compare the target (color books, samples) with the printed color patches and search for the patch with the closest color.

If you cannot find a suitable color, return to step 4, change the range and number of patches, and recreate and print the color patches. Repeat steps 4 to 8 until you find a suitable color.

10 In the **Details** tab of Spot Colors for the original print data, input the CMYK values (detailed values on the bottom row) that you found in step 9, and then click **Close**.



Matching Specific Colors

 **Important:**

When color matching, all of the colors that are the same as the specified color in the print data will be replaced. Be sure to check on the preview screen that unintended parts have not also been replaced.

11

Print the actual data and check the color matching results.

If you would like a more precise match, start again from step one and find another similar color.

Troubleshooting

WH/MS does not Print

Check the following.

Was the print data processed beforehand?

When printing with WH/MS, processing is necessary before reading the print data with the RIP. And, be sure to make the print settings for unprocessed data when printing the data, without processing.

Steps for data processing [↗](#) “Processing Print Data” on page 7

Print settings for Caldera RIP [↗](#) “Settings in Caldera RIP” on page 15

Is your RIP setting for WH/MS printing?

The ink is not correctly assigned if the input name in the RIP is not the same as the spot color layer name or channel name, such as White and Metallic, that was given in the image processing software. Make sure that there are no misspellings, case errors, or 2-byte characters. Also, make sure to select a print mode for WH/MS.

[↗](#) “Settings in Caldera RIP” on page 15

Is your printer's color mode correct?

The printer's color mode does not switch just by replacing the ink cartridge. Be sure to perform **Change Color Mode** on the menu of the control panel.

Setting procedure [↗](#) *User's Guide* (PDF)

Color and WH/MS Overlapping Parts Do Not Print Correctly

The items to check vary depending on whether or not the print data is processed.

Processed Data

Check the following points.

Is the order of the overlapping layers correct?

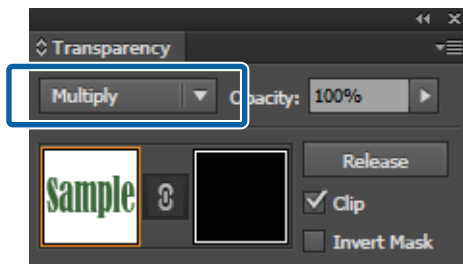
Open the print data in Illustrator or Photoshop and check the order of the layers.

Troubleshooting

❑ Are the settings for overprint (Attributes/Transparency) correct? (Illustrator only)

Open the print data in Illustrator and check whether the settings have been done to either print or not print the parts on the lower layer when objects overlap.

Also, depending on the RIP used, if the setting for overprint is selected in **Attributes**, printing may not be done correctly. Clear everything in **Attributes** and select **Multiply** in **Transparency** for the **Blending Mode**.



❑ Are the print settings for the RIP correct?

Depending on the RIP used, you can set to overprint (knockout) or reshuffle the print order of the layers in the print settings of the RIP. Check whether there is a problem with the print settings of the RIP.

Steps for data processing [↗ “Processing Print Data” on page 7](#)

Print settings for Caldera RIP [↗ “Settings in Caldera RIP” on page 15](#)

Unprocessed Data

Check the following points in the print settings of the RIP.

- ❑ Are the selected print order, number of layers for the print mode, and way to see the print results appropriate?
- ❑ Is the print order of the layers correct?
- ❑ Are the settings for overprint (knockout) correct?

[↗ “Settings in Caldera RIP” on page 15](#)

Gradation Skipping Occurs When Printing at High Densities

Check the following.

Are you using an EMX file that suits the media you are using?

You cannot achieve optimal print results if you do not use an EMX file that suits the media you are using. The mode for high-density printing is in the EMX file for Back Lite Film. Select the mode for high-density printing in the RIP settings.

When using media for which Epson does not provide an EMX file, edit the media settings based on the EMX file for media with similar characteristics.

Troubleshooting

Is the density of ink (Ink Density) set over 100%?

You can print with concentrated colors by setting the ink density to over 100% in the RIP. However, gradation skipping and unevenness in color may occur. Also, if you raise the density too high, the ink will take a long time to dry.

When setting the ink density over 100%, lower the setting value.