

Manual for RIP Printing (Caldera RIP)

Contents

Before Using

| | |
|------------------------------------|---|
| Copyrights and Trademarks. | 3 |
| Screen Appearance. | 3 |
| OS Notation. | 3 |

Introduction

| | |
|--------------------------|---|
| What to Prepare. | 4 |
| Workflow. | 5 |

Preparations for Printing

| | |
|--|----|
| Downloading EMX Files. | 7 |
| Registering the Media Setting Values to the Printer. | 11 |
| Doing Initial Settings for the RIP and Importing Print Information. | 14 |
| For Caldera RIP. | 14 |
| Creating Print Modes Often Used with the RIP. | 19 |
| For Caldera RIP. | 19 |

Print Operations

| | |
|--|----|
| For Caldera RIP. | 27 |
| Printing the Print Data While Checking it. | 27 |
| Hot Folder Printing. | 29 |
| Canceling Printing. | 30 |

Troubleshooting

| | |
|---|----|
| EMX Files Cannot Be Downloaded on the Dashboard. | 32 |
| Failed to Register the Media Setting Values/ Failed to Import Print Information. | 32 |
| The Estimated Print Time Does Not Match (Windows Only). | 34 |
| The Seams between Pages Stand Out. | 36 |
| For Caldera RIP. | 37 |
| Matching the Print Results to the Displayed Color of Print Data. | 37 |
| Checking the Print Results with a Wide Color Gamut Profile in Advance on the Screen. | 38 |
| Matching Your Print Results to the Display Colors in the Image Processing Software. | 40 |
| Matching the Colors to Color Swatch Books and Samples. | 42 |

Before Using

Copyrights and Trademarks

EPSON, EPSON EXCEED YOUR VISION, EXCEED YOUR VISION, and their logos are registered trademarks or trademarks of Seiko Epson.

Microsoft® and Windows® are registered trademarks of Microsoft Corporation.

Mac® and Mac OS® are registered trademarks of Apple Inc.

Adobe®, Illustrator®, Photoshop® and Adobe® RGB (1998) are either registered trademarks or trademarks of Adobe Systems Incorporated in the United States and/or other countries.

General Notice: Other product names used herein are for identification purposes only and may be trademarks of their respective owners. Epson disclaims any and all rights in those marks.

©2016-2017 Seiko Epson Corporation. All rights reserved.

Screen Appearance

- ❑ The screens in this manual may slightly differ from the actual screens. Also be aware that the screens may differ due to a difference in the OS or the usage environment.
- ❑ The software RIP screens that appear in this manual use the following screens, unless otherwise specified.
When using Caldera RIP (Ver. 10.2) on Mac OS X Yosemite

OS Notation

Notation for Windows

In this manual, "Windows" is used as a generic name for all OS (operating systems) for Microsoft® Windows®.

Mac OS Notation

In this manual, "Mac OS X" is used as a generic name for all OS (operating systems) for Mac OS X.

Introduction

When using commercial software RIP (hereafter RIP) to print, you must register information about the media you are using to both printers and RIP. How to register and do settings differs, as seen below, according to the required print level.

For Simple Printing

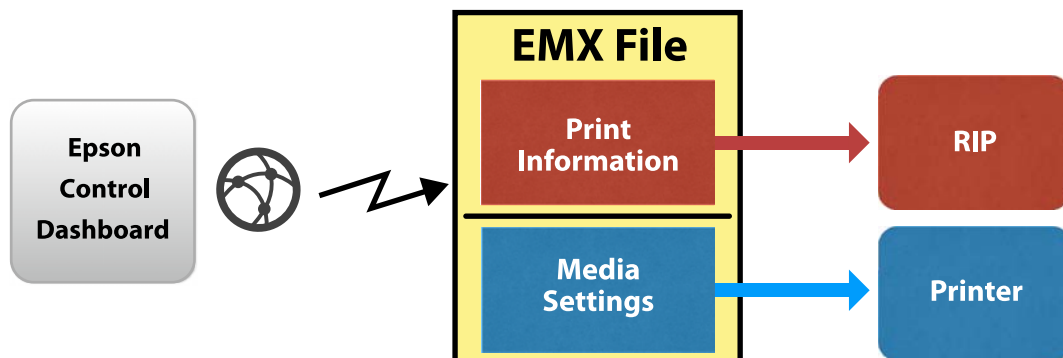
You can easily register basic media information by selecting the media type according to the media you are using in **Easy Media Setup** in the printer's settings menu. Simply setting the media type and the print mode in the RIP allows you to print.

For the Optimal Printing on the Commercial Media You Are Using

Use the print settings files (hereafter EMX files) that Epson provides to register and do settings. EMX files are batched files that contain the following information, most suitable for the media you are using.

- ❑ Media setting values: Values for media settings (temperature of the heater, platen gap, etc.) that are registered to the printer
- ❑ Print information: Such setting information as resolution and the number of print passes and ICC profiles that are read and used by the RIP

Download and import EMX files with the Epson software, Epson Control Dashboard.



In this manual we explain the basic procedures for RIP printing that uses EMX files. Also see the supplemental manual, *Printing with WH/MS, Matching Specific Colors* (PDF) when printing with the SC-S80600 Series using White/Metallic Silver ink.

What to Prepare

Software RIP (Commercially Available)

Use a RIP that can be used with your printer. You can check the latest information about compatible RIP on the Software Available List (<https://bizijdevelopers.ebz.epson.net/rip/list/>).

Epson Control Dashboard (Dashboard)

Use the Dashboard when importing setting information for the printer or RIP, or when downloading EMX files.

You can install the latest software from the Setup Navi (<http://epson.sn>).

Introduction

Important:

Install the RIP and Dashboard on a computer that satisfies the following conditions.

- It can connect to the internet. You will not be able to download EMX files if your computer cannot connect to the internet.
- There is enough space to install both the RIP and Dashboard. Separate computers cannot link correctly.

Print Data

We recommend PDF (PDF/X-1a standard or PDF/X-4 equivalent) for the following points.

- Links to images do not break and the layout does not get corrupted.
- Text does not need to be outlined.
- There is no difference in appearance even if the version of the image processing software is different.

See the manual for the image processing software (Adobe Photoshop, Adobe Illustrator, etc.) you are using for how to put print data into PDF format.

Workflow

These preparations for printing are done when printing on media for the first time or printing on new media. They do not need to be done every day for all print jobs.

* The procedure may differ depending on the RIP you are using.

Preparations for Printing

(1) On the Dashboard, download the EMX files for the media on which you are printing.

 ["Downloading EMX Files" on page 7](#)



(2) Register the values of the media settings to the printer on the Dashboard.

 ["Registering the Media Setting Values to the Printer" on page 11](#)



(3) Load the media for printing in the printer and do Media Adjust.

Be sure to correctly load the media for printing and do **Media Adjust** in the printer's settings menu.

See *Operator's Guide* (booklet/online manual) for details about the procedure.



(4) Install the RIP and import print information from the EMX files to the RIP.*

 ["Doing Initial Settings for the RIP and Importing Print Information" on page 14](#)

Introduction



(5) Create a print mode that is often used with the RIP.*

 ["Creating Print Modes Often Used with the RIP" on page 19](#)

Print Jobs

If you are printing as a continuation of the preparations for printing, you do not need to do step (1).

(1) Load media in the printer and select the media setting number.

Correctly load the media and select the media setting number that has been registered to the printer.

See *Operator's Guide* (booklet/online manual) for details about the procedure.



(2) Read the print data to the RIP, and then print it.*

 ["Print Operations" on page 27](#)

Preparations for Printing

Downloading EMX Files

In this section we explain the procedures for downloading the EMX files for the print media with the Dashboard.

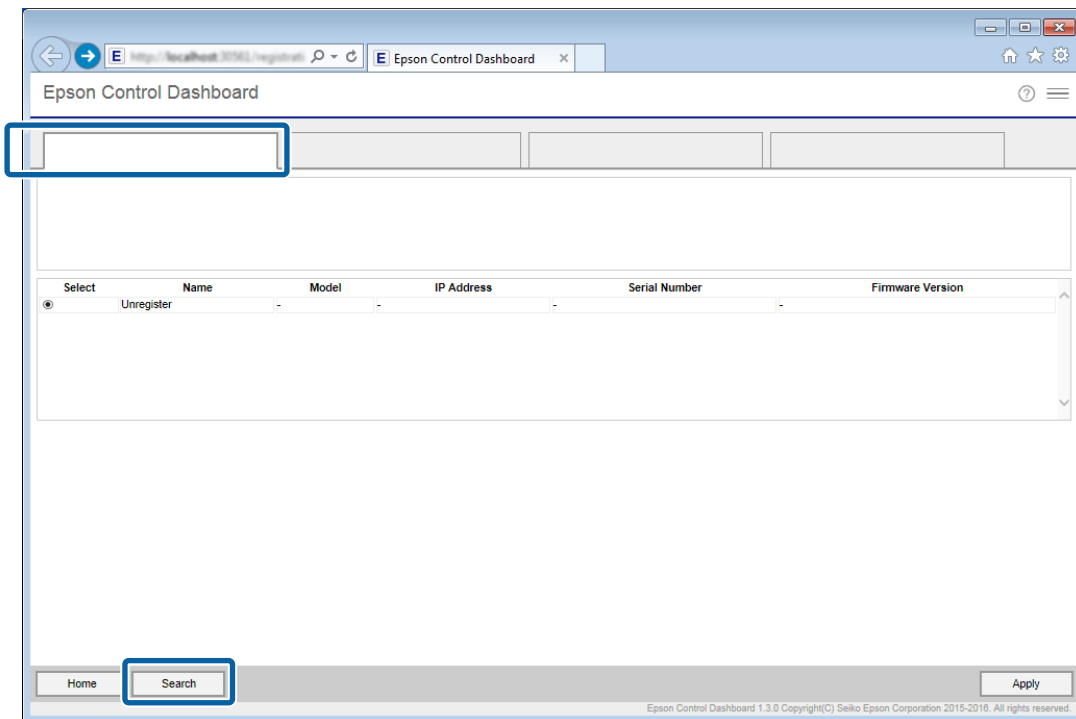
EMX files differ for each model, even when they are for the same media. If you are using multiple printer models, download the EMX files that are specific to each model.

If you have finished registering your printer on the Dashboard, start from step 3.

1


Start the Dashboard. Select the tab for registering printers, and then click **Search**.

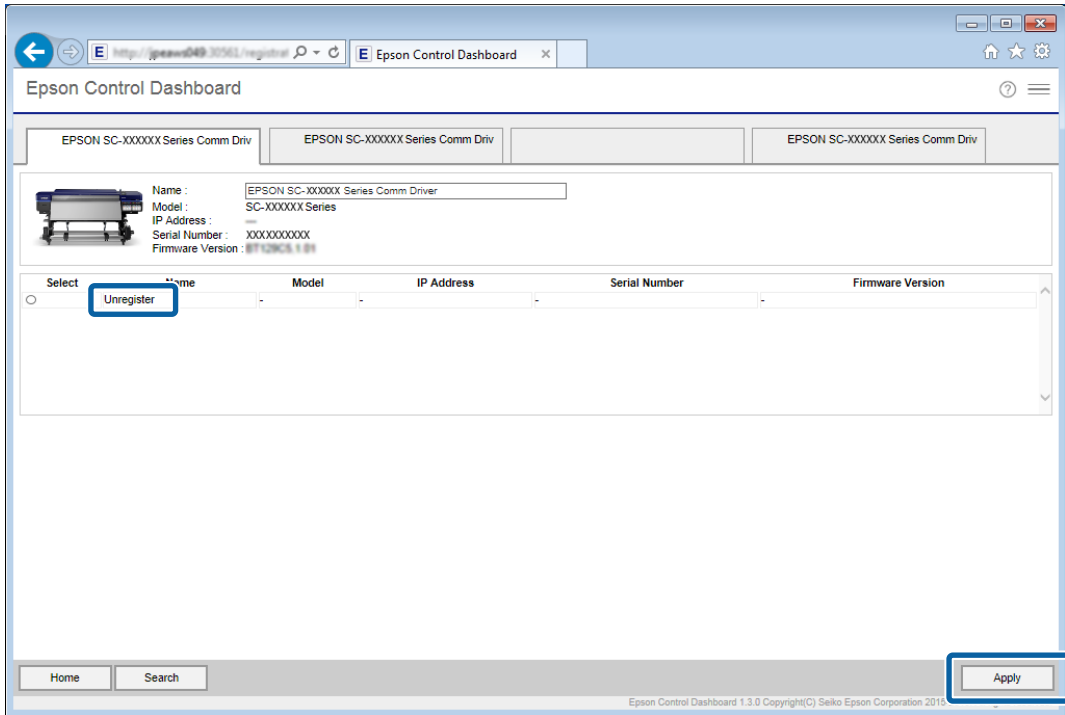
Any unregistered printers that are connected to the network or that are connected by USB to your computer are displayed.



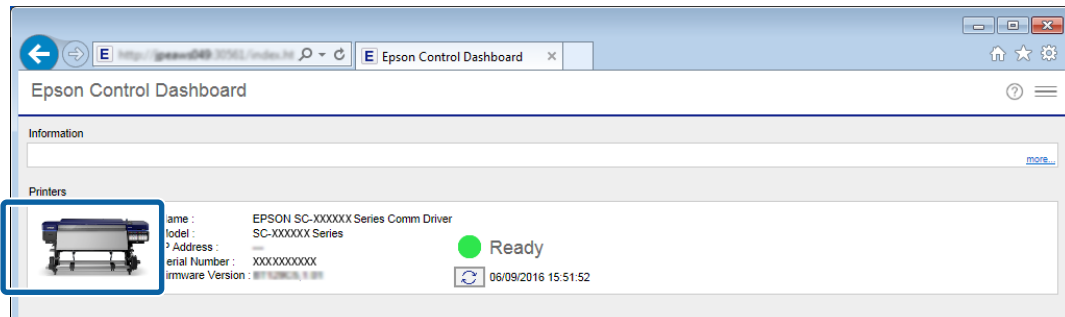
Preparations for Printing

2 Select the printer you want to register, and then click **Apply**.

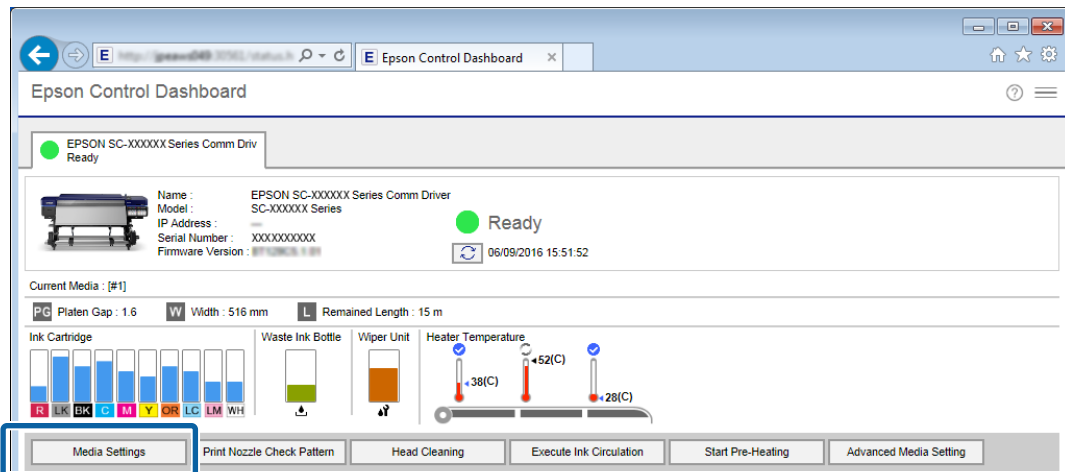
Data is being acquired from the printer while the icon that displays the printer's status icon is . Do not operate the computer.



3 On the **Home** screen, click your printer.

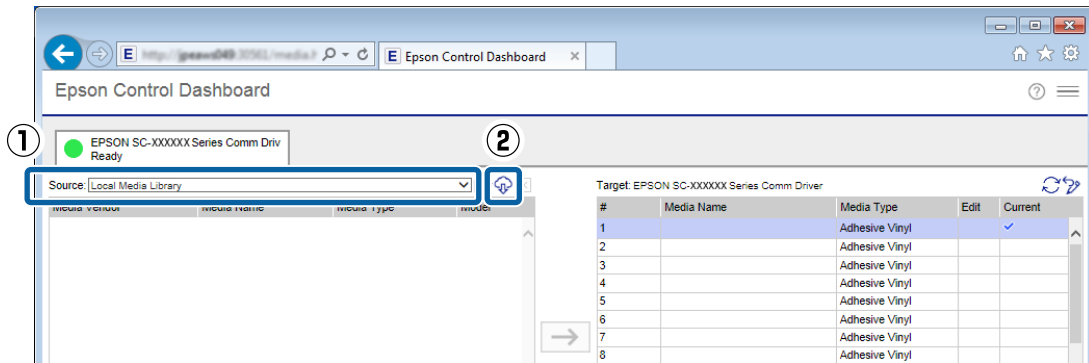


4 Click **Media Settings**.

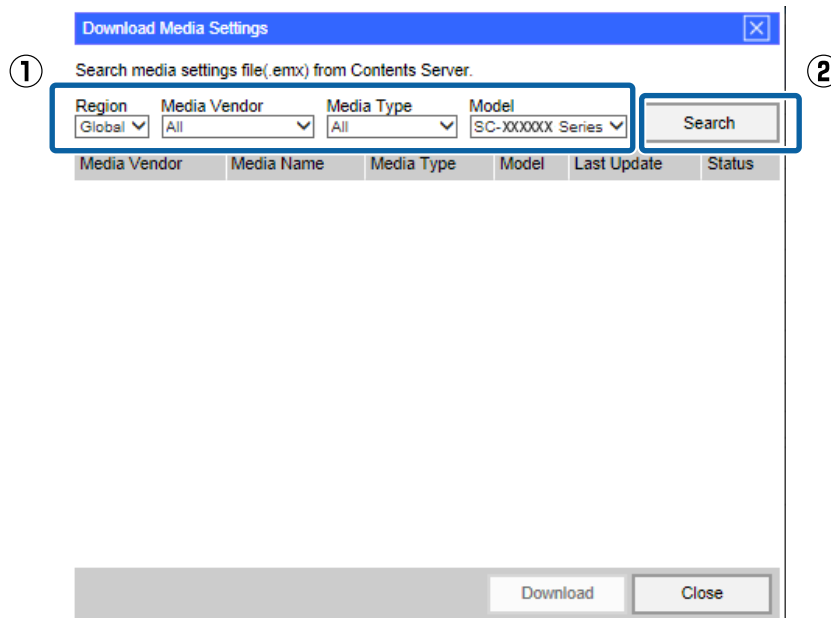


Preparations for Printing

5 On **Source**, select **Local Media Library**, and then click .



6 Select the Region, Media Vendor, Media Type, and Model, and then click **Search**.
EMX files that match your search conditions are displayed.



7 Click the necessary EMX file, and then click **Download**.

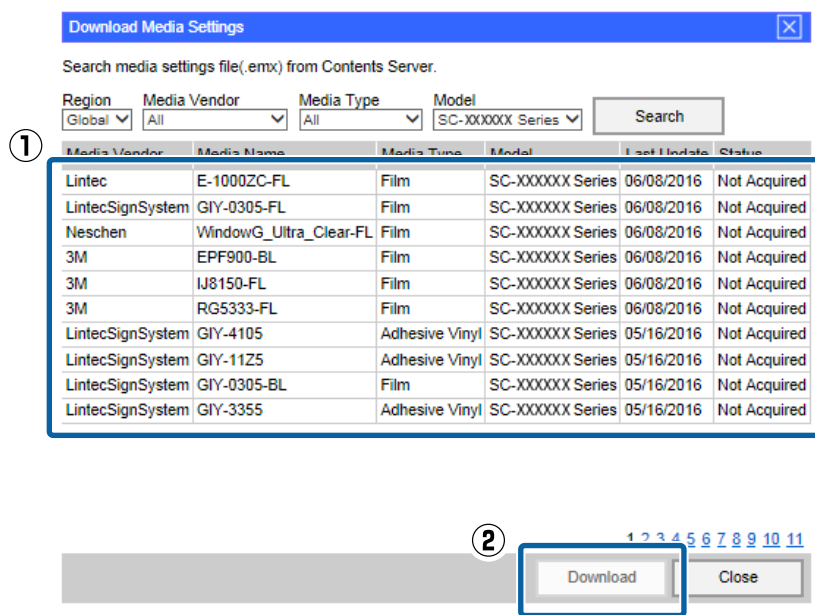
The EMX files are saved in the following locations. You cannot change the location in which they are saved.

Windows: %PUBLIC%\Documents\Epson\Control Dashboard\XXX*

Mac OS X: /Library/Caches/Epson/Epson Control Dashboard/XXX*

* The final XXX are the 3 characters after SC- for the model of your printer (e.g., "S80" when the model is SC-S80600 Series).

Preparations for Printing



Note:

The **Status** of the EMX files is indicated below.

- Not Acquired:**
These are EMX files that have never been downloaded before.
- Acquisition Complete:**
These are EMX files that have been downloaded and have not changed since they were downloaded.
- Update Available:**
These are EMX files that were changed after they were downloaded. Downloading them overwrites the EMX files that have already been downloaded.

If you need several EMX files repeat steps 6 through 7 to download them one at a time.

8

Click **Close**.

The EMX files are imported and the list of source media settings is displayed. You cannot click **Close** while downloading EMX files. Wait until the button becomes enabled.

Next, register the media setting values to the printer.

[“Registering the Media Setting Values to the Printer” on page 11](#)

Important:

Be sure to register the media setting values to the printer in advance. The RIP checks the media settings registered to the printer. You cannot use the function for automatically importing print information from the EMX files.

Preparations for Printing

Registering the Media Setting Values to the Printer

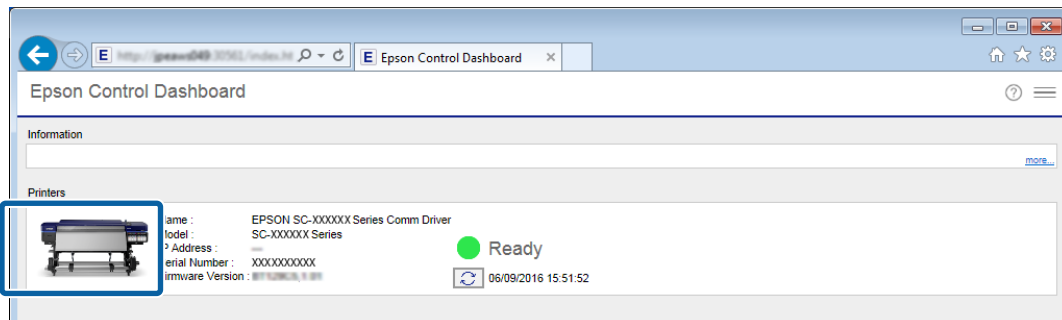
In this section we explain the procedures for registering the media setting values for the print media with the Dashboard.

Important:

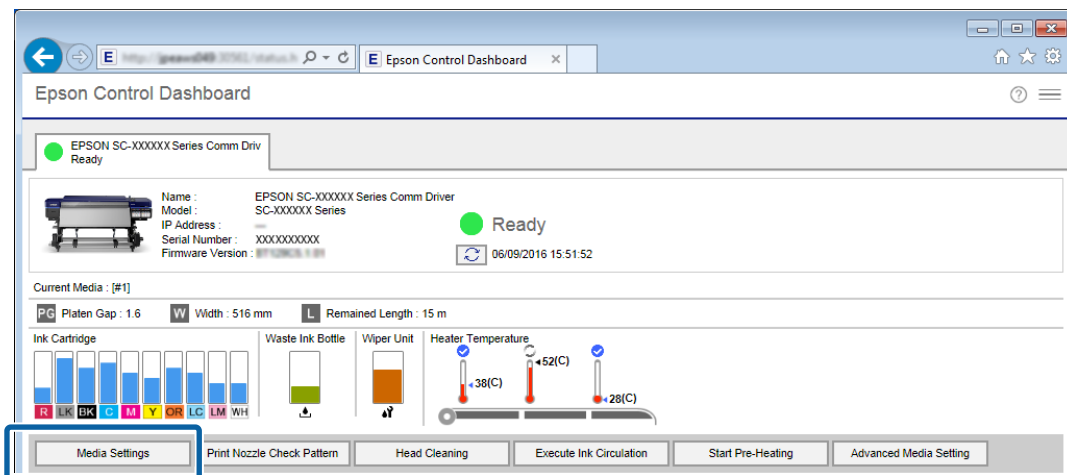
- Be sure to exit the RIP before starting an operation.**
If the Dashboard goes offline, you may not be able to automatically import print information to the RIP, or the operation may be unsuccessful.
- Do not do other operations on the printer while registering the media setting values.**
Printing may be interrupted, or registration of the media setting values may be unsuccessful, if you operate the printer's control panel or print while registering. We recommend telling those around you before you start registration when there are several users sharing the printer.

If you are continuing to register after downloading the EMX files, start from step 3.

- 1** Start the Dashboard. On the **Home** screen, click your printer.



- 2** Click **Media Settings**.

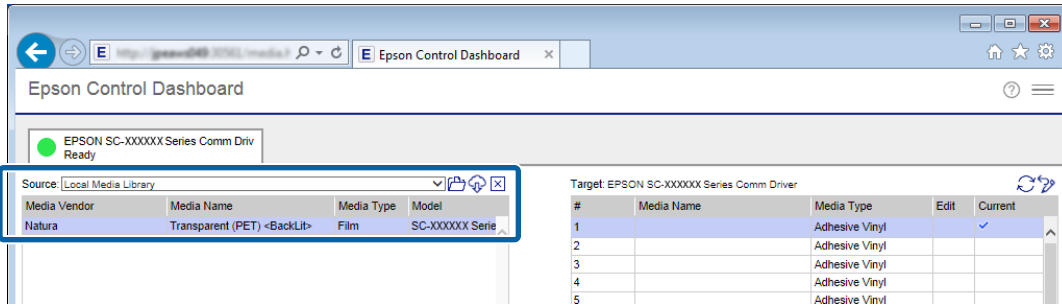


- 3** In **Source**, select one of the following, and then click the media settings you want to set.


- EMX files downloaded with your computer:
Local Media Library
- Setting backup file (cpb) of other printer:
Custom Media Backup (cpb)

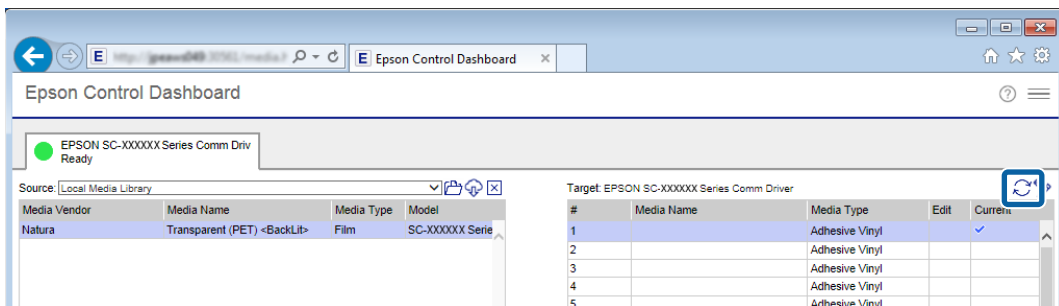
Preparations for Printing

- Media settings of other printers registered to the Dashboard:
Name of the printer you want to register



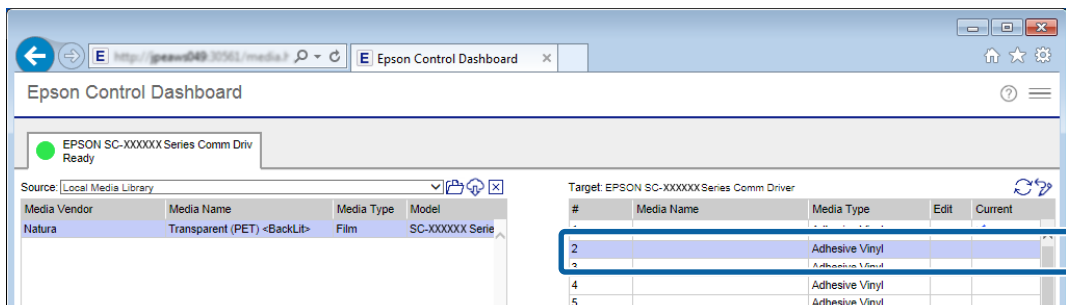
If the printer is connected by USB, proceed to step 4. If the printer is connected by any other means, proceed to step 5.

- 4** Click  to update to the latest printer status.




- 5** In **Target**, click the media setting that writes the settings.

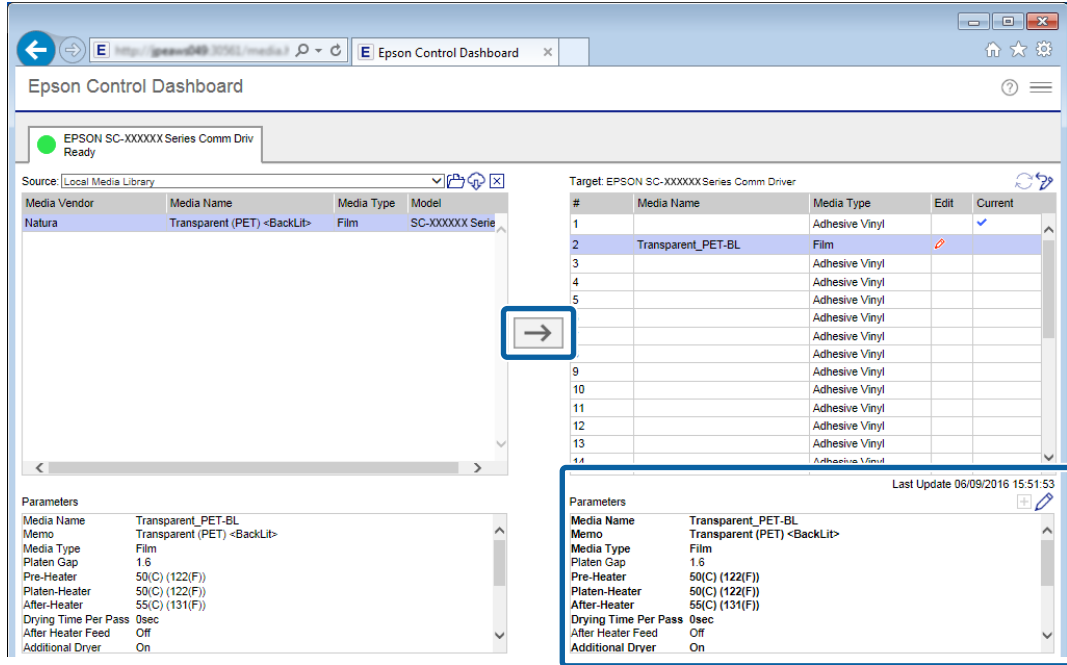
Be aware that the values for the settings are overwritten if you select media settings to which settings have already been saved.




Preparations for Printing

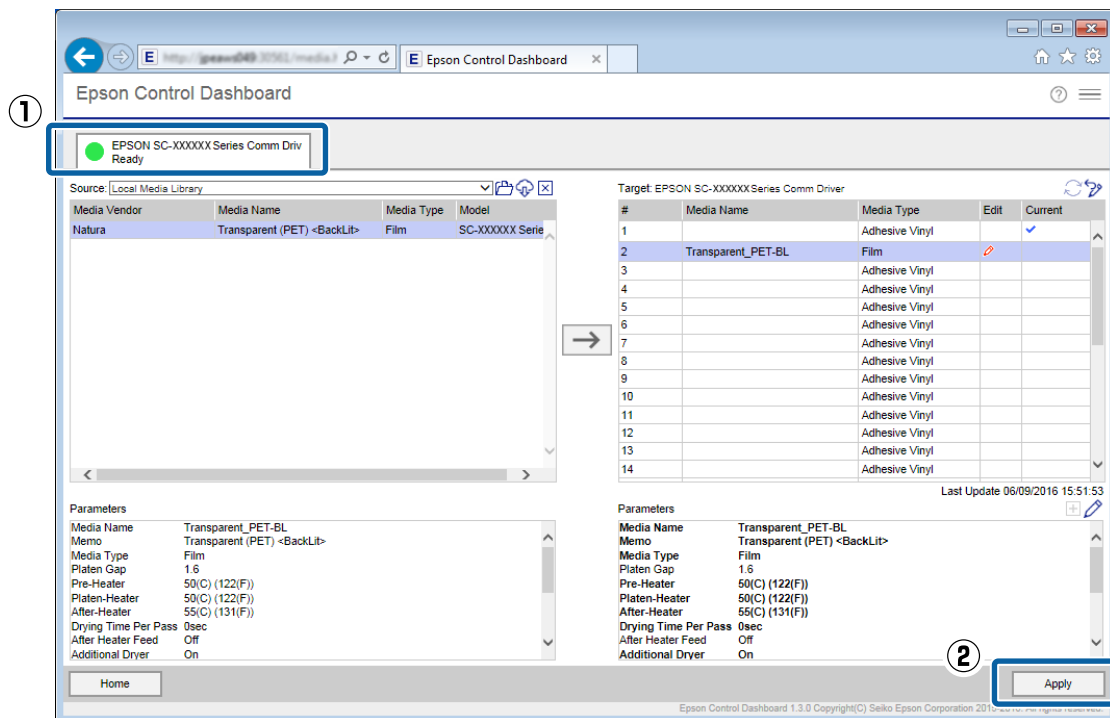
6 Click .

The display for media settings in **Target** is updated. You can check the details of the updates in Parameters under the list. If you need to customize the settings before writing to the printer, click  to edit the settings.



7 Check that the icon that displays the printer's status is  (Ready), and then click **Apply**.

The media setting values are written to the printer.



If you are using multiple printers of the same model, or if you are using multiple models, register the media settings to all of the printers using the same steps.

Preparations for Printing

Next, do **Media Adjust** in the printer's settings menu. The print results may be grainy or have banding if Media Adjust is not done. When doing Media Adjust, correctly load the media while paying attention to the following points.

- ❑ Load media in the same way as which it will actually be used.
- ❑ On the **SelectMedia** screen, select the number to which the values of the media settings are registered.

See *User's Guide* (online manual) for details about the procedure.

Doing Initial Settings for the RIP and Importing Print Information

For Caldera RIP

Do work in the following order on the computer on which Dashboard is installed.

- (1) Install Caldera RIP. Copy the Epson special profile for wide color gamut printing. (Initial setting)
- (2) Import the print information from the EMX files to the RIP.

Initial Settings for the RIP

If you have finished installing Caldera RIP, start from step 2.

- 1** Install Caldera RIP and the printer driver (.calpatch) for Caldera RIP.
If you are using multiple models, install the printer driver (.calpatch) for all models.
- 2** Copy the Epson special profile for wide color gamut printing to the following folder.
Source:
Library - Caches - Epson - Epson Control Dashboard - Profile

Target:
opt - caldera - lib - ICC_PROFILES

Note:

If you cannot find the folder, search the folder for the Source, "EpsonWideCMYK", and the Target, "CalderaCMYK".

Next, import the print information.

Importing Print Information

Do everything manually the first time. If you are adding and importing EMX files for new media, do the operation in the following order.

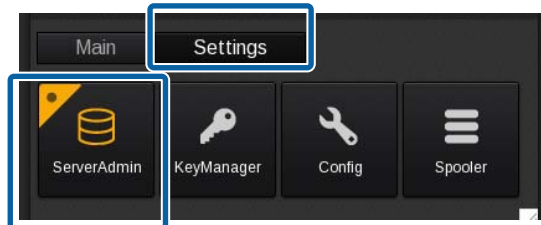
Preparations for Printing

- (1) Download the EMX files.
- (2) On the Dashboard, register the values of the media settings to the printer and do **Media Adjust** in the printer's settings menu.
- (3) Do the following from step 5 to import the print information to the RIP.

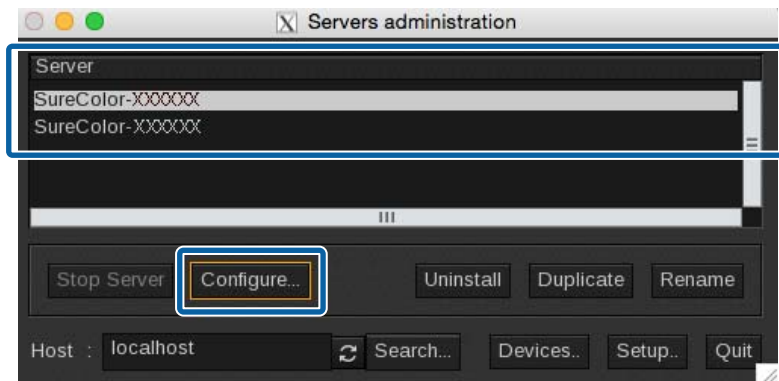
- 1 Start Caldera RIP.



- 2 In the **Settings** tab, click **ServerAdmin**.



- 3 Select your printer and click **Configure**.

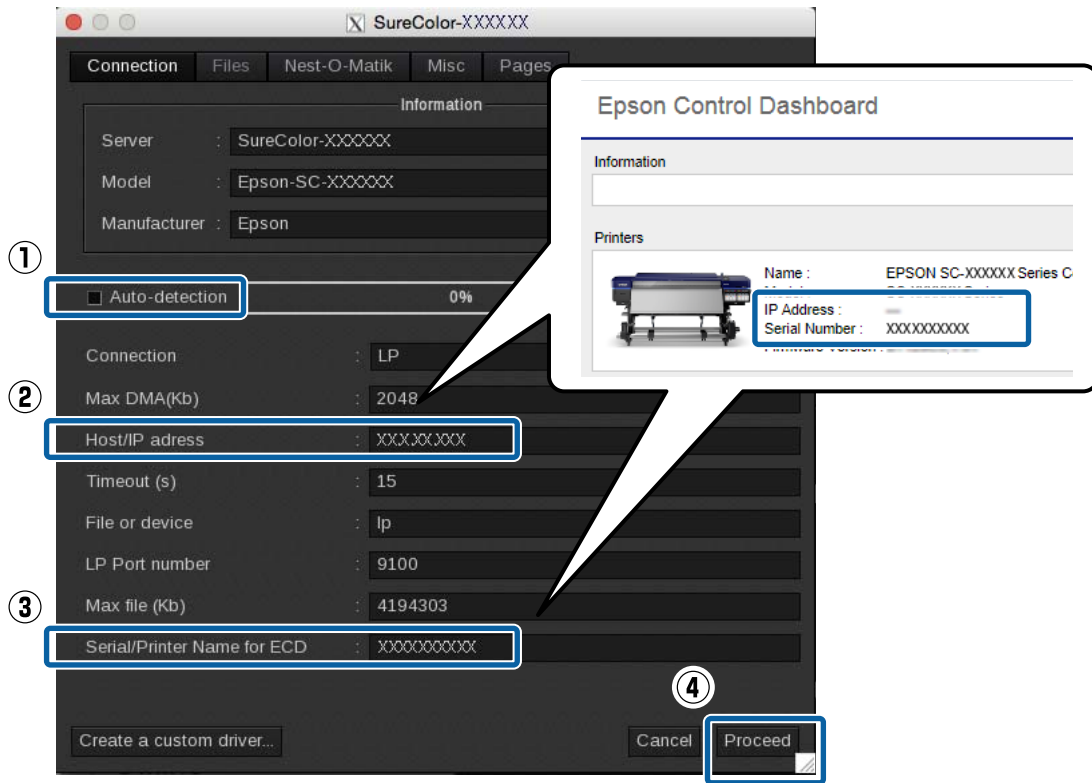


- 4 Clear **Auto Detection** and input the following according to the connection status. Then click **Proceed**.

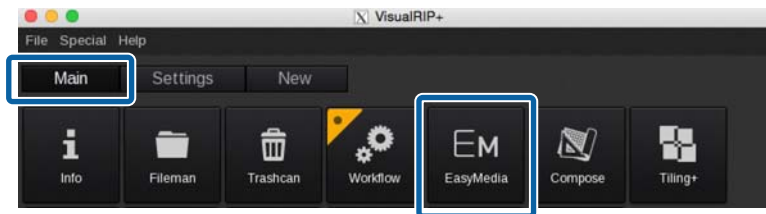
- With network connection:
IP address (2) and Serial Number of the printer (3)
- With USB connection:
Serial Number of the printer (3)

Preparations for Printing

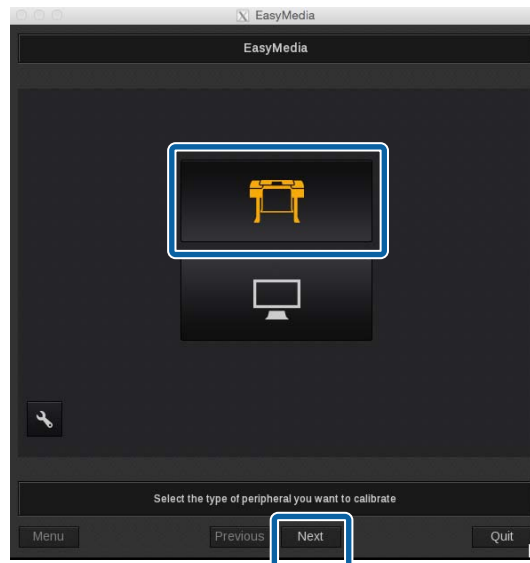
You can check the IP address and Serial Number on the **Home** screen of the Dashboard.



5 In the **Main** tab, click **EasyMedia** (or **EasyMediaLight**).

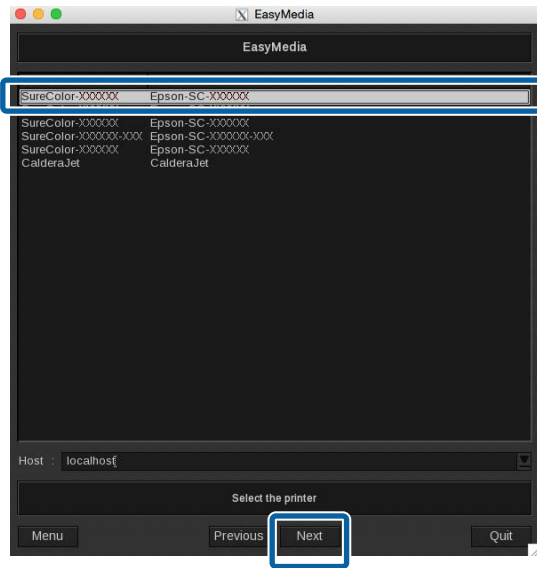


6 Select the printer icon and click **Next**.

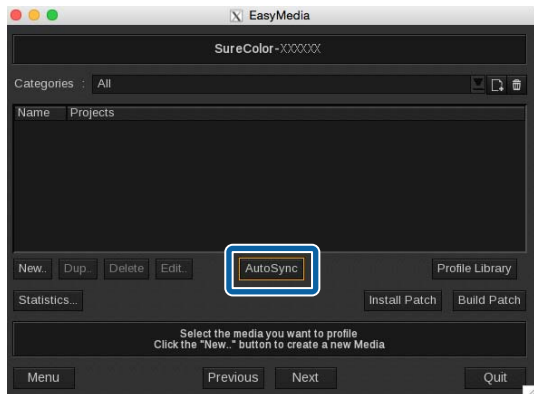


Preparations for Printing

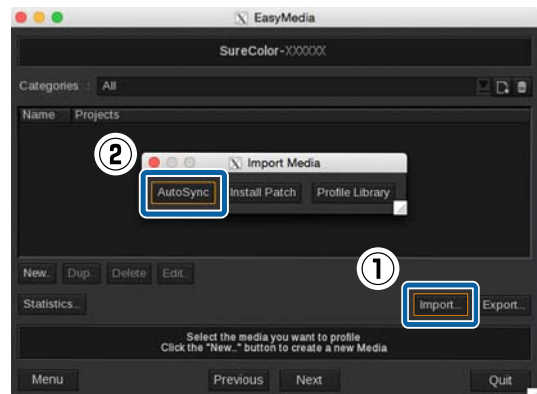
7 Select your printer and click **Next**.



8 Click **Autosync**.
The procedure differs as shown below depending on the version.



Ver. 10.X (excluding 10.0 and 10.1)



Ver. 11.X

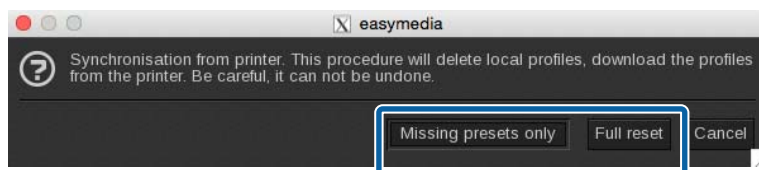
9 Select the print information that is imported from the EMX files from below.

Missing presets only:

Import the additional print information only for the media that were registered settings to the printer after the previous print information is installed.

Full reset:

Import the print information for all media that are currently registered settings to the printer. All of the print information that was previously imported to the RIP is deleted and overwritten.

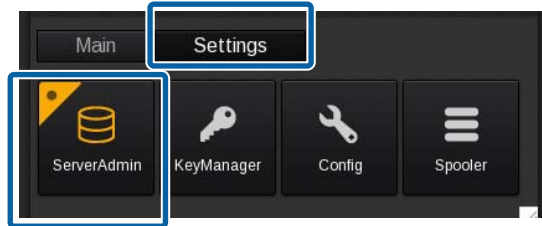


Preparations for Printing

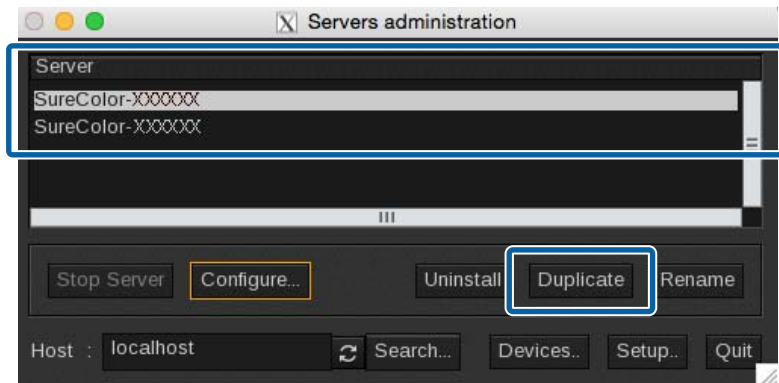
- ❑ If you are using multiple models:
Do the same procedure for all of the printers.
- ❑ If you are using multiple printers of the same model:
Do the following procedure to duplicate printers and import the print information to all the printers.

Duplicating a Printer

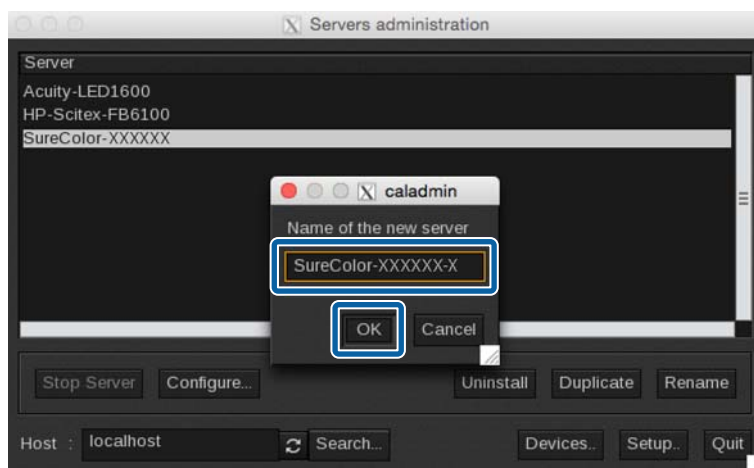
- 1 Start Caldera RIP. In the **Settings** tab, click **ServerAdmin**.



- 2 Select your printer and click **Duplicate**.
If a confirmation screen appears, click **Yes**.



- 3 Name each printer so that you can tell them apart and click **OK**.



Next, import the print information, starting from step 3 of "Importing Print Information."

[🔗 "Importing Print Information" on page 14](#)

Preparations for Printing

Creating Print Modes Often Used with the RIP

For Caldera RIP

In Caldera RIP, you can save print modes that you often use as a preset called Configuration.

By creating a Configuration, you do not need to do bothersome print settings every time. You can print using the same print mode simply by reading the print data and selecting the Configuration.

[🔗 “Creating a Configuration” on page 19](#)

The following are also possible if you register a Configuration you created to Favorites.

- A pulldown menu for the print settings is displayed and you can make selections easily.
- You can create hot folders easily.

[🔗 “Registering a Configuration You Often Use to Favorites” on page 24](#)

If you create a hot folder, you can print easily just by dragging and dropping the print data to the hot folder (or an Alias for the hot folder).

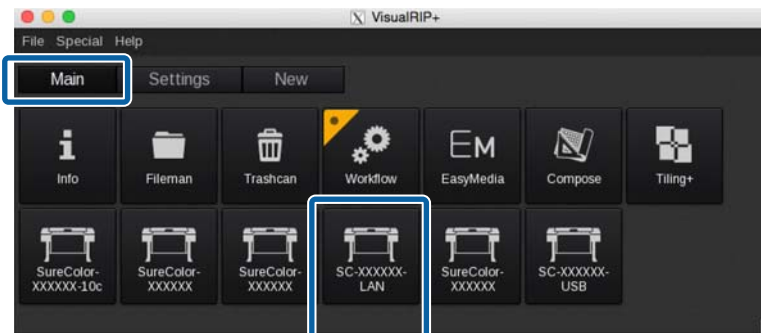
[🔗 “Creating Hot Folders” on page 25](#)

Creating a Configuration


- 1 Start Caldera RIP.

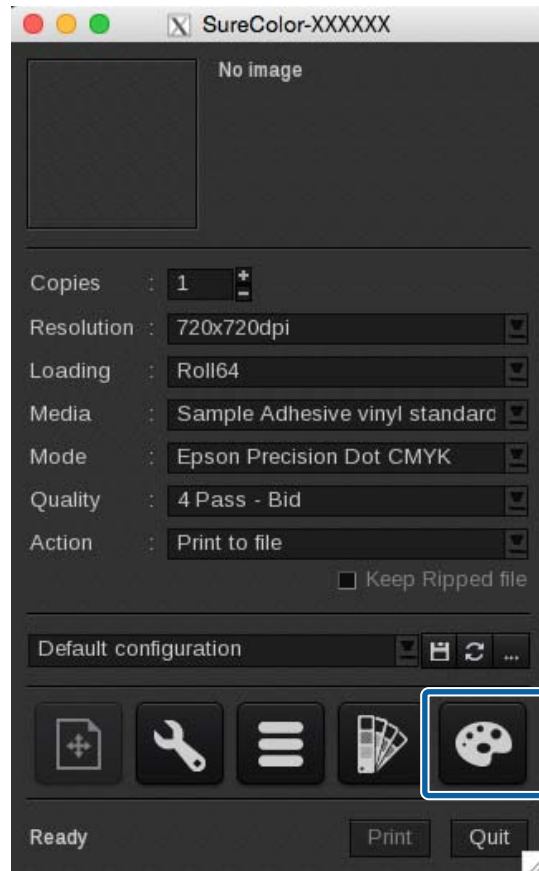


- 2 In the **Main** tab, click your printer.



Preparations for Printing

- 3 Click  (Colors) in the printer dialog box.



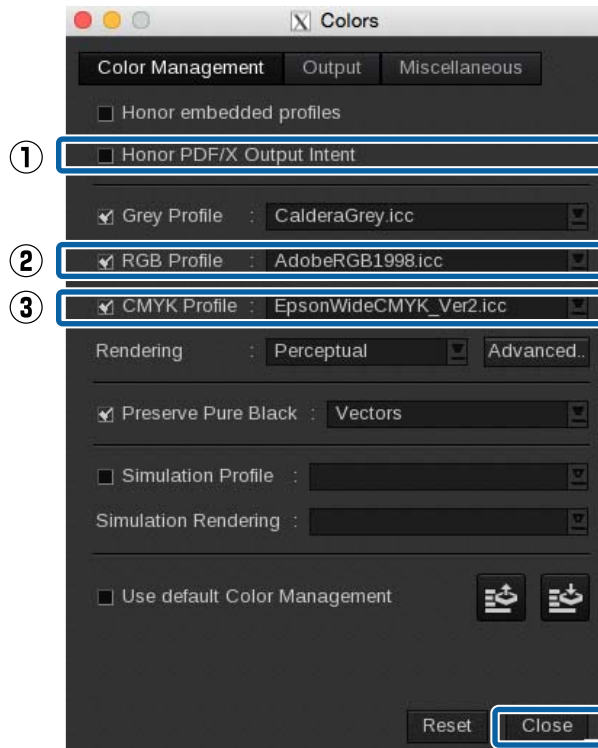
- 4 See the following tables when setting (1) through (3) in the **Color Management** tab, and then click **Close**. Ordinarily, do not change any settings other than (1) through (3). Doing so makes it difficult to match the colors as intended.

| | |
|-----|---|
| (1) | Specify the processing for when profiles are embedded in the print data. Selecting this references the input colors of the embedded profile. |
| (2) | Select the profile for RGB. We recommend AdobeRGB1998.icc if you want to do brightly colored printing with a wide color gamut for signs, etc. We recommend sRGB.icc if you want to print in colors used in general printing, such as offset printing. |
| (3) | Select the profile for CMYK. Select EpsonWideCMYK_Ver2.icc if you want to do brightly colored printing with a wide color gamut for signs, etc. Select FOGRA, SWOP, or GRACoL, etc., if you want to print in colors used in general printing, such as offset printing. |

See the following for settings for printing with the display colors in the image processing software and how to check print results in advance.

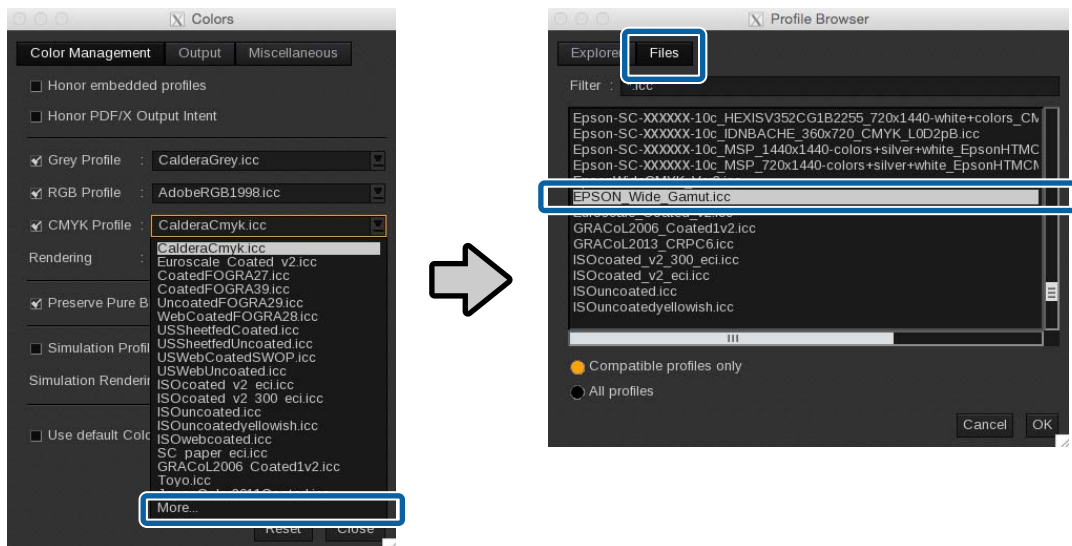
Preparations for Printing

“Matching the Print Results to the Displayed Color of Print Data” on page 37



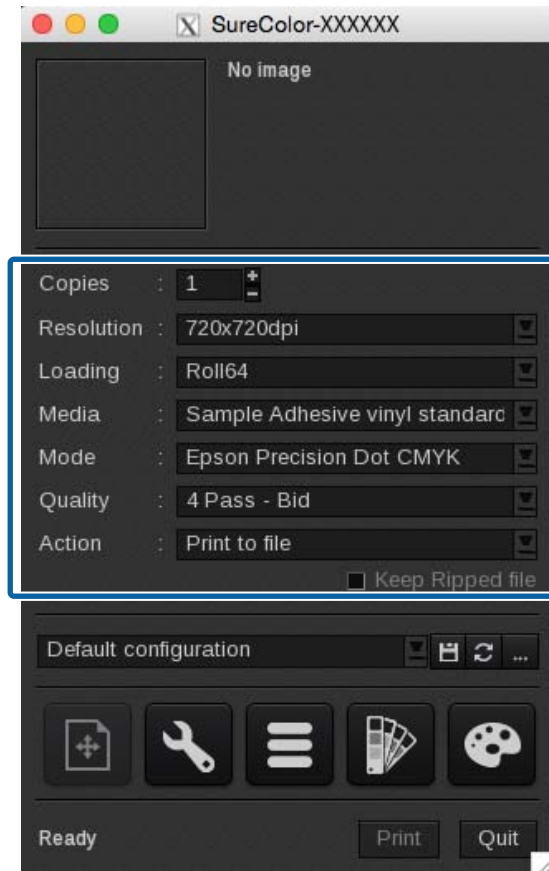
Note:

If you cannot find *Epson Wide CMYK_Ver2.icc* in (3), click **More** in the lowest level. Then select it in the **Files** tab on the **Profile Browser** screen.



Preparations for Printing

5 Do the print settings in the printer dialog box.

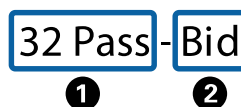


See the following table for a summary of the setting items. (See the manual supplied with the RIP for more details.)

| | |
|-------------------|---|
| Copies | Specify the number of copies. |
| Resolution | Specify the print resolution for the image. |
| Loading | Select the width of the media that has been loaded in the printer. |
| Media | Select the type of the media that has been loaded in the printer. |
| Mode | If you are using print information that was imported from an EMX file, select the setting that includes Epson Precision Dot CMYK in its name. |
| Quality | Select the number of print passes. The recommended settings for each print pass are indicated by an "*" (asterisk). See the supplementary table for details. |
| Action | If you plan on printing immediately after finishing the settings, select Print . If you are doing hot folder printing, select RIP then Print . |

How to Read Quality

In the following settings, bidirectional printing is done in 32 passes. The following table describes the meanings of the setting names ① and ②.

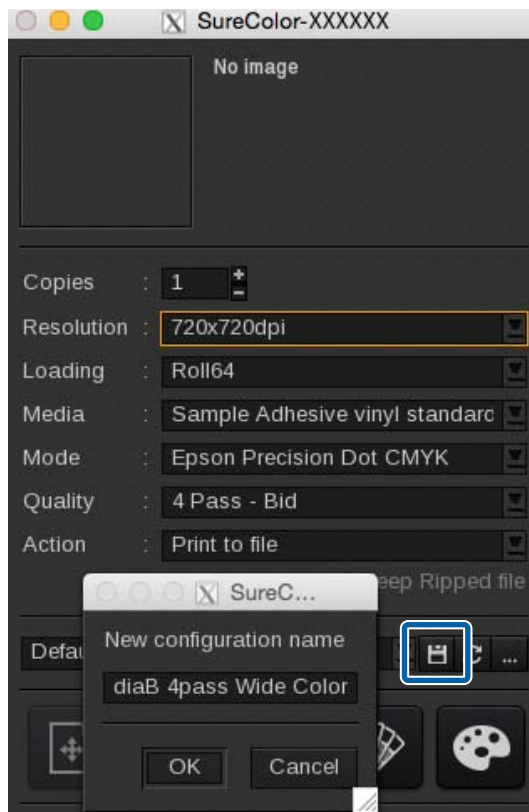


Preparations for Printing

| | |
|----------|--|
| 1 | Indicates the number of print passes (how many times printing is split for one part of the image). The higher the number the better the print quality, but the printing speed decreases. Depending on the media you are using, the term High Quality may appear following the name of the media. This setting helps prevent the occurrence of uneven density and banding with the number of passes set, but it reduces the print speed. |
| 2 | Indicates the method in which printing is done. The printhead prints while moving both left and right; or the printhead prints while moving in only one direction. You can select one of the following. <ul style="list-style-type: none"> <input type="checkbox"/> Bid: The printhead prints while moving both left and right, which allows you to print quickly. <input type="checkbox"/> Unid: Printing is done only in one direction. The print quality increases, but the printing speed decreases. |

Note:
Of the choices in the pulldown menu, the items in white text are recommended settings. Although you can specify items that are in other colors, such as red, the print quality is not guaranteed (the following diagram is an example of when the Resolution pulldown menu is displayed).

- 6** Once you have finished doing the settings, click to name the Configuration and save. We recommend using a name that is easy to understand for the other person that is printing something.



Preparations for Printing

Registering a Configuration You Often Use to Favorites

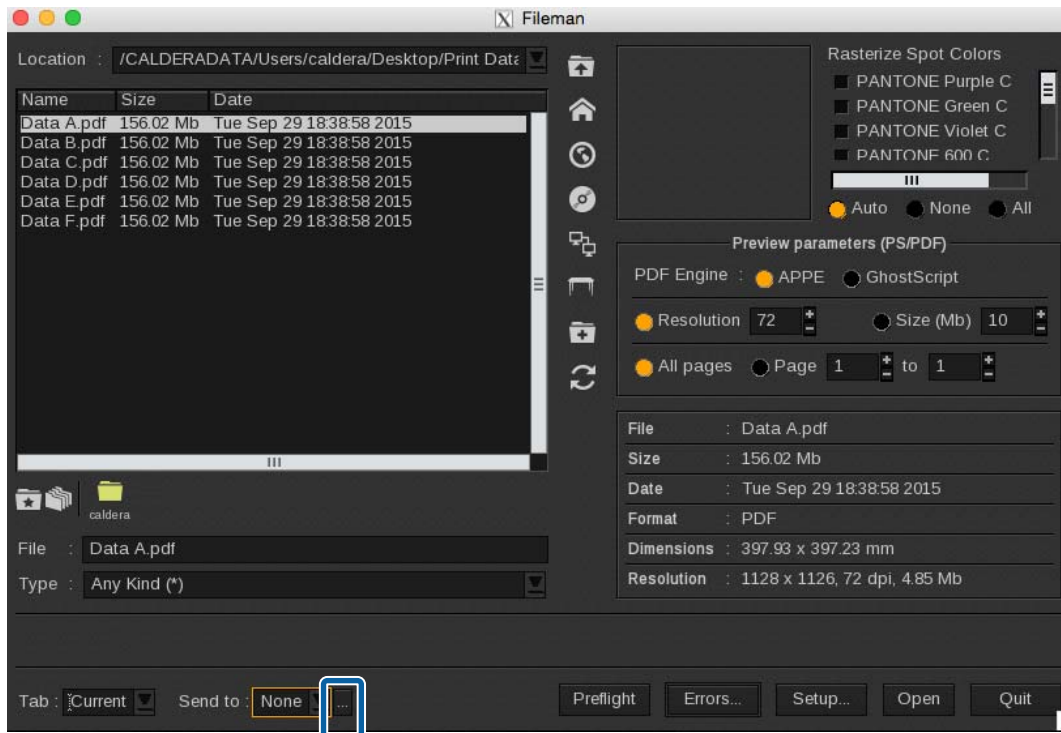
- 1 Start Caldera RIP.



- 2 In the **Main** tab, click **Fileman**.

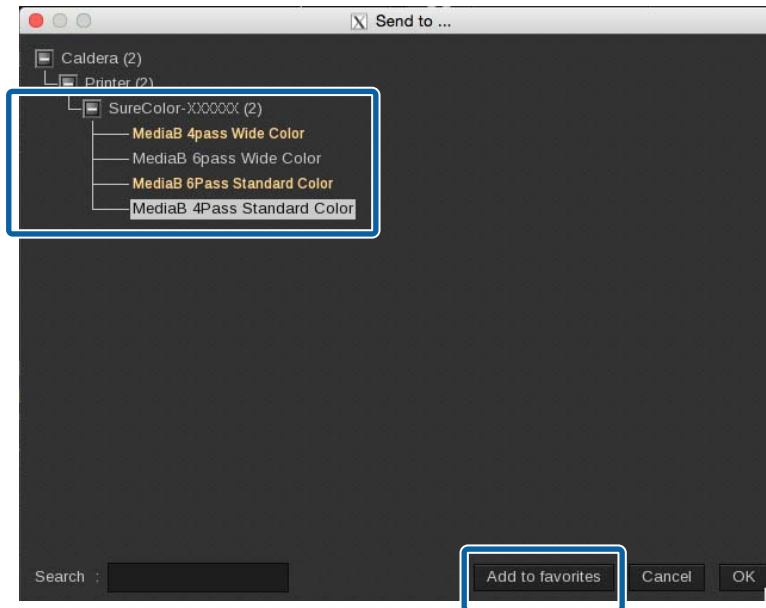


- 3 Click the ... to the right of **Send to**.



Preparations for Printing

- 4 Select a Configuration you often use and click **Add to favorites**.
The Configuration you selected is registered to Favorites.



Creating Hot Folders

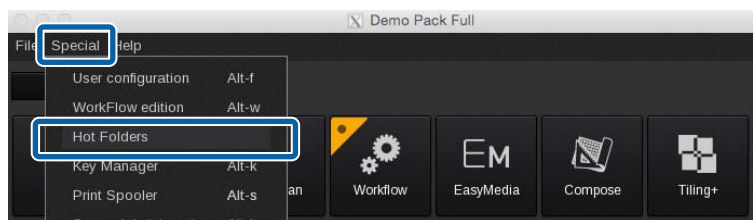
Register a Configuration for creating a hot folder to Favorites in advance.

 [“Registering a Configuration You Often Use to Favorites” on page 24](#)

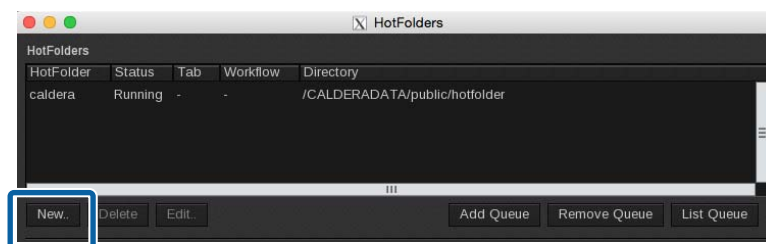
- 1 Start Caldera RIP.



- 2 In the **Main** tab, click in the order of **Special - Hot Folders**.



- 3 Click **New**.



Preparations for Printing

4 Do the settings for the hot folder, and then click **OK**.

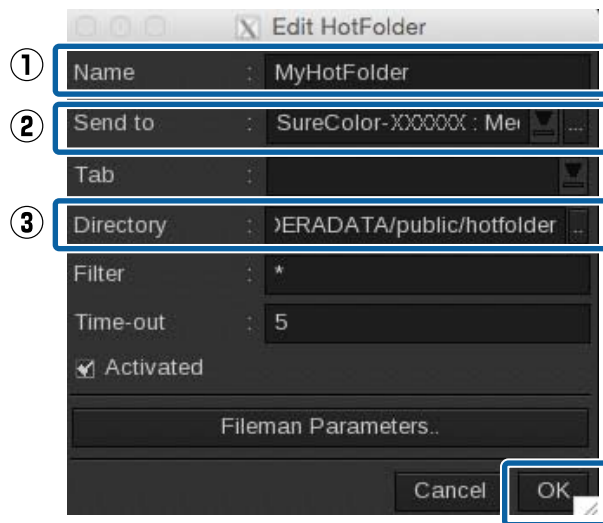
(1) Input the name of the hot folder.

We recommend using a name that is easy to understand for the other person that is printing something.

(2) Click the ... on the right edge of the **Send to**. Select the Configuration that you registered to Favorites.

(3) Click the ... on the right edge of the **Directory** to specify a location at which to create the hot folder.

Creating an Alias for the hot folder is handy when printing.



Note:

If you want to do hot folder printing through the network from another Mac, consult with the network administrator, and then either share an Alias or create a hot folder in a shared server.

Print Operations

In this section we explain how to print one print data as one job. See the manual for the RIP for how to automatically layout several print data and print them all at once, or for how to add margins and marks and print.

For Caldera RIP

We recommend printing the print data using Configuration while checking it in preview.

 [“Printing the Print Data While Checking it” on page 27](#)

Hot folder printing is helpful when you do not need to check the print data or print mode.

 [“Hot Folder Printing” on page 29](#)

Printing the Print Data While Checking it

- 1 Correctly load the media into the printer.
See *Operator's Guide* (booklet/online manual) for the procedure for loading media.

- 2 Start Caldera RIP.



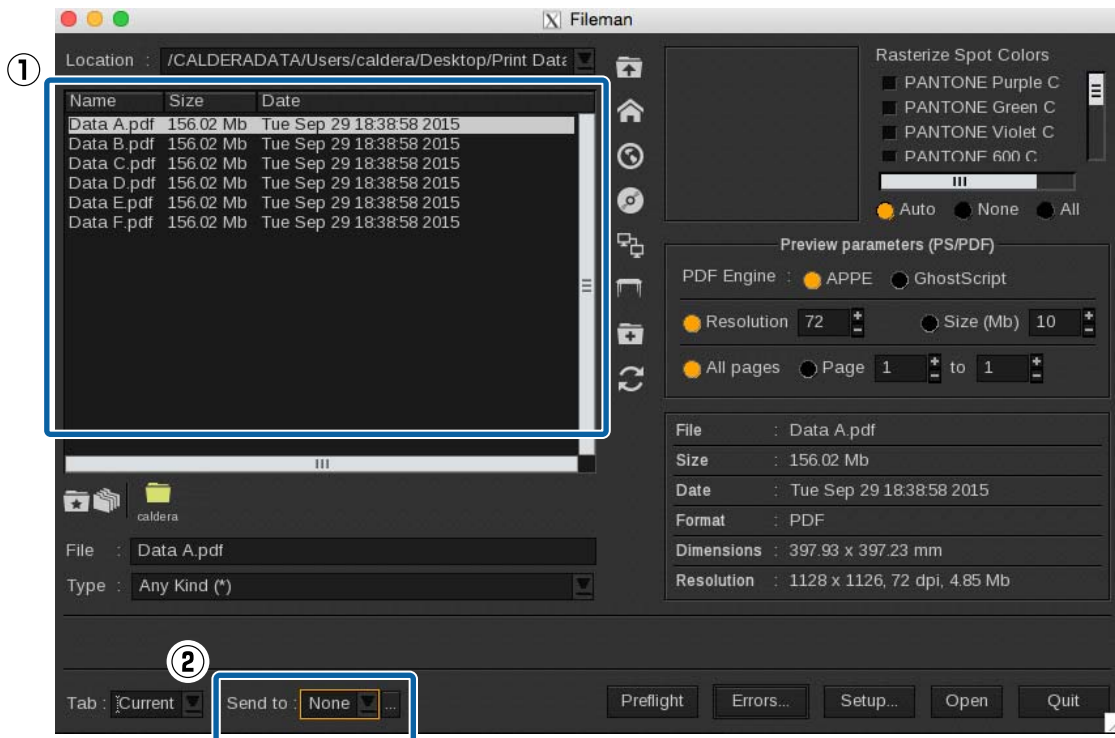
- 3 In the **Main** tab, click **Fileman**.



- 4 Select the print data, and then select a Configuration that the media loaded in the printer can use.
 - Click ... if you are selecting from all created Configuration. If you are using multiple printers, correctly select the Configuration for the printers you are using.
 - You can select a Configuration registered to Favorites using the pulldown menu.

Print Operations

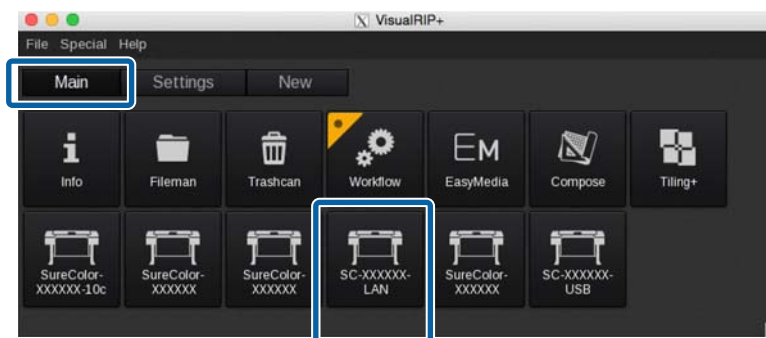
🔗 “Registering a Configuration You Often Use to Favorites” on page 24



5 Click **Open** on the bottom right of the **Fileman** screen.

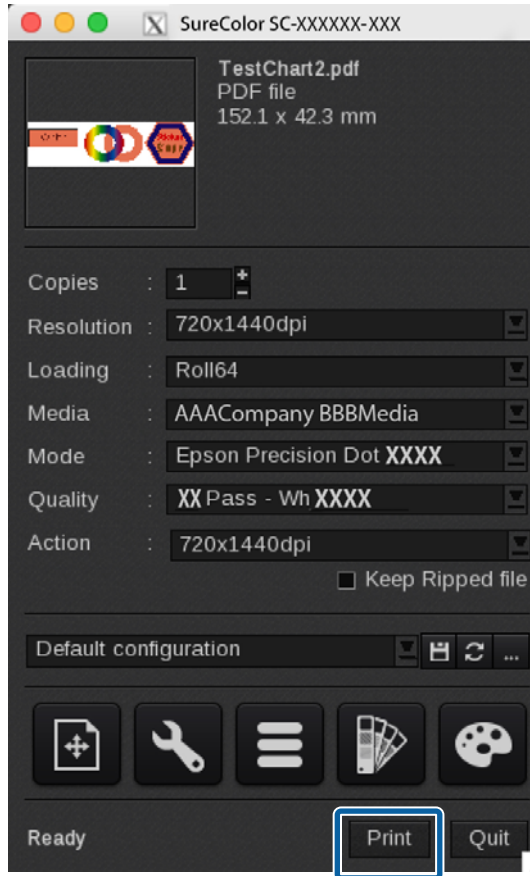
6 On the Dashboard, check whether your printer is ready to print.
If the status is anything other than Ready, check the details on the **Home** screen and do the necessary measures.

7 In the **Main** tab, click your printer.



Print Operations

- 8 Click **Print** in the printer dialog box.



Hot Folder Printing

Important:

Do not do other operations with the RIP if you are doing hot folder printing. If you do RIP processing, etc., at the same time, printing may be interrupted.

- 1 Correctly load the media into the printer.
See *Operator's Guide* (booklet/online manual) for the procedure for loading media.

- 2 Start Caldera RIP.



- 3 On the Dashboard, check whether your printer is ready to print.
If the status is anything other than Ready, check the details on the **Home** screen and do the necessary measures.


- 4 Drag and drop the print data to the hot folder (or the Alias).

Print Operations

Canceling Printing

Generally, software RIP executes printing while spooling the data to the computer and printer. Therefore, even if printing is canceled on either the computer or the printer, the data remaining on the other side continues to print.

If you are canceling printing completely, use the following steps to cancel both sides of the data spooled to the computer and printer.

- 1 Press the  button on the printer's control panel.
The printing is paused.
- 2 Cancel the job being printed with the RIP and hold all the successive jobs.
See the manual for the RIP that you are using for more details on the settings.

When sending data from the RIP to the printer is complete

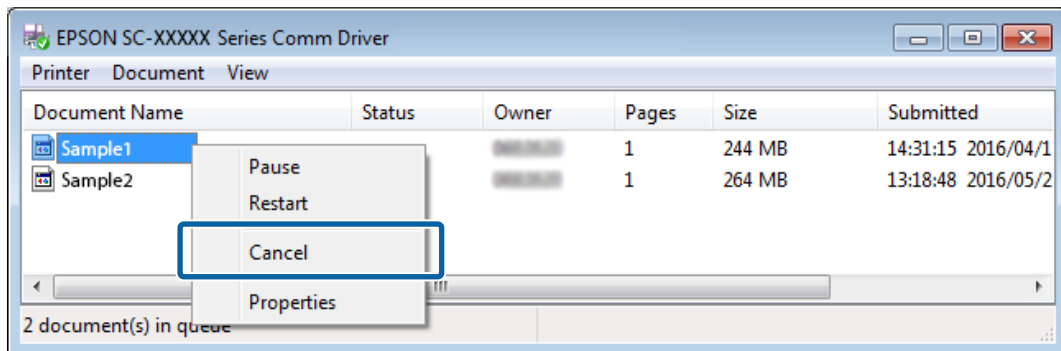
Printing cannot be cancelled from the RIP. Proceed to step 3 to cancel printing on the printer.

When the data size for the job is large (Windows only)

In Windows (especially when connected via USB), jobs may also be spooled to the communication driver.

See the following steps to check the status of the communication driver and cancel the job that is being spooled.

- (1) Click in the order of **Start - Devices and Printers**.
- (2) Click the icon for your printer.
- (3) Right click on the job that you want to cancel printing. Click **Cancel**. If the job that you want to cancel is not on the list, the data has been sent to the printer. Proceed to step 3 to cancel printing on the printer.



Note:

By doing the following settings, print data is sent directly to the printer without being spooled to the communication driver.

 [“The Estimated Print Time Does Not Match \(Windows Only\)” on page 34](#)

Print Operations

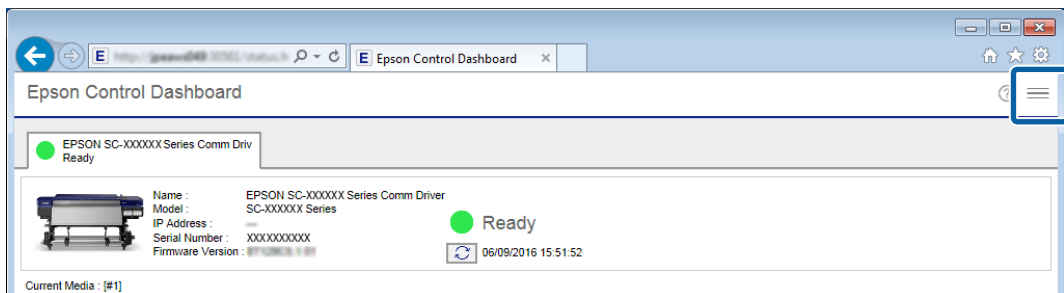
- 3 On the printer's control panel screen, select **Job Cancel** and press the **OK** button.
The job that is being printed is canceled. It may take some time before you are able to print again after a job has been canceled.

Troubleshooting

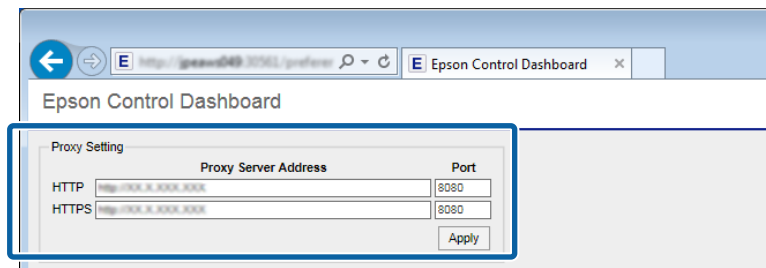
EMX Files Cannot Be Downloaded on the Dashboard

See the following if a message is displayed when you click **Download** and you cannot download EMX files.

- 1 Select **Preferences** in ≡ (menu) on the Dashboard.



- 2 Check whether the **Proxy Setting** is correct.
Check with the network administrator for details on proxy settings.



If you have changed the settings, restart your computer.

Failed to Register the Media Setting Values/Failed to Import Print Information

Check the following.

Were the media setting values from the EMX files on the Dashboard registered to the printer?

Print information is not automatically imported to the RIP just by downloading the EMX files on the Dashboard. If you are importing print information to the RIP, first register the values of the media settings to the printer.

[🔗 “Registering the Media Setting Values to the Printer” on page 11](#)

Did you write the values of the media settings to the printer while the RIP was running?

If you are registering values of the media settings to the printer, quit the RIP until completing the registration and restart it again. Because RIP cannot automatically import print information without acquiring the information for the media setting values of the printer, the operation will fail if Dashboard is offline.

Troubleshooting

Are you accessing one printer from multiple computers on which the Dashboard is installed?

The printer may not operate correctly if you install the Dashboard on each of multiple computers, and then register the same printer on all of them. We recommend installing the Dashboard on only one computer if multiple computers are sharing the printer. If you are checking the status and media settings on another computer, use the Dashboard via remote access. You can remotely access the Dashboard by doing the following procedure.

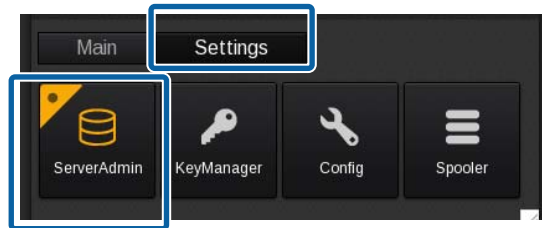
- 1 Start the browser on another computer from which you want to access the Dashboard.
- 2 Input the following in the address bar.
http://(name or IP address of the computer on which you installed the Dashboard):30561

Is your printer added to the RIP correctly?

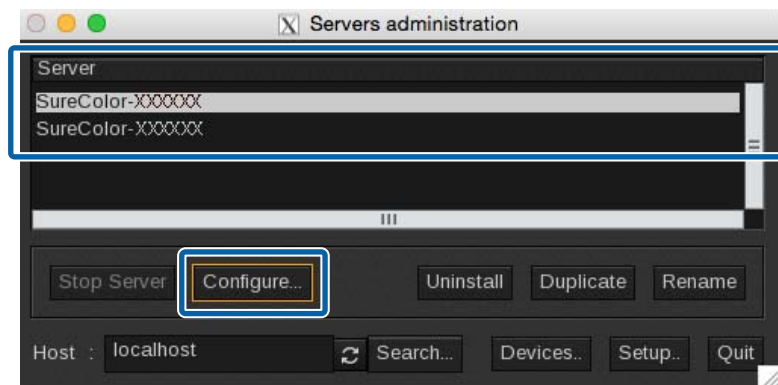
Check the settings for your RIP using the following procedure.

For Caldera RIP

- 1 Start Caldera RIP. In the **Settings** tab, click **ServerAdmin**.



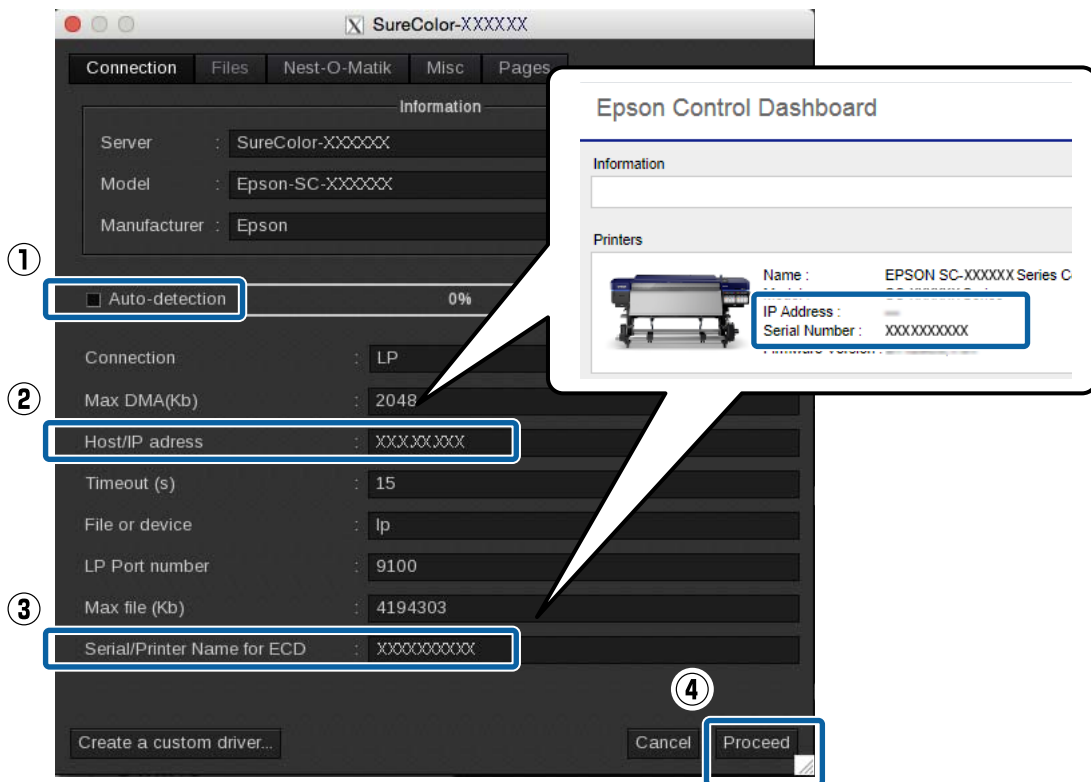
- 2 Select your printer and click **Configure**.



- 3 Clear **Auto Detection**, and then check the following.
 - With network connection:
IP address (2) and Serial Number of the printer (3)
 - With USB connection:
Serial Number of the printer (3)

Troubleshooting

You can check the IP address and Serial Number on the **Home** screen of the Dashboard.



The Estimated Print Time Does Not Match (Windows Only)

If the estimated print time does not match the actual time it takes, do the following settings in the communications driver.

By doing this, the print data is sent directly from the RIP to the printer.

Important:

If you change this setting, the printheads may stop and move while printing, and printing may be interrupted. If printing is interrupted, the colors before and after the interruption may change.

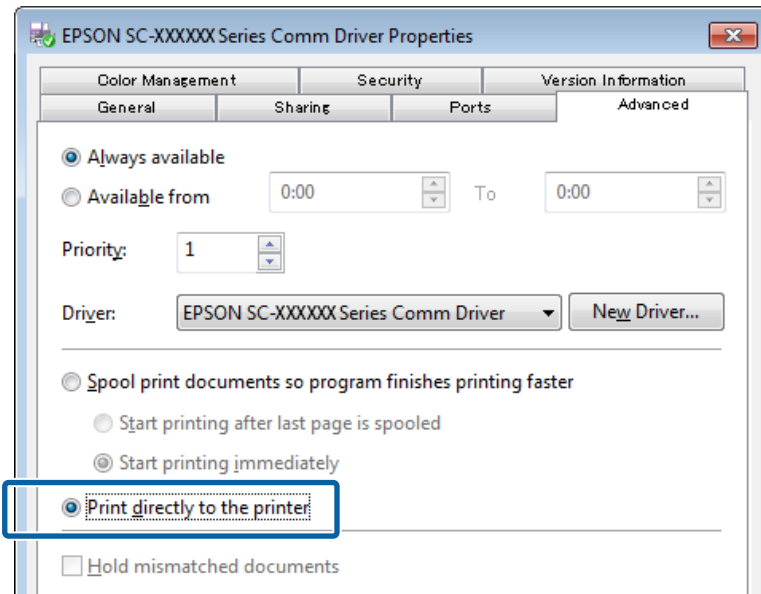
1

Right click the icon for your printer in **Devices and Printers** in the Start menu. Select **Printer Properties**.

Troubleshooting

2

In the **Advanced** tab, select the spooling method **Print directly to the printer**.



Troubleshooting

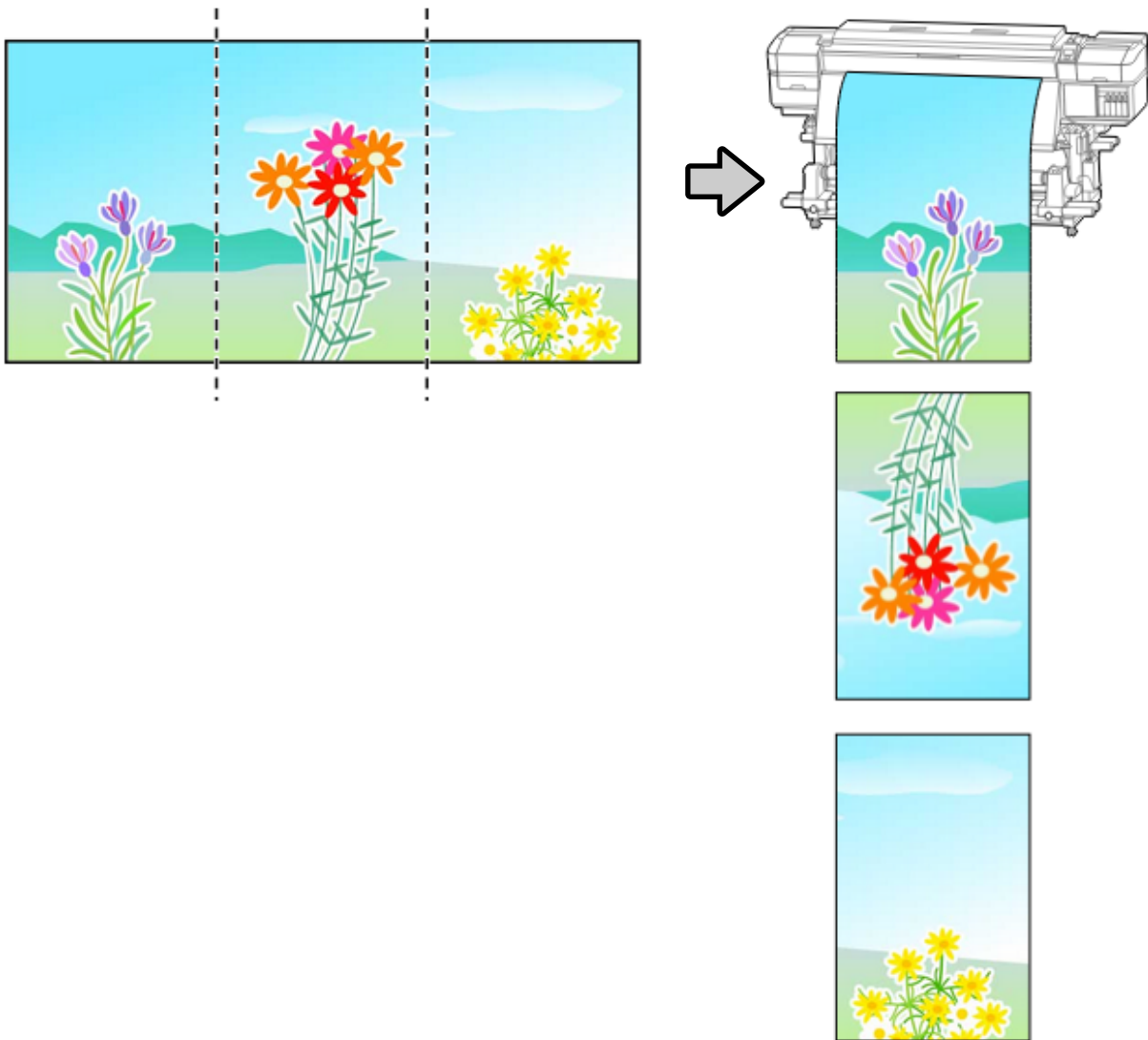
The Seams between Pages Stand Out

If you divide an image into multiple pages, and then print it so that the pages alternatingly flip vertically, as shown, the seams where the pages are joined will not stand out.

Tiled Printing (or Panel Printing)

See the following for the procedure for doing tiled printing with the RIP, from dividing the image to printing it so that they alternatingly flip vertically.

Caldera RIP  [“For Caldera RIP” on page 37](#)




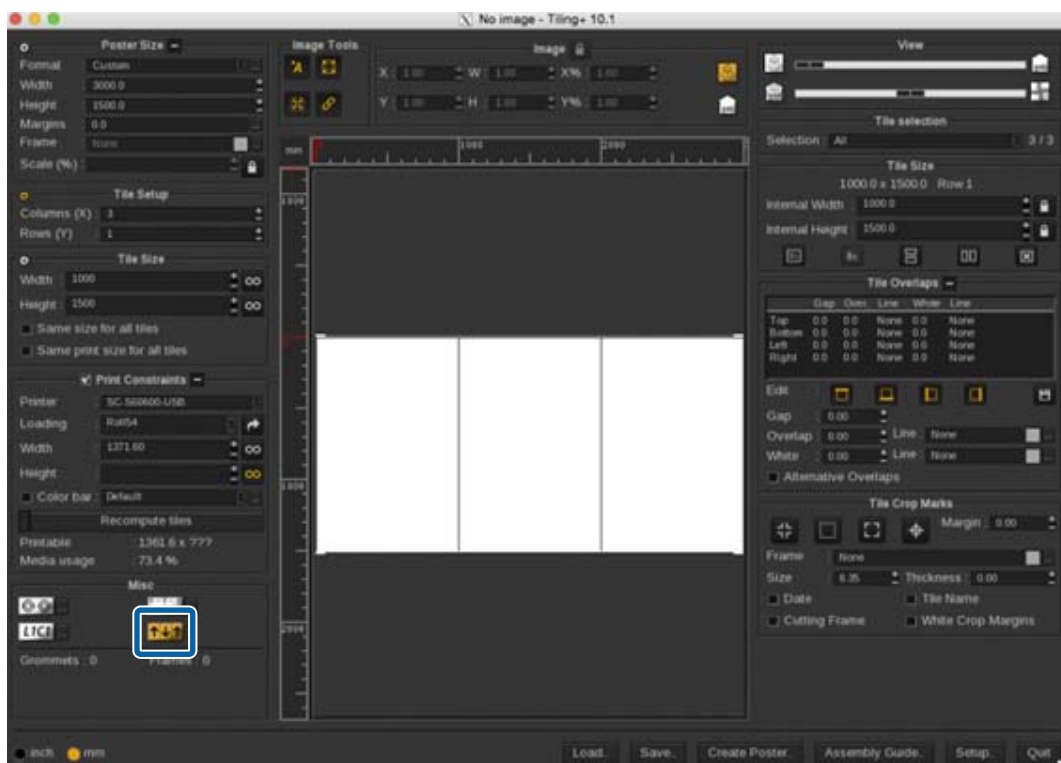
Troubleshooting

For Caldera RIP

- 1 Click **Tiling+** in the **Main** tab of Caldera RIP.



- 2 Click  in **Misc**.
See the manual for the RIP for details of various settings.



Once you have finished doing the settings, select the Configuration and start printing.

Matching the Print Results to the Displayed Color of Print Data

You need to match the settings of an image processing software (Adobe Photoshop, Adobe Illustrator, etc.) to those of the RIP profile to print the print data in the colors you expect. Do the setting with a method, according to your purpose, from below.

Note:

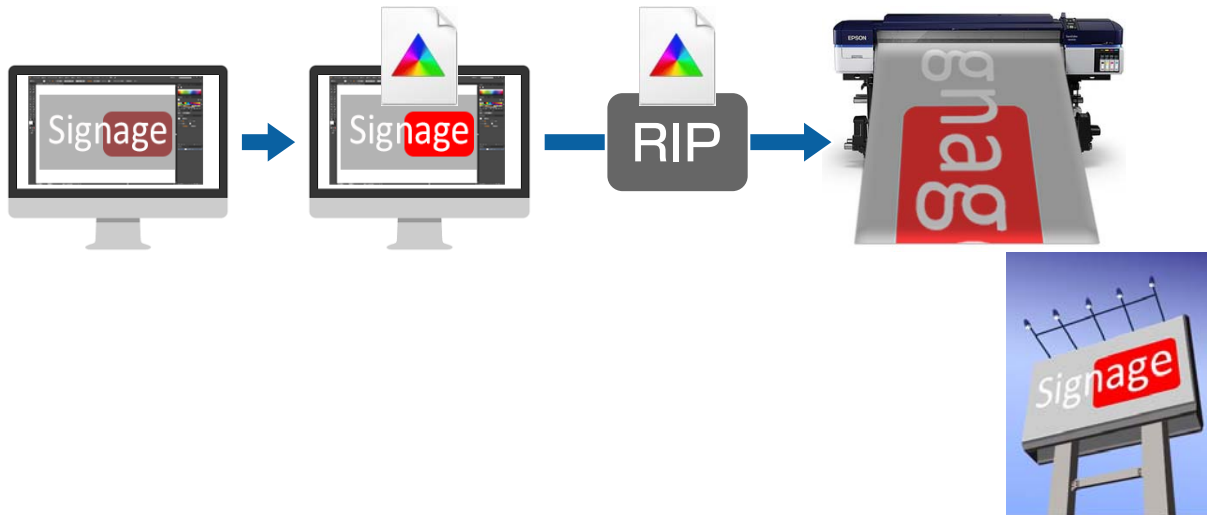
We recommend doing monitor matching (color management for the screen) for the print color to be as close as possible to the colors displayed on the computer screen. See the manuals for your computer and monitor for details.

Troubleshooting

Checking the print results with a wide color gamut profile in advance on the screen

You can print in a wider color gamut than typical print colors by using the wide color gamut profile (EpsonWideCMYK_Ver2.icc) that Epson provides. We recommend these when you want to do brightly colored printing, such as for signs. Do the following settings to check the print results before printing.

 [“Checking the Print Results with a Wide Color Gamut Profile in Advance on the Screen” on page 38](#)



Matching your print results to the display colors in the image processing software

If you want to print the display colors that you adjusted with the image processing software as they are, or if you are printing profile-embedded data, use the following procedure to unify the input color settings for the RIP and the settings for the image processing software.

 [“Matching Your Print Results to the Display Colors in the Image Processing Software” on page 40](#)



Checking the Print Results with a Wide Color Gamut Profile in Advance on the Screen

In this section we explain how to change the preview display colors for the print data without changing the settings for Working Spaces to check the print results. The examples used in following explanation are when using Adobe Illustrator CC(2015) in Windows 7.

Note:

When selecting the input profile you want in step 4, you can also check the print results if you have set the profile in the RIP you are using to something other than EpsonWideCMYK_Ver2.

Troubleshooting

- 1 Right click the Epson special profile for wide color gamut printing (EpsonWideCMYK_Ver2.icc) that is in the following folder. Select **install**.

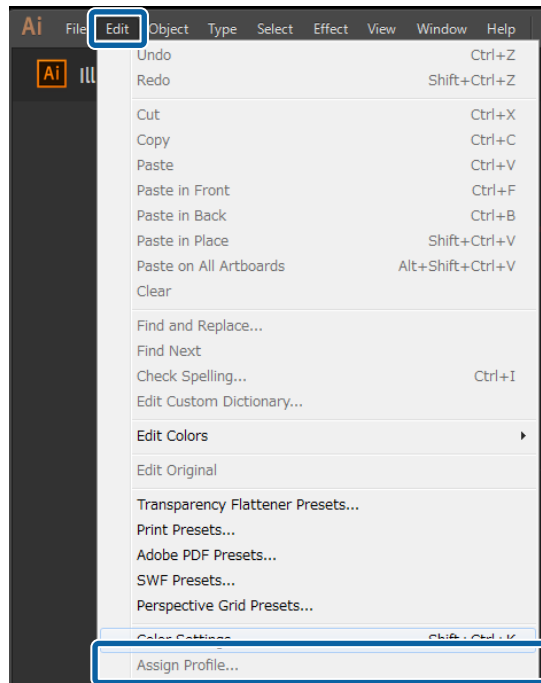
%PUBLIC%\Documents\Epson\Control Dashboard\Profile

Note:

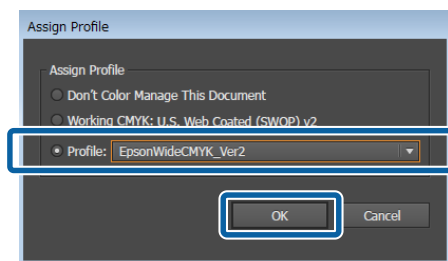
- ❑ If you cannot find the folder, search for the "EpsonWideCMYK" profile.
- ❑ On Mac OS X, copy EpsonWideCMYK_Ver2.icc to the following folder.
Source: Library - Caches - Epson - Epson Control Dashboard - Profile
Target: Library - ColorSync - Profile

- 2 Start Adobe Illustrator and open the print data.

- 3 Click in the order of **Edit - Assign Profile**.



- 4 Select **EpsonWideCMYK_Ver2.icc** in **Profile**, and then click **OK**.



This update is applied to the display colors in the preview. We recommend closing Adobe Illustrator without saving the print data after you are done checking. If you save the changes, the color input settings for the print data change.

Troubleshooting

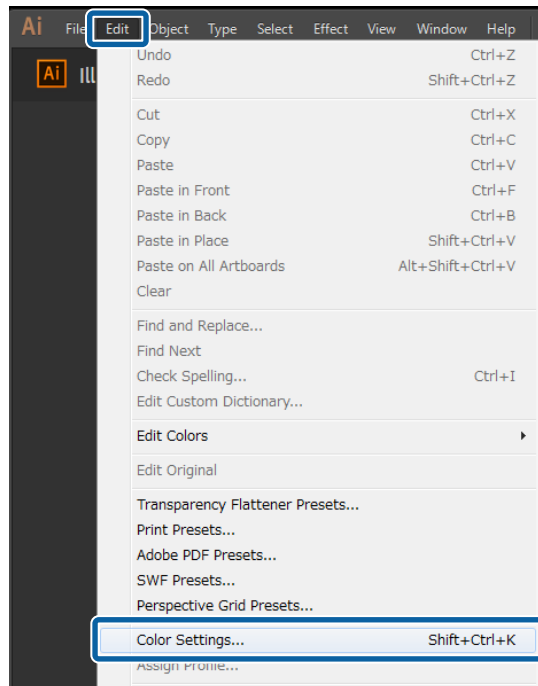
Matching Your Print Results to the Display Colors in the Image Processing Software

Use the follow procedure to check the display colors of the image processing software and to unify the input color settings for the RIP.

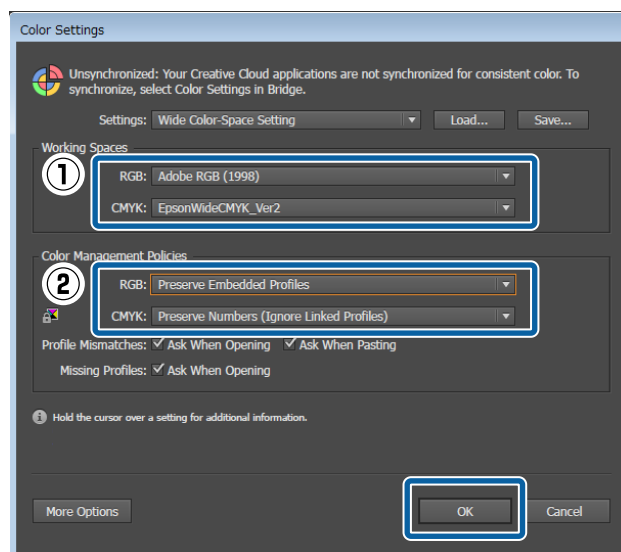
How to Check the Settings in Image Processing Software

In this section, the examples used in our explanation are when using Adobe Illustrator CC(2015) in Windows 7.

- 1 Start Adobe Illustrator. Click in the order of **Edit - Color Settings**.



- 2 Check the setting for both RGB and CMYK in (1) and (2), and then click **OK**.



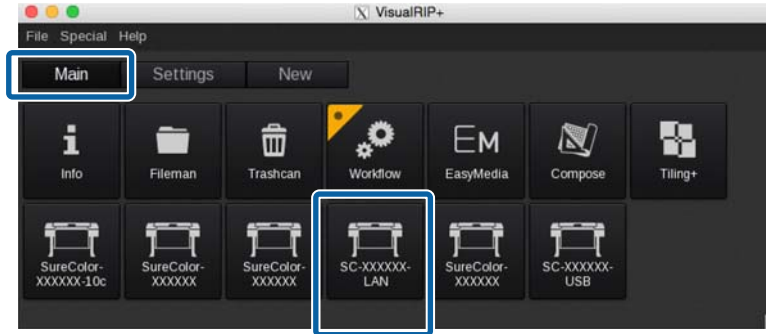
Troubleshooting


How to Change the Input Color Settings of the RIP

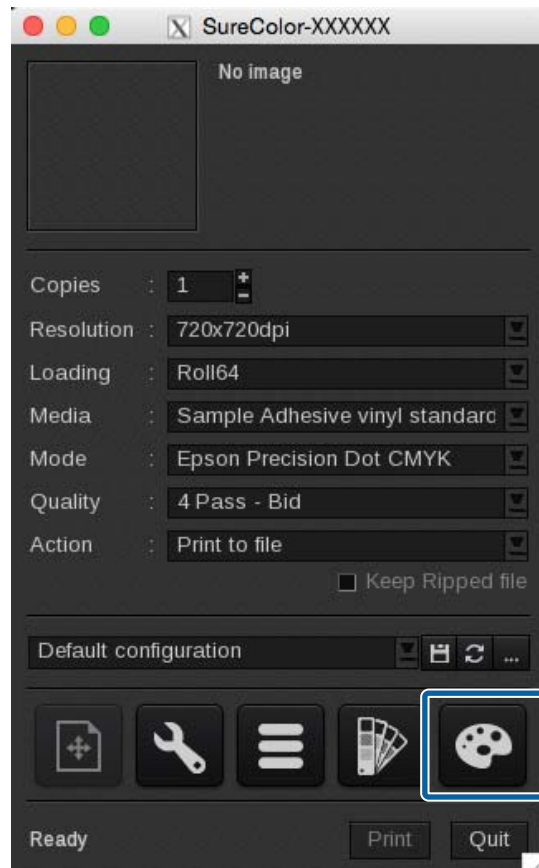
For Caldera RIP

Change the input color settings for your RIP using the following procedure.

- 1 Start Caldera RIP. Click the printer you want to use in the **Main** tab.



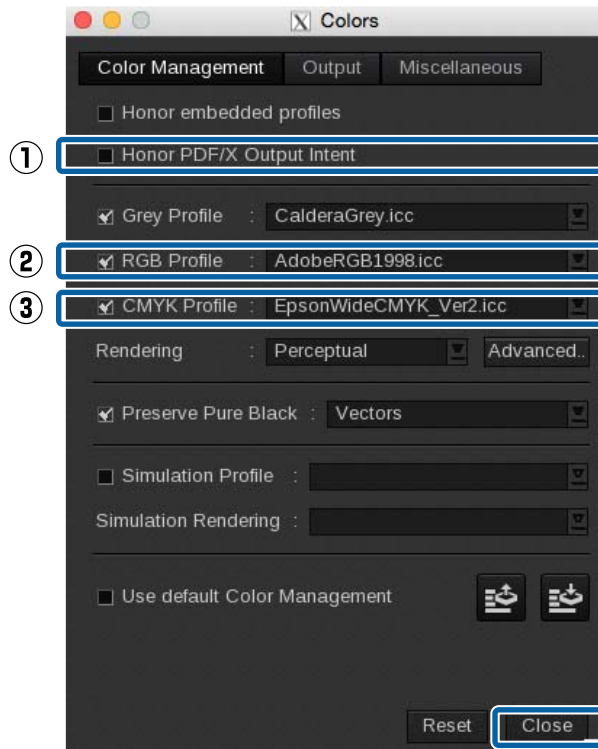
- 2 Click  (**Colors**) in the printer dialog box.



Troubleshooting

3

See the following tables when setting (1) through (3) in the **Color Management** tab. Click **Close**.



| | |
|-----|---|
| (1) | Select this only when Preserve Embedded Profiles is selected in Color Management Policies . |
| (2) | Select the profile * that is selected in RGB in Working Spaces . |
| (3) | Select the profile * that is selected in CMYK in Working Spaces . |

* If the profile you want to use does not appear in the selection menu, copy it from the following folder to the input color folder in the **profiles** folder for Caldera RIP.

Source: **Library - Colorsync - Profile**

Target: **opt - caldera - lib - ICC_PROFILES**

Matching the Colors to Color Swatch Books and Samples

Matching specific color, such as spot colors (PANTONE, DIC Color, etc.) and corporate colors, using the RIP. See the supplemental manual, *Printing with WH/MS, Matching Specific Colors* (PDF), for details.